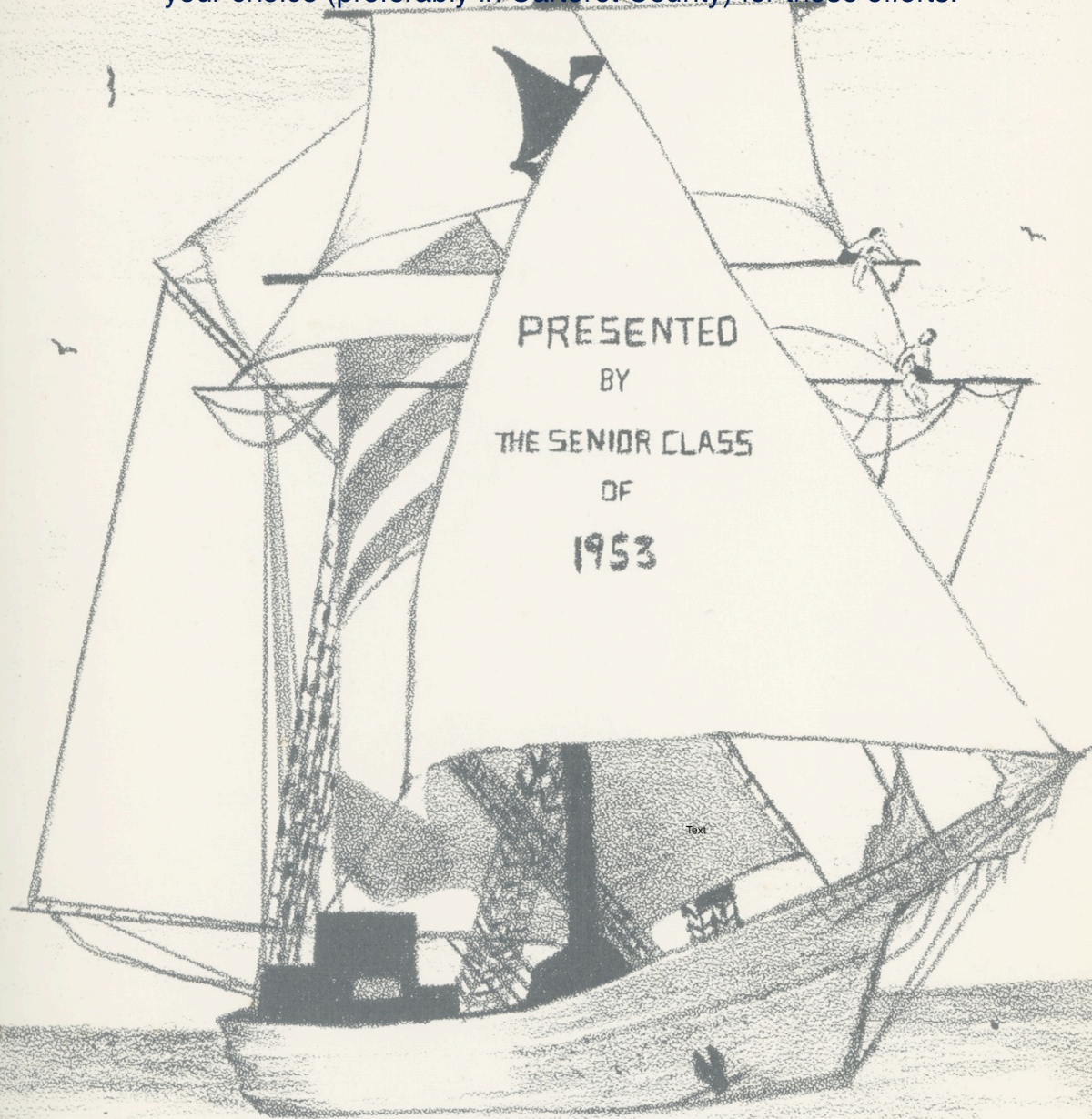




The

Mainsail 1953

Prepared for display by Shannon Adams. Please consider donating to the Core Sound Waterfowl Museum, Carteret County Historical Society, Promise Land Society or charity of your choice (preferably in Carteret County) for these efforts.



PRESENTED
BY
THE SENIOR CLASS
OF
1953

The Mainsail

Craven Branch - Carteret
Regional Library

Dedication

We, the graduating class of 1953, dedicate this,
our annual, to our principal, Bruce E. Tarkington.
Although he has been with us only a short while, he
has already proved to be a dear friend and advisor.

He has given us a greater pride in our school
and we feel that, in future years, we will be able
to claim it without hesitation; knowing, that under
his leadership, it is still the same fine school we
knew and loved.

Principal's Message

I am thankful for this opportunity to express to the patrons, students and faculty of Beaufort Graded School my sincere thanks for making my first year as your principal such a memorable one.

To the class of '53, who have served their school so faithfully through the years, my charge to you is to continue your habit of service. Our nation's success depends on you and the many other graduates who are leaving our public schools this year. You have the opportunity to bring even greater glory to your school now by the contributions you make to your fellow man.

Remember "it's not the gale, but the set of the sail that determines the way we go". Set your course in life on worthwhile objectives so that we can point with pride and say, "Well done, Graduate of Beaufort High".





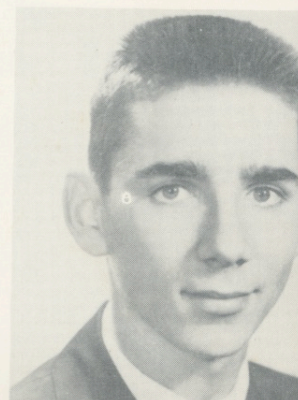
Annual Staff

Johnny Betts, Ted Spivey, Lou Ann Mason, Wilma Woodard, Carol Jones, Patsy Sadler, Bitsy Brooks, Andy Mason, Edwin Becton, Margaret Bryant, Kay Lewis, Phyllis Piner, Minnie Pake, Corrinne Scurlock, Elizabeth Woodard, Joan Chipman, Nellie Ward, Barbara McKay, Gordon Davis, Frank Gillikin, Fay Merrell; Ann Noe and Jean Taylor not shown.

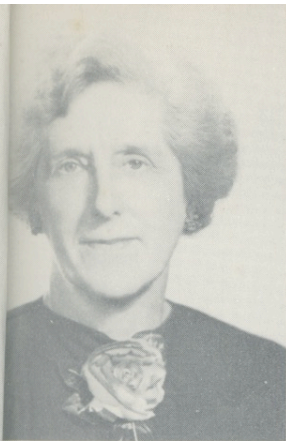
Editor-in-Chief - - - - - BITSY BROOKS
 Business Manager - - - - - TED SPIVEY
 Associate Editor - - - - - ANN NOE
 Associate Business Manager - - - - - JOHNNY BETTS



Editor-in-Chief
BITSY BROOKS



Business Manager
TED SPIVEY



MISS LENA N. DUNCAN



MISS GLADYS CHADWICK



MRS. ANNE SALTER



MRS. BARBARA WILLIS

Faculty

MRS. GRACE FODRIE
(Not shown)

Craven - Pamlico - Carteret
Regional Library



MRS. GERALDINE BEVERIDGE



MRS. MILDRED LAWRENCE

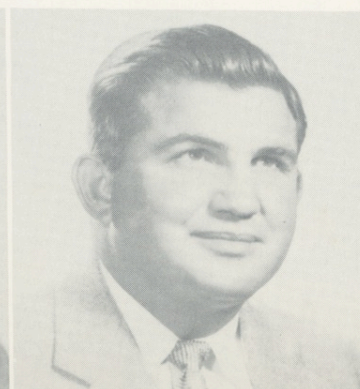
MRS. MARY SUE NOE



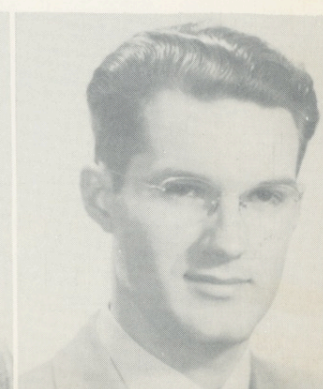
MR. T. H. McQUAID

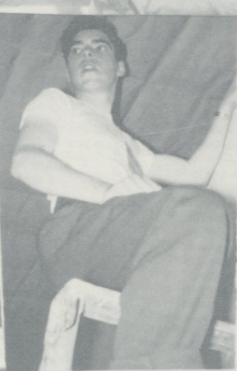
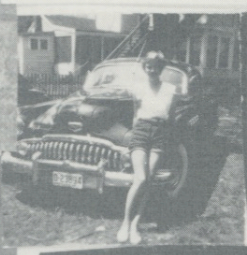


MR. JOHN EVANS



MR. C. FRANKLIN JONES





S

E

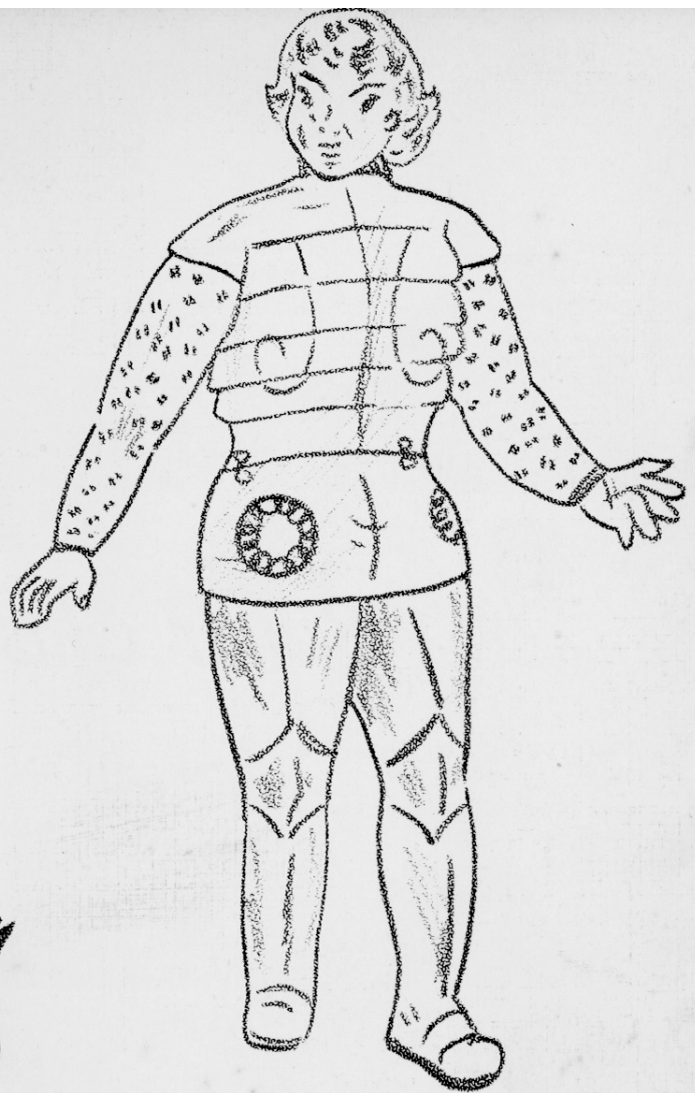
N

I

G

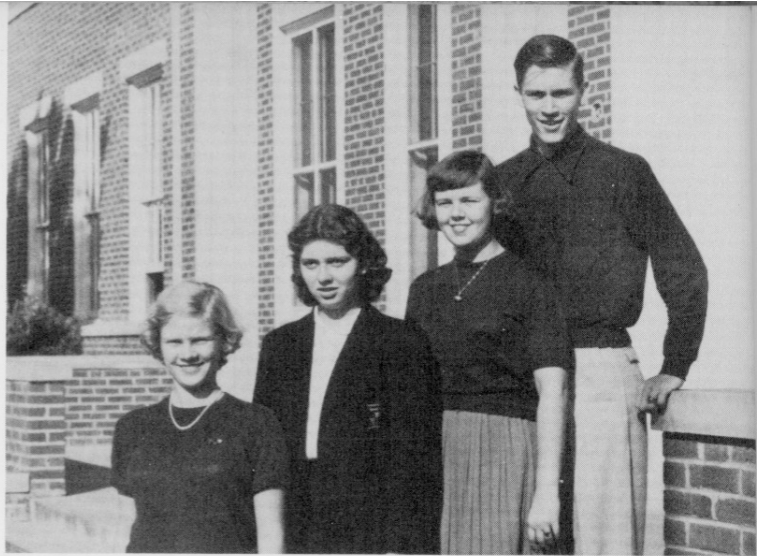
R

S



OFFICERS

President - - - - - GORDON DAVIS
 Vice-President - - - - - ANN OWENS
 Secretary - - - - - BEULAH EUBANKS
 Treasurer - - - - - ELIZABETH WOODARD



Senior Class Officers

CLASS FLOWER: Forget-me-Nots

CLASS COLORS: Green and White

Class Poem

THE FUTURE

We can never return to this port again,
 But still we set sail with untroubled mind
 And we shall sail through wave and rain
 Never worrying, "What shall we find?"

We shall not fear though storm winds blow,
 For someone taught us long ago
 "It's not the gale, but the set of the sail
 That determines the way we shall go."

By - - - Joan Chipman



SUSAN TAYLOR



DANNY ROSA

Mascots

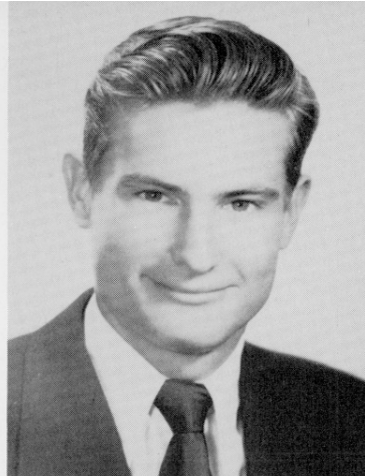
EDWIN LEE BECTON

Band 1, 2, 3, 4; Award 2; Annual Staff 4; Junior Varsity Basketball 1; Glee Club 3, 4; Librarian 3; Glee Club President 4; Beta Club 3, 4.

PATSY ANN BECTON

"Pat"

FHA 1, 2; Historian 2; State Representative 2; Beta Club 3, 4; Newspaper Staff 3.



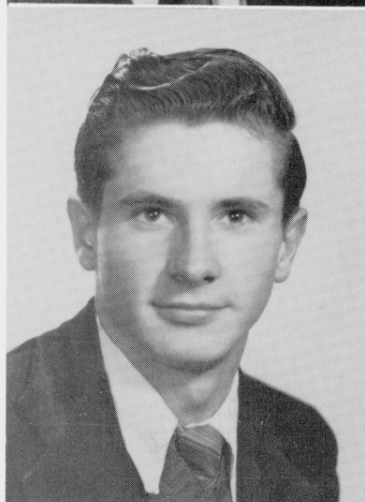
CARL GRIFFIN BELL

4-H Club 1; Senior Superlatives - Cutest; Most Bashful.

GERALD CLYDE BELL

"Jack"

4-H Club 1, 2, 3; Senior Superlatives - Wittiest.



JOHN PORTER BETTS

"Johnny"

Football Manager 3; Basketball Manager 3; Varsity Club 4; Annual Staff 4.

SARA PARKIN BROOKS

"Bitsy"

FHA 1, 2; Songleader 2; Library Assistant 2; Tri-Hi-Y 2, 3, 4; Program Chairman 4; Beta Club 3, 4; Vice-President 4; Paper Staff 3; Sports Editor 3; Band 1, 2, 3, 4; Treasurer 3; Annual Staff, Editor-in-Chief 4; Banquet Waitress 1; Varsity Club 4; Senior Superlatives, Most Talented, Most Outstanding.



MARGARET ELIZABETH BRYANT

"Peggy"

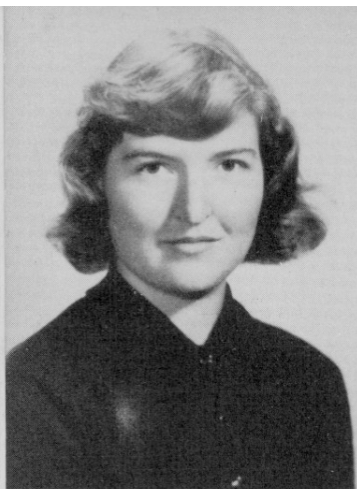
FHA 1; Beta Club 3, 4; Glee Club 2, 4; Newspaper Staff 1, 3; Art Editor; Annual Staff 4; Senior Superlatives - Most Dependable.

VERNA ANNE CARRAWAY

"Reba"

FHA 1, 2; 4-H Club 1, 3, 4.

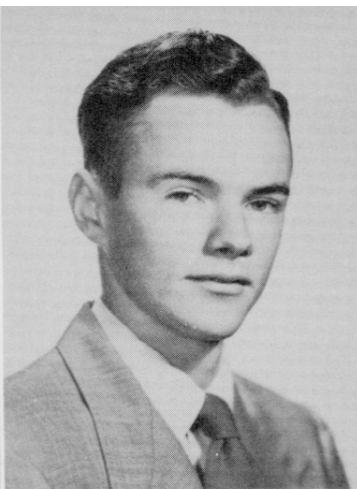




JOAN PIERCE CHIPMAN

"Chipmunk"

Glee Club 3, 4; Newspaper Staff 3; Annual Staff 3, 4; Beta Club 3, 4; Convention 3; Senior Superlatives, Most-Likely-To-Succeed.



FERNIE ROY CLEMMONS

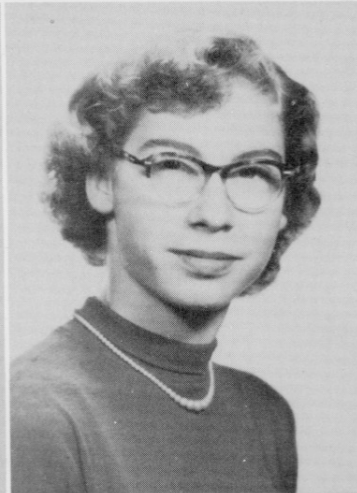
"Roy"

Football Manager 4; Varsity Club 4.



WALLACE JACKSON CONNOR

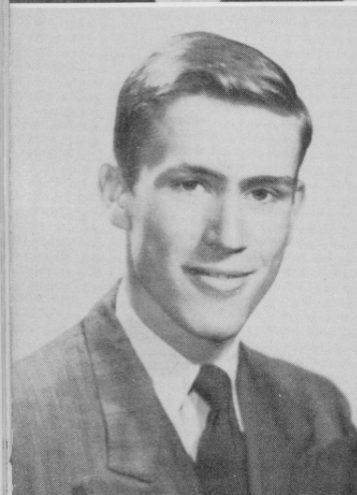
Football 2, 3, 4; Co-Captain 4; 4-H Club 2; Varsity Club 3, 4; Bus Driver 1, 2, 3; Safe Driver Award 3; Senior Superlatives, Best Sport, Biggest Eater.



THELMA LOUISE DARLING

"Tea Pot"

Glee Club 1, 4; FHA 1, 2.



GORDON MORRIS DAVIS

"Sonny"

Beta Club 3, 4; Convention 3; President 4; Junior Varsity Basketball 1; Football 3, 4; Varsity Club 3, 4; Newspaper Staff 1, 3; Student Council 2, 3, 4; Secretary 2; Vice-President 3; Boys State Alternate Class President 3, 4; Banquet Waiter 1; Senior Superlatives, Best-All-Around, Best Citizen, Most-Likely-To-Succeed, Most Dependable, Most Outstanding.



NELLIE WARD DeMOLE

"Shorty"

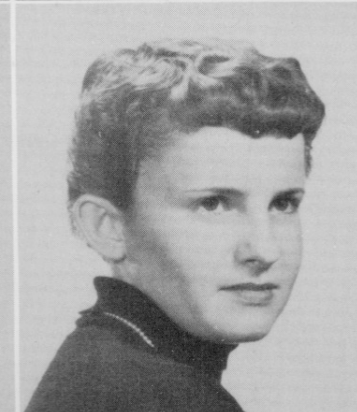
FHA 1, 2; Annual Staff 4.



RUTH JACQUELINE DICKINSON

"Jackie"

FHA 1; Tri-Hi-Y 4; Varsity Club 4; Treasurer 4; Basketball 1, 2, 3, 4; Senior Superlatives, Biggest Eater; Banquet Waitress.



PEGGY JEAN DIXON

4-H Club 1, 2; FHA 1, 2; Basketball 1, 2, 3; Senior Superlatives; Cutest.

ELEANOR CHRISTINE DUNN

"Chris"

FHA 1, 2, 3; Senior Superlatives, Neatest.

BEULAH LEE EUBANKS

"Root"

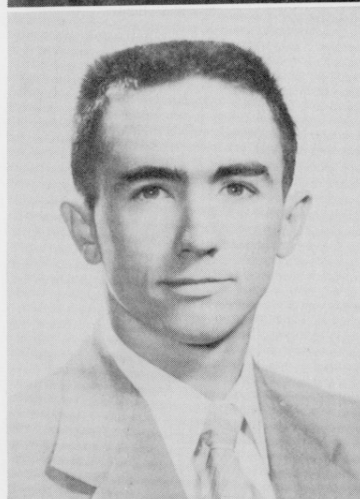
FHA 1, 2; Beta Club 3, 4; Tri-Hi-Y 4; Newspaper Staff 3; Class Treasurer 2, 3; Secretary 4; Chief Marshall 3; Senior Superlatives, Best Personality.



WILLIAM HOWARD EUDY

"Billy"

Basketball 1, 2, 3, 4; Co-Captain 4; Beta Club 3, 4; Football 1, 2, 3, 4; Co-Captain 4; Head Waiter Banquet 2; Baseball 1, 2, 3, 4; Student Council 1, 3; Senior Superlatives, Most Popular, Most Athletic; Varsity Club 2, 3, 4.



CHARLES AYERS FARLOW

"Gus"

Basketball 1, 2; Football 2, 3, 4; Varsity Club 4; Boys' State Representative 3; Student Council 4; President 4; Senior Superlatives, Friendliest, Best Personality.



FRANK STERLING GILLIKIN

Junior Varsity Basketball 1; Basketball 2, 3, 4; Varsity Club 4; Vice-President 4; Student Council 2; Glee Club 1, 2; Beta Club 3, 4; Annual Staff 4; Senior Superlatives, Neatest; Banquet Waiter.

VIRGINIA LEE HILL

"Ginnie"

FHA 1, 2, 4; Glee Club 3.



MARGARET MIMMS HOPKINS

"Molly"

Basketball 1; Banquet Waitress 1; Stunt Majorette 1, 2; Majorette 3; Tri-Hi-Y 2, 3, 4; Cheerleader 4; Varsity Club 4; FHA 1; Glee Club 2, 3; Senior Superlatives, Most Talkative.

CAROL ELIZABETH JONES

"Sally Belle"

Band 1, 2, 3; Tri-Hi-Y 3, 4; President 4; Basketball 1, 2, 3, 4; Co-Captain 4; All Tournament 3; Varsity Club 3, 4; Annual Staff 4; Student Council 2, 4; Tri-Hi-Y Congress 3; Senior Superlatives, Best All Around, Most Athletic.



JULIA BELL KELLY

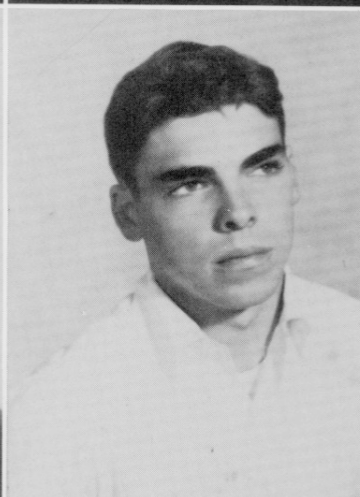
"Julie"

FHA 1, 2; State Representative 2; Glee Club 2, 3, 4.

CATHERINE GENEVIEVE LEWIS

"Kay"

FHA 1, 2; 4-H Club 2; Basketball 3, 4; Glee Club 2; Senior Superlatives, Prettiest, Best Figure.



WILLIAM BRYAN LONGEST

"Brother"

Junior Varsity Basketball 2, 3; Football Manager 3, 4; Baseball 3; Varsity Club 4.

MICHAEL ANDERSON MASON, JR.

"Andy"

Beta Club 3, 4; Annual Staff 3, 4; Student Council 1, 3; Junior Varsity Basketball 1; Football 2, 3, 4; Varsity Club 4; Newspaper Staff 2, 3; Band 1, 2, 3; 4-H Club 1, 2; Marshall 1, 2, 3.



LOU ANN MASON

"Lu"

FHA 1, 2; Annual Staff 4; Senior Superlatives, Prettiest Hair.

BARBARA GOODWIN MCKAY

"Bo"

FHA 1, 2; Reporter 2; Tri-Hi-Y 3, 4; Beta Club 3, 4; Treasurer 4; Annual Staff 4; Class Vice-President 3; Basketball 3; Senior Superlatives, Most-In-Love, Friendliest.



FAY MARETTE MERRELL

"Marette"

Newspaper Staff 1; Student Council 1; FHA 1, 2; Historian 1; Parliamentarian 2; Beta Club 3, 4; Recreation Chairman 4; 4-H Club 1; Tri-Hi-Y 3, 4; Critic 4; Varsity Club 3, 4; Chereleader 3, 4; Captain 4; Annual Staff 4; Senior Superlatives, Best Dressed; Library Assistant 4; Banquet Waitress.

JOYCE LORAIN MERRILL

"Joy"

FHA 1, 2, 3; Senior Superlatives. Most Bashful.

JIMMIE FRANKLIN MODLIN

"Jimbo"

Junior Varsity Basketball 1; Football 2, 3, 4; Baseball 1, 2, 3, 4; Varsity Club 3, 4; Student Council 4; Senior Superlatives, Best Physique.

ANN PARIS NOE

"Thunder"

FHA 1, 2; Tri-Hi-Y 2, 3, 4; Secretary 3, Convention 3; Beta Club 3, 4; Convention 3; Program Chairman 4; Cheerleader 3, 4; Glee Club 2, 3; Varsity Club 4; Annual Staff 4; Banquet Waitress; Student Council Treasurer 4; Girls' State Representative 3; Library Assistant 4; Senior Superlatives, Best Citizen.

JOHN EARL OLUND

"Johnnie"

Junior Varsity Basketball 1; Football 2, 3, 4; Varsity Club 2, 3, 4; President 4; 4-H Club 2; Substitute Bus Driver 2, 3, 4; Student Council 3, 4; Beta Club 3, 4; Glee Club 3.

BENJAMIN GASKILL O'NEAL

"B. G."

Football 1, 2, 3, 4; Basketball 1, 2, 3, 4; Baseball 1, 2, 3, 4; Varsity Club 2, 3, 4; Glee Club 1, 2, 3; Banquet Waiter; Junior Varsity Basketball 1; All Tournament 3; Senior Superlatives, Most Talented, Best Dancer, Best Dressed.

ANN MODIQUE OWENS

FHA 1; Tri-Hi-Y 3, 4; Treasurer 4; Beta Club 3, 4; Basketball 1, 2, 3; Manager 4; Cheerleader 4; Varsity Club 4; Class Vice-President 4; Newspaper Staff 3; Banquet Waitress; Band 1, 2, 3; Senior Superlatives, Best Dancer, Wittiest, Most Popular.

MINNIE CATHERINE PAKE

"Minky"

FHA 1, 2; Tri-Hi-Y 3, 4; Vice-President 4; Varsity Club 4; Secretary 4; Basketball 1, 2, 3, 4; Co-Captain 4; Annual Staff 4; Student Council 4; Senior Superlatives, Best Sport; Library Assistant 2.

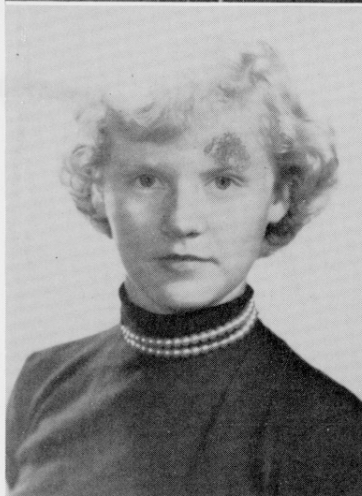
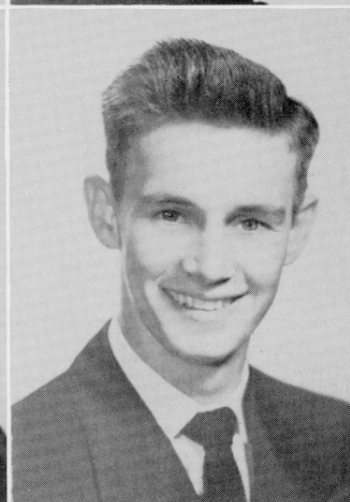
PHYLLIS JEAN PINER

FHA 1, 2; Parliamentarian 2; Tri-Hi-Y 2, 3, 4; Treasurer 3; Beta Club 3, 4; Convention 3; Basketball 3; Varsity Club 4; Cheerleader 4; Annual Staff 4; Banquet Waitress; Senior Superlatives, Prettiest Eyes.

LOLA PEARL PRATT

"Feet"

FHA 1, 2.





RONALD HOOPER QUIDLEY

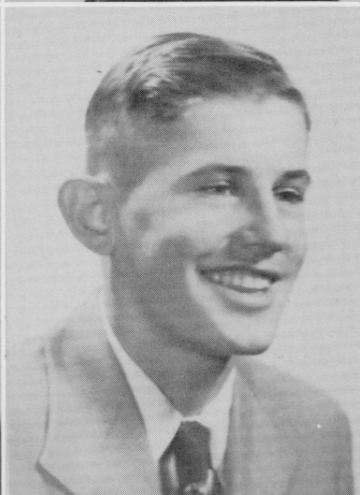
"Ronnie"

Football 3; Varsity Club 4; Senior Superlative
Biggest Firt.

PATRICIA ANN SADLER

"Patsy"

FHA 1, 2; Basketball 1, 4; Majorette 2, 4; New-
paper Staff 3; Annual Staff 4.



VIVIAN CORRINNE SCURLOCK

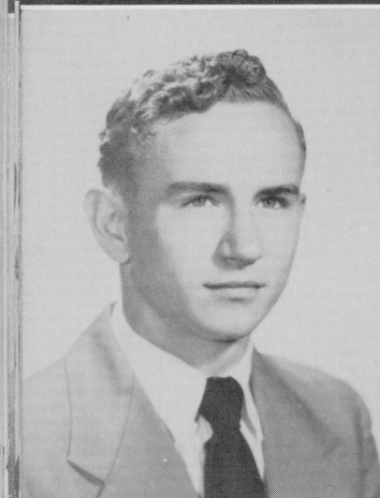
"Corn"

Class Treasurer 1; Secretary 3; FHA 1, 2; News-
paper Staff 1, 2, 3; Beta Club 3, 4; Annual Staff
4; Glee Club 3; Secretary 3; Marshall 1, 2; Li-
brary Assistant 3, 4.

JACKIE ARNOLD SIMPSON

"Smyrna"

Junior Varsity Basketball 1, 2; Baseball 3.



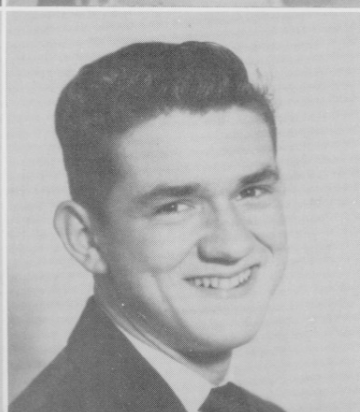
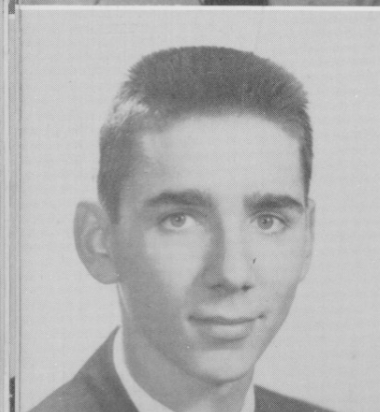
BOBBY WEST SMITH

Glee Club 2, 3; Beta Club 3, 4; Banquet Waiter;
Senior Superlatives, Most Studious.

INEZ GERTRUDE SMITH

"Trip"

FHA 1; 4-H Club 1, 2, 3, 4; Glee Club 1, 2.



GILMORE THEODORE SPIVEY

"Ted"

Band 2, 3, 4; President 4; Beta Club 3, 4; Hall
Patrolman 3; Bus Driver 3, 4; Newspaper Staff
1, 3; Annual Staff, Business Manager 4; Junior
Varsity Basketball 2, 3; Science Club 1; Senior
Superlatives, Most Talkative.

DONALD RAY TAYLOR

"Duck"

Beta Club 3, 4; Varsity Club 3, 4; Football 3, 4;
Senior Superlatives, Best Looking, Prettiest Hair

EVA VICTORIA TAYLOR

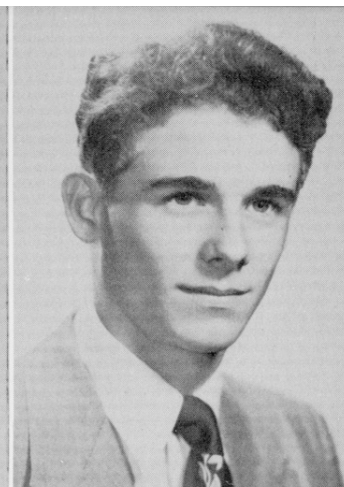
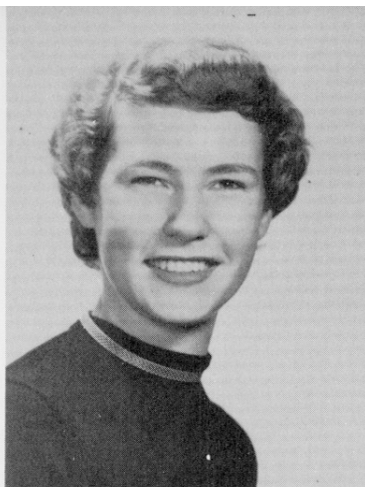
"Vickie"

FHA 1, 2; Basketball 3, 4; Tri-Hi-Y 2, 3, 4; Major-ette 3, 4-H Club 1, 2; Senior Superlatives, Biggest Flirt.

JIMMIE SHELDON TAYLOR

"James"

4-H Club 1, 2, 3; Band 1, 3; Substitute Bus Driver 4.



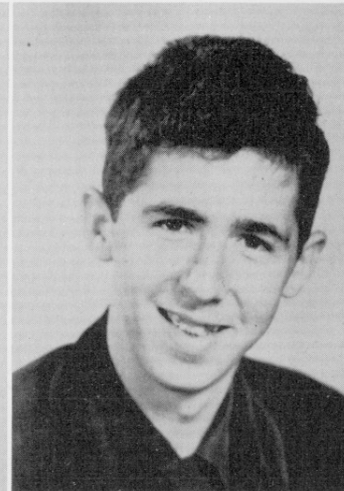
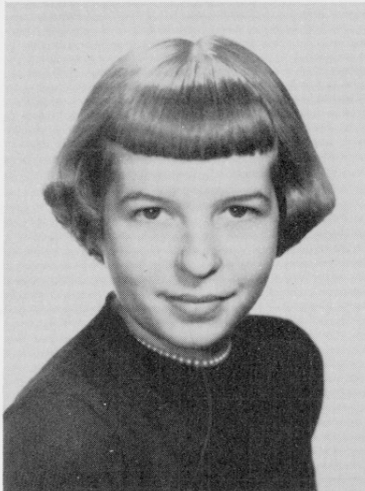
JEAN CAROLE TAYLOR

"Turtle"

FHA 1, 2; Convention 2; 4-H Club 1, 2, 3; Banquet Waitress; Glee Club 2; Class Secretary 2; Paper Staff 3; Girl's State Representative 3; Beta Club 3, 4; Secretary 4; Convention 3; Cheerleader 4; Varsity Club 4.

TERRY BLAINE WHITLEY

4-H Club 1; Basketball 2; Junior Play 3; Senior Play 4; Entered BHS in 1953.



WARDEN LEWIS WOODARD

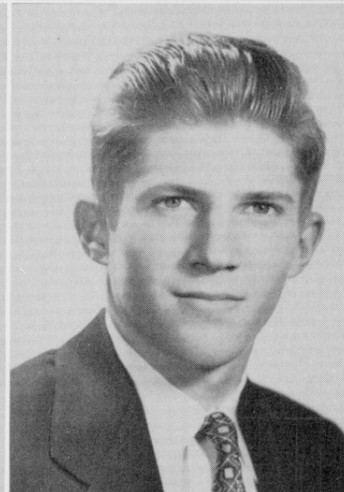
"Moon"

Junior Varsity Basketball 1; Football 2, 3, 4; Baseball 1, 2, 4; Basketball 2, 4; Varsity Club 2, 3, 4; Student Council 4; Class President 1; Newspaper Staff 2; Beta Club 3, 4; Senior Superlatives, Most-In-Love.

ELIZABETH IRENE WOODARD

"Diddy"

Student Council 1, 2, 3; Beta Club 3, 4; FHA 1, 2; President 2; Tri-Hi-Y 4; Annual Staff 4; Class Treasurer 4; Marshall 3; Newspaper Staff 3; Senior Superlatives, Most Studious.

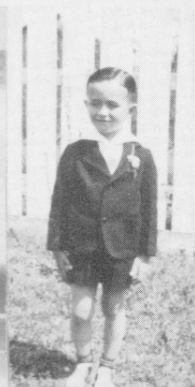
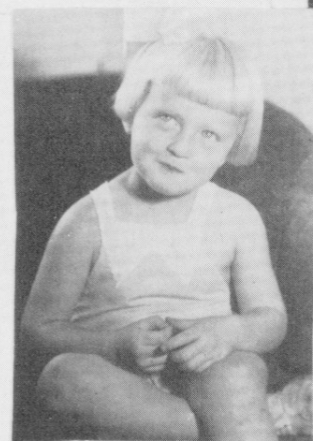


WILMA JEAN CUMMINGS WOODARD

"Bones"

FHA 1; Glee Club 2, 3; Student Council 2; Tri-Hi-Y 4; Newspaper Staff, Associate Editor 3; Class Prophet 4; Beta Club 3, 4; Banquet Waitress; Annual Staff 4; "I Speak for Democracy" Contest Winner 3.





THE

WORLD





Prettiest
Best Looking



Biggest Eaters



Most-In-Love



Best Sports



Best Dressed



Most Talkative



Neatest



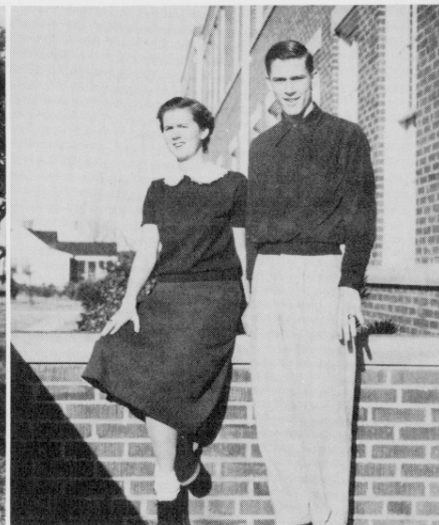
Cutest



Wittiest



Best Personality



Best All-Around



Prettiest Hair



Most Talented



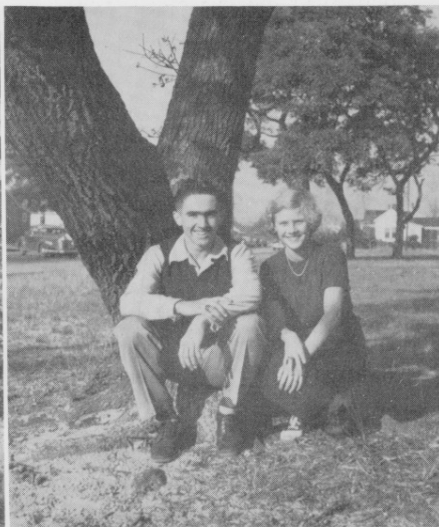
Best Dancers



Prettiest Eyes



Most Likely To Succeed



Most Popular



Best Figure
Best Physique



Most Dependable



Friendliest



Most Outstanding



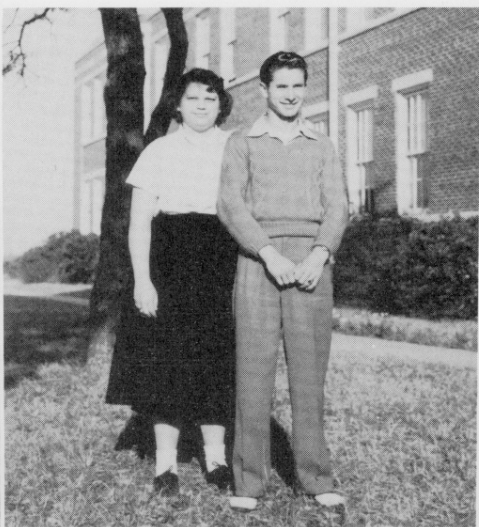
Most Athletic



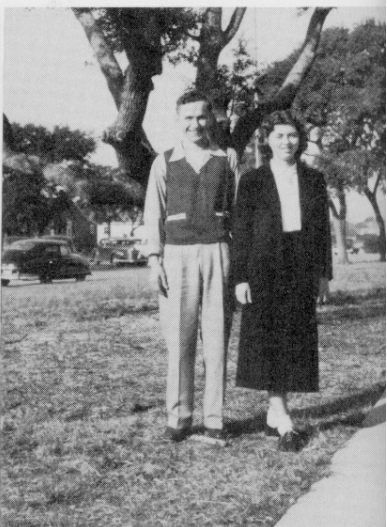
Best Citizens



Best Figure



Best Physique



Best Citizens

Class History

A tree with four limbs started blossoming four short years ago. In '49, our freshman year in high school, the first limb blossomed. During the first week seventy-eight lowly freshmen wandered around the halls going in every room found open in an attempt to work out a required schedule in the room designated for that purpose. During this wandering period the Juniors, Seniors, and even the Sophomores laughed at us for being so green. However, we lived down the teasing of this and finally got down to work. The FHA initiation was the biggest thrill of the year. At the initiation we were required to wear tow bags and aprons, to carry cloths and dolls, and to clean the sidewalks with our toothbrushes. During this first year we participated in sports, FHA, and 4-H Club. We gave the seniors a hayride and wiener roast at the beach. Under the guidance of our homeroom teachers, Mrs. Beveridge and Mrs. Salter, we made our grades.

Now the second limb on the tree has blossomed and seventy-one of us have started back to school. This year we were in the middle-one limb above the lowly freshmen and far below the lofty seniors. Glee Club, FHA and sports were our main interest. At the end of the year a hayride and wiener roast were again given to the seniors. The wind and sand helped in making our supper memorable. We actually ate more sand than food. Miss Collins and Mr. Hawkins, our homeroom teachers, helped us with our party.

A third of the tree had now blossomed and the blooms were getting wiser and more beautiful. The chief topic of conversation from fifty-four of us this year was the Junior-Senior Banquet. We dreamed, talked, and thrilled at the mention of our theme, SNOWLAND PARADISE. Under the guidance of our sponsors, Mrs. Lawrence and Mr. McQuaid, our banquet was all we hoped it would be. We will always cherish memories of the gymnasium with the cold north wind blowing cold air, the penguin's land, the hugh polar bear dominating the scene, the northern lights, and artic scenes on the walls of the gymnasium. Too quickly we were nearing the top branch of our tree with the help of our home room teachers, Mrs. Floyd and Mr. McQuaid.

The tree is in full bloom now, more beautiful and radiant than ever. By now the tree is wise with knowledge of worldly affairs and books. Fifty-two have finally reached our goal. This last part of our voyage is what we have been looking forward to with great anticipation. The Washington trip, Senior Play, annual and graduation are our important topics. This year the leaders of the clubs come from our class. The stars in all sports belong to us. Our privileges are few but very important to us. We feel honored to have the student body stand up on our • entering the auditorium. It is a wonderful feeling to walk in the front door and sit in the balcony. We are looking forward to the entertainment which will be given us because we are Seniors. Our tree has blossomed in all of its glory. Everyone admires it and we sadden at the thought that its blooms will drop at the approach of another senior class.

Historian
Barbara McKay

Last Will and Testament

Article I.

We the Senior Class of 1953, being of weak minds and feeble bodies, after these long twelve years, do hereby leave our seats in the Senior rooms, our Senior privileges, and some of our most cherished possessions to the incoming Senior Class.

Article II.

To Miss Lena Duncan and Miss Gladys Chadwick, our Senior advisors, our many thanks for helping make this our Senior Year, the best ever.

Article III.

Ann Owens leaves her bopping routine to Martha Gibbs. Johnny Betts sorrowfully leaves his love of studying to Gerald Taylor. Jean Taylor leaves her curls to Phyllis Pake. Clyde Bell bequeaths his love of English IV to Jimmy Willis. To Anita Copeland, Barbara McKay leaves that ability to get a man. Shirley Piner inherits Peggy Dixon's petite figure. Vickie Taylor and Ronnie Quidley bequeath their flirtatious ways to Frances Fulcher and Bobby White. Carol Jones and Billy Eudy leave their athletic abilities to Janice Murphy and Johnnie Simpson. Harold Willis inherits Donald Taylor's good looks. (Look out, girls.) Molly Hopkins leaves her talkative ways to Barbara Piner. Ted Spivey leaves his mile-a-minute speech to Joel Cannon. Jackie Dickinson leaves her height to Dorothy Jarman. Virginia Hill leaves her sour pickle to Shelby Laughton. Jimmy Murphy inherits Wallace Connor's place as co-captain on the football team. Corrinne Scurlock leaves her Senior English Themes to Judy Mason. Beulah Eubanks wills her car to Earl Noe. (He surely needs a new one.) Jimmy Potter receives Bobby Smith's conceit. Lola Pratt bequeaths her hopes for a man to Joyce Willis. Patsy Sadler leaves her majorette ability to Etta Taylor. Andy Mason gladly wills his car's rattles to Kerry Lewis. To the Junior Class, Edwin Becton leaves his camera. (They'll need it to take pictures for the annual next year.) Margaret Bryant wills her artistic ability to Janice Keller. Elizabeth Woodard leaves her straight A's to her sister Inez. (Keep up the good work, Inez.) To Street Wetherington, Gus Farlow leaves his personality. Patsy Becton bequeaths her ability to rate a front seat in a Hudson to Fay Mason. Carl Bell wills his manly frame to Herbie Prytherch. Barbara Harris inherits Joan Chipman's scientific mind. Frank Gillikin leaves his neatness to Hugh Mason. Christine Dunn bequeaths her small waist to Jane Robinson. Wilma and Lewis Woodard leave to take care of their young family. Gordon Davis bequeaths his leadership ability to his brother Bobby. Verna Carraway leaves her front seat on bus 20 to Lib Stallings. Lou Ann Mason bequeaths her long curly hair to Helen Lee. Jimmy Wheatly inherits Jimmy Modlin's broad shoulders. Jeanne Jenkins inherits Thelma Darlings' quietness. Julia Kelly wills her "men" to Christine Bratcher. (Julia has plenty to spare.) Joyce Merrill leaves fifty pounds to Geneva Hardesty. To Julia Congleton, Jackie Simpson leaves his aching heart. Minnie Pake's place on the basketball team goes to Emma Perry. Kay Lewis bequeaths her tall good looks to Virginia Davis. To Fred Merrill, B. G. O'Neal leaves his ability to get a wife. Bitsy Brooks leaves her talents to anybody who can use them. Bitsy can spare many! Nellie Ward bequeaths her typing ability to Sylvia Harrell. To newcomers to this school, Ann Edwards leaves the warm welcome she received when she first came. Ann Noe leaves her hair-cut to Patricia Daniels. Roy Clemmons and William Longest leave their managers' place to Bobby Guthrie and Wayne Whitehurst. Inez Smith wills to Mary Chadwick, her place in a blue chevrolet. James Taylor leaves his jokes to Curtis Josey. Phyllis Piner leaves her Muscles to Mr. McQuaid. Fay Merrill leaves her clothes to Sue Gibbs, for she has plenty to spare.

We hereby appoint Albert, our beloved janitor, to be the executor of this will.

In witness of, I, the said testator do set my seal upon this document.

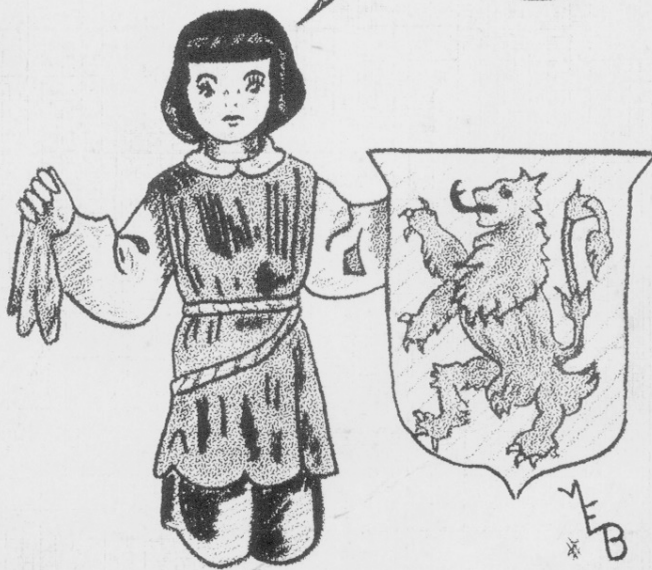
Phyllis Piner
Testator

Prophecy

Since this was my first return to Beaufort after departing for Europe several days after graduation, I was eager to hear some news about my dear classmates of B.H.S. I remembered the local "hangout" in '53 was Guthrie-Jones' Drugstore. Hoping to meet someone I knew, I went there. I found out that Guthrie and Jones had sold out to Carol Jones and Ann Noe. I found Carol not too busy and she passed on to me the news of my former classmates. Corrine Scurlock was teaching dramatics at the new high school at Bogue Sound. Thelma Darling was married to James Taylor and was settled down in the new housing project, designed by Gordon Davis. Gordon, a well known contractor, also had a well known assistant, Bobby Smith. Carol told me that Phyllis Piner and Jean Taylor were heads of a fleet of crabbing boats on Neuse River. Lola Pratt had gone west to seek her fortune, had met up with Jackie Simpson, and together they were running a cucumber farm in Arizona. Billy Eudy was manager of the baseball team at Crab Point. It surprised me to learn that Jimmy Modlin was an evangelist preaching to thousands as he traveled up and down the country, accompanied by Beulah Eubanks, who is his pianist. Frank Gillikin was running the "Carolina Hayride" over WMBL. He also read the funnies on Sunday. Wallace Connor was head football coach at Notre Dame. He took the position after Roy Clemmens resigned to help Andy Mason hunt for gold in the Sahara Desert. Kay Lewis and Vickie Taylor went along to hold the camels while they looked. Ann Owens, Carol informed me, was starring in pictures out in Hollywood, billed as the new Marilyn Monroe. Bitsy Brooks and Ronnie Quidley had become well known as the star trapeze performers in Ringling Brothers Circus. Nellie Ward was also employed with Ringling Brothers as the sword swallower. Margaret Bryant and Christine Dunn were in Paris designing and modeling the latest fashions. Ted Spivey had just accepted the position as warden of Sing-Sing. The prison doctor was Johnny Betts. It was easy to imagine him scampering about here and there, all over Sing-Sing. Barbara McKay had moved to New York City, taking along her set of twins and triplets. Virginia Hill and Joan Garner were missionaries in the dark continent of Africa. Joan Chipman, a noted scientist, went along with them to search for some rare gnats. Lewis Woodard and B. G. O'Neal were playing professional football in their spare time. They kept the children and house while their wives worked. Minnie Pake was a star of the Women Globe Trotters, a professional basketball team. Carol told me that the latest news was that William Longest was collector for the Bureau of Internal Revenue in Raleigh. It was rumored that he was after Clyde Bell for tax evasion. Fay Merrill was secretary to Morehead City's mayor, Johnny Olund. Edwin Becton was busy touring the country with his famed trumpet and singer, Julia Kelly. Molly Hopkins was the new drivers license examiner in Beaufort. Her first act had been to move the parallel parking posts in front of the court house farther apart. Patsy Becton and Verna Carraway were co-owners of the Beaufort Cannery. Patsy Sadler and Jackie Dickinson had married army boys and were busy rushing from camp to camp with their brood of children. Gus Farlow was the chief justice of the Supreme Court in Washington. He had recently handed down several important decisions, Carol informed me. Joyce Merrill was taking pictures everywhere as she had bought out Eubanks and Shumacker. Elizabeth Woodard was head nurse at Morehead City Hospital. She came home with Peggy Dixon on weekends. Peggy worked with the welfare agency there. I really felt wonderful when I left the drugstore and started home. In ten short years, the class of '53 had really come a long way. I felt proud of their accomplishments. Some of the news, however, came as a complete surprise.

Wilma Jean Woodard
Prophet





THE HISTORY OF THE
CRIVEN-PAMLICO-CARTERET
REGIONAL LIBRARY

OFFICERS

President - - - STREET WETHERINGTON
 Vice-President - - - - - BOBBY DAVIS
 Secretary - - - - - JANICE KELLER
 Treasurer - - - - - ANITA COPELAND
 Corresponding Secretary - INEZ WOODARD



Juniors

A JUNIOR SPEAKS

We are now finishing the third quarter of the game. We have played the game with good sportsmanship and a winning spirit. Soon the last quarter will begin and our victory will be assured.

Our team has experienced all the varied phases of the game. Nine of our teammates sing in the Glee Club; four are in the band; four play basketball; eight are in Tri-Hi-Y; and thirteen are in Beta Club.

Our team is busy working on the Junior-Senior Banquet, which we hope will be the best ever. We are working equally hard toward our Senior year. With our splendid advisors, Mrs. Anne Salter and Mrs. Barbara Willis, we are confident of attaining our goals.



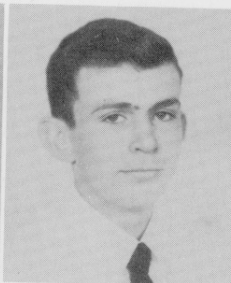
DONALD
AUSTIN



ANITA
COPELAND



PATRICIA
DANIELS



BOBBY
DAVIS



SHIRLEY
DUDLEY



DO
FU



Frances
Fulcher



Colleen
Guthrie



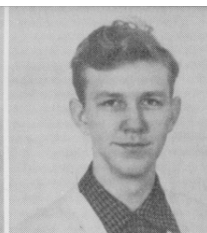
Sue
Gibbs



Sadie
Harris



Barbara
Harris



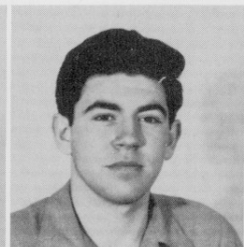
Billy
Hudgins



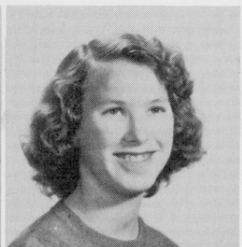
Curtis
Josey



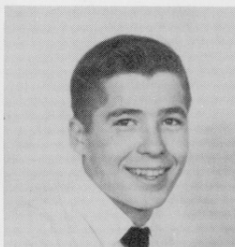
Janice
Keller



Wayne
King



Marie
Lawrence



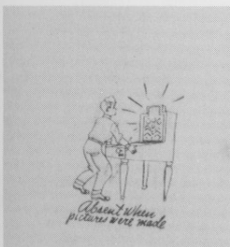
Helen
Lee



Kerry
Lewis



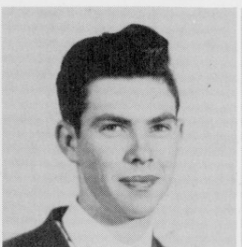
Darlene
Mathews



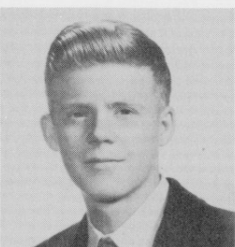
Hugh
Mason



Judy
Mason



Fred
Merrill



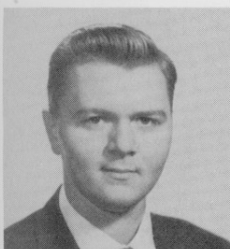
Walker
Moore



Emma
Perry



Phyllis'
Pake



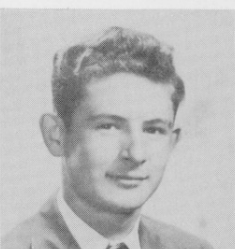
Herbert
Prytherch



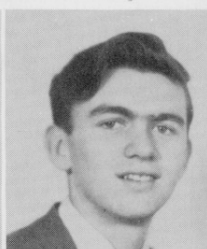
Jane
Robinson



Marie
Robinson



Connie
Sabiston



Malcolm
Sabiston



Gerald
Taylor



Sallie
Taylor



Grace
Withurst



Nancy
Withurst



Joyce
Willis



Kay
Willis



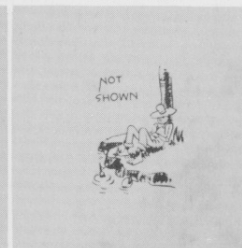
Doris
Temple



Inez
Woodard



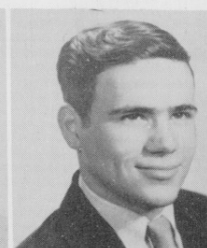
Jessie
Wilkins



Jimmy
Willis



Street
Wetherington



Jerry
Thomas

OFFICERS

President - - - - - Geneva Hardesty
 Vice-President - - - - - Murray Pittman
 Secretary - - - - - Virginia Hassell
 Treasurer - - - - - Martha Gibbs
 Reporter - - - - - Virginia Hassell



Sophomores

A SOPHOMORE SPEAKS

At last our hectic freshman year is over, and our class has reached the second rung in our high school ladder. We no longer would be chided and called "silly freshmen".

This year we have won places in all the activities of our school. We boast ten basketball players, eight football players, five band members, and eleven glee club members.

Although this year may have seemed dull to other classes, it has proved to be indeed a wonderful experience for the Sophomores of '53; a year which we will long remember and cherish.

Our Junior year is looked forward to in highest anticipation by the members of our class. Our only hope is that our banquet can be as successful as those in the past. Truly this year has been one to remember.



J. W. Alligood, Doris Avery, Harmon Bennett, Christine Brachter, Joel Cannon, Mary Buttry, Ted Conway, Mary Chadwick, Stephen Dudley, Julia Congleton, Bruce Edwards, Leona Davis, Thomas Gooding.





Virginia Davis, Bobby Guthrie, Bobbie Dennis, James Harvey, Jessie Dixon, Gehrmann Holland, Martha Gibbs, James Holland, Carita Guthrie, Carlton Lewis, Geneva Hardesty, George Lewis, Charlene Harrell, Herbert Mason, Virginia Hassell, Larry Moore, Pat Herring, Earl Noe, Ann Hill, Charles Pake, Murray Pittman, Ada Lewis, Clarence Rhue, Billie Lewis, Henry Safrit, Patty Lewis, Buddy Smith, Fay Mason, Avery Smith, Janice Murphy, Elzie Tosto, Dotty Pake, Jimmy Wheatly, Irene Parker, Wayne Whitehurst, Barbara Piner, Harold Willis, Etta Taylor, Archie Willis, Annie Willis, Jeanne Jenkins, Jerry Conway.

OFFICERS

President - - - - - Jimmy Owens
 Vice-President - - - - - Robert Swain
 Secretary - - - - - Nina Fay Kirk
 Treasurer - - - - - Peggy Williams
 Reporter - - - - - Shirley Piner



Freshmen

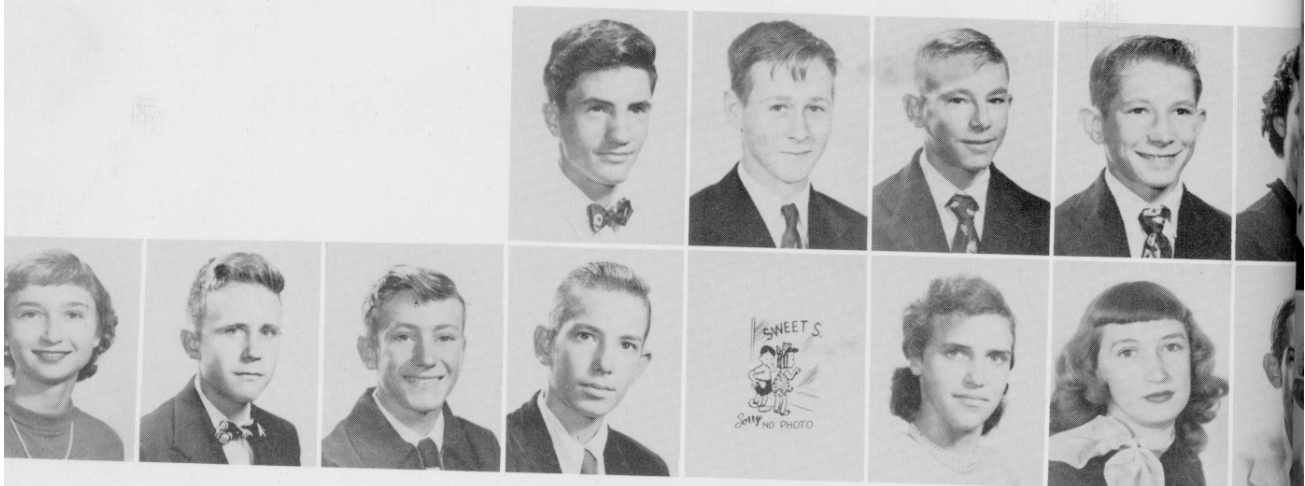
A FRESHMAN SPEAKS

With great enthusiasm and pride the Freshman Class of '53 ends its first year of high school.

All the pleasure and fun of the first year in high school has fired us with enthusiasm for a year passed and those to come.

We are proud of having outstanding members in all school activities in which Freshmen are allowed to participate.

In closing we leave our thanks to all our teachers, for without their help and guidance we would not have completed our first year in our beloved B. H. S.



Elisha Sanderson, John Basden, David Bell, Roger Bell, Bonnie Brinson, Irma Cannon, William Cannon, Thomas Carraway, Bruce Congleton, Mary Congleton, Lois Conner, Barbara Davis, Jimmy Davis.



Bertha Dixon, Terry Equils, Henry Eubanks, Ralph Eubanks, Audrey Garner, Gerald Gaskill, Mary Lou Gaskill, Agatha Gillikin, Glenda Gillikin, James Gillikin, Flynn Goldstone, George Gooding, Iva Goodwin, Jane Goodwin, James Graham, Bobby Griffin, Johnise Hardesty, Sylvia Harrell, Lewis Iverson, Dorothy Jarman, Mildred Johnson, Paula Jones, Nina Fay Kirk, Shelba Loughton, Richard Lewis, George Martin, Annette Merrill, Richard Merrill, John Miller, Jimmy Murphy, Terry Nance, James Norris, Jimmy Owens, Charles Parkin, Jimmy Potter, Shirley Piner, Jean Pittman, Sarah Piver, Kay Prytherch, Idell Riggs, Donald Small, Marvin Small, Johnnie Simpson, Aileen Smith, Lurea Smith, Ann Spivey, Lab Stallings, Kenneth Swain, Robert Swain, Clyda Ruth Taylor, Bobby White, Peggy Williams, Edward Willis, Jerry Willis, Thomas Willis, Jovce Chadwick.



Miss Gertrude Styron, Dickie Moore, John Chaplin, Doug Piner, Horace Swain, Don Lancaster, Hugh Fulcher, Donald Cummings, Vonda Goodwin, Rae Hassell, Ella Blake, Ada Owens, Evelyn Merrill, Barbara Downum, Donna Lewis, Virginia Edwards, Shirley Pittman, Ruby Chadwick, Peggy Ipcock, Milan Buttry.

Eighth Grades

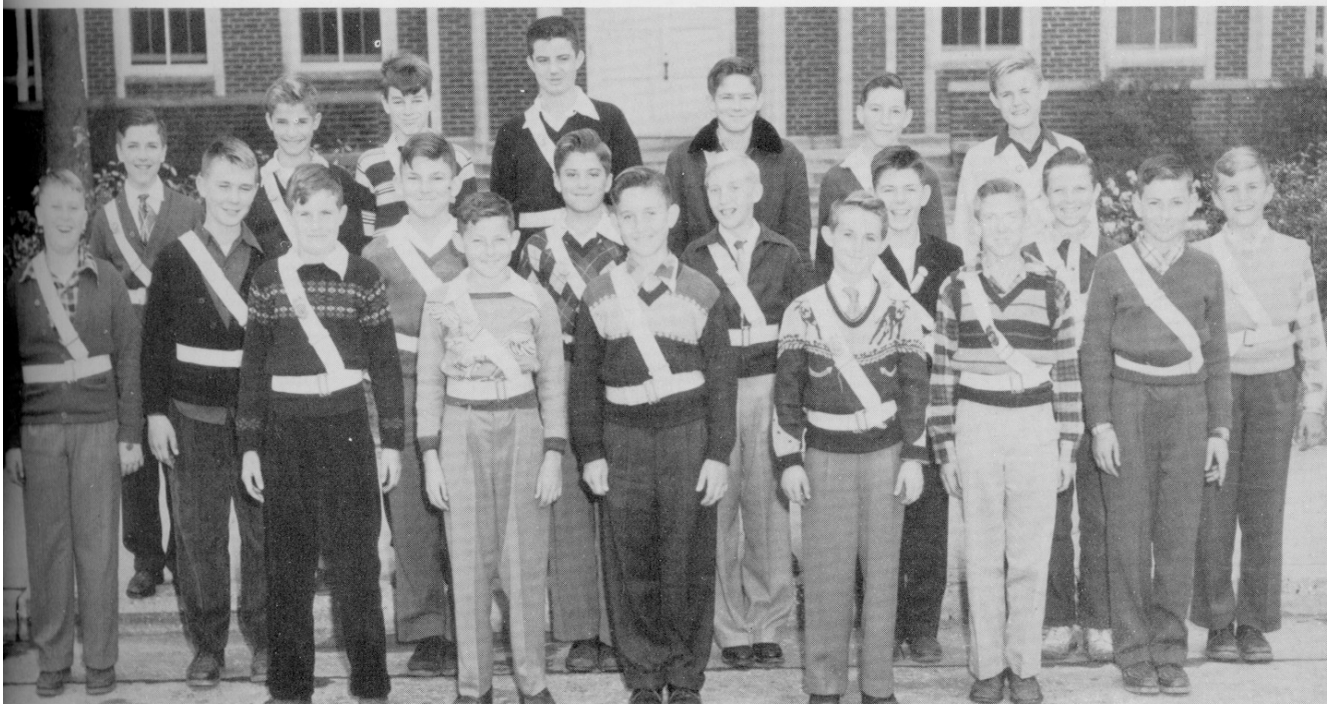


Daniel Ricks, Glenn Conway, Clarence Ipock, Gene Small, Mr. Evans, Elizabeth Dixon, Betty Whitehurst, Jean Chadwick, Rita Mason, Julius Dunn, Bobby Willis, Charles Springle, Norma Gillikin, John Bradshaw, Kate Willis, Kay Pellitier, Nancy Broda, Janice Becton, Iris Harvelle, Martha Ransome, Valerie Taylor, Laura Hudgins, Memrie Mosier, Susan Lee, Sarah Jones, Dorothy Searle, Francis Ballance, Remona Styron.

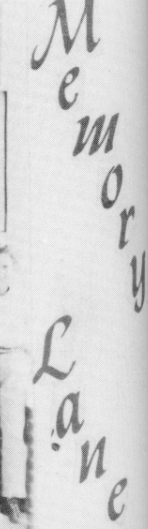
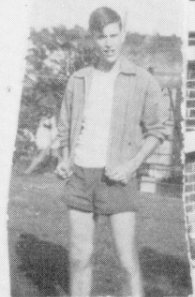
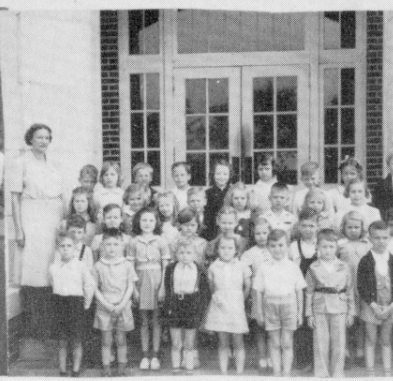


Donald Dixon, William Riggs, Jane Safrit, Winky Willis, Catherine Potter, Evelyn Owens, Mrs. John Evans, Bobby Mason, William Wiggins, Joe Chipman, Alan Windley, Bobby Russell, Billy Powell, Jiles Loftin, Gerald Smith, Frances Johnson, Barbara Taylor, Margaret Springle, Virginia Moore, Rosemary Koon, Grace Ricks, Daphne Dudley, Sue Sewell, Sheral Tolar, Carol Fillingain, Lidia Connor, Norma Lewis, Sidney Guthrie, Sylvia Fodrie.

Eighth Grades Safety Patrol



Rusty Gray, H. D. Paul, Major Jarman, Johnny Dennis, Clayton Hunnings, Horace Swain, Raymond Gillikin, Don Cummings, Joe Pake, Don Gaskill, Bobby Willis, Don Lancaster, Tommy Jones, Dan Willis, Charles Smith, Larry Kirk, Tommy Lann, Alec Copeland, Eugene Piver, Earnest Carraway, Dickie Moore.



Down

Memory Lane





First row: Miss Gladys Chadwick, Inez Woodard, Carol Jones, Janice Murphy, Peggy William, Ann Noe, Minnie Pake, Frances Fulcher, Nina Kirk, Fay Mason, Virginia Davis. Second row: Malcolm Sabiston, Billy Hudgins, Jimmy Davis, Jimmy Modlin, James Graham, Gordon Davis, Wayne Whithurst, Ghermann Holland, Johnny Olund, Jimmy Willis, Gus Farlow.



Student Council

OFFICERS

President - - - - - Charles Farlow
 Vice-President - - - - - Inez Woodard
 Secretary - - - - - Janice Murphy
 Treasurer - - - - - Ann Noe



Jackie Dickinson, Bobby Dennis, Carol Jones, Vickie Taylor, Barbara McKay, Sue Gibbs, Ann Noe, Phyllis Piner, Minnie Pake, Ann Owens, Inez Woodard, Bitsy Brooks, Anita Copland, Fay Merrell, Barbara Harris, Beulah Eubanks, Ada Lewis, Jane Robinson, Miss Lena Duncan, Elizabeth Woodard, Virginia Hassell, Grace Whithurst, Emma Perry.

Tri-Hi-Y

OFFICERS

President - - - - - CAROL JONES
 Vice-President - - - - - MINNIE PAKE
 Secretary - - - - - INEZ WOODARD
 Treasurer - - - - - ANN OWENS
 Program Chairman - - - - BITSY BROOKS
 Parlimentarian - - - - - FAY MERRELL





First row: Margaret Bryant, Virginia Hassell, Charlene Harrell, Joan Chipman, Sylvia Harrell, Jane Robinson, Barbara Harris, Janice Keller, Anita Copeland, Paula Jones, Pat Herring, Christine Bratcher, Virginia Hill, Ann Spivey. Second row: Sadie Harris, Nina Kirk, Bonnie Brinson, Patty Lewis, Sue Gibbs, Shirley Piner, Barbara Piner, Shelby Laughton, Joyce Chadwick, Mary Chadwick, Peggy Williams, Etta Taylor, Clyda Taylor, Lib Stallings. Third row: Kay Pythrich, Julia Kelly, Bobby Guthrie, Edwin Becton, Archie Willis, Gerald Taylor, Malcolm Sabiston, Ghermann Holland, Patsy Daniels, Andy Searle, Wayne Whithurst, Thelma Darling, Jimmy Wheatly, Jim Murphy, Carretta Guthrie, Fran Fulcher, Julia Conkleton.



Glee Club

OFFICERS

President - - - - - EDWIN BECTON
 Vice-President - - - - BARBARA HARRIS
 Secretary and Treasurer - - - - SUE GIBBS
 Reporter - - - - - CLYDA TAYLOR



Fred Merrill, Helen Lee, Patricia Garner, Joyce Willis, Shirley Dudley, Corrinne Scurlock, Margaret Bryant, Phyllis Pake, Ann Owens, Anita Copeland, Jane Robinson, Frances Fulcher, Ted Spivey, Grace Whithurst, Andy Mason, Lewis Woodard, Edwin Becton, Bobby Davis, Gerald Taylor, Donald Taylor, Gordon Davis, Barbara Harris, Joan Chipman, Kay Willis, Bitsy Brooks, Jean Taylor, Fay Merrell, Ann Noe, Barbara McKay, Phyllis Piner, Sadie Harris, Bobby Smith, Darlene Mathews, Elizabeth Woodard, Frank Gillikin, Patsy Danils, Janice Keller, Johnny Olund, Sue Gibbs, Inez Woodard, Billy Eudy, Mrs. Anne Salter.

Beta Club

OFFICERS

President - - - - - Gordon Davis
 Vice-President - - - - - Bitsy Brooks
 Secretary - - - - - Jean Taylor
 Treasurer - - - - - Barbara McKay
 Program Chairman - - - - - Ann Noe
 Recreation Chairman - - - - - Fay Merrell





Jackie Dickinson, Fay Merrell, Bobby Dennis, Ann Owens, Carol Jones, Molly Hopkins, Phyllis Piner, Minnie Pake, Barbara Harris, Jean Taylor, Sue Gibbs, Ann Noe, Lewis Woodard, Murphy Pittman, Ed Willis, Frank Gil-
likin, Billy Eudy, Johnny Olund, Henry Safrit, James Holland, Ronnie Quidley, Larry Moore, Andy Mason, Gher-
mann Holland, Jimmy Owens, Bobby Davis, Jimmy Modlin, Gordon Davis, Harold Willis, Donald Taylor, Wal-
lace Connor, Gus Farlow, William Longest,
Roy Clemmons, Johnny Betts, Mr. T. H. Mc-
Quaid, Advisor.



Varsity Club

OFFICERS

President - - - - - Johnny Olund
Vice-President - - - - - Frank Gillikin
Secretary - - - - - Minnie Pake
Treasurer - - - - - Jackie Dickinson



Left to right: Molly Hopkins, Phyllis Piner, Sue Gibbs, Bobby Dennis, Fay Merrell, Barbara Harris, Jean Taylor, Ann Noe, Ann Owens.

Cheer Leaders

Head Cheerleader -- FAY MERRELL

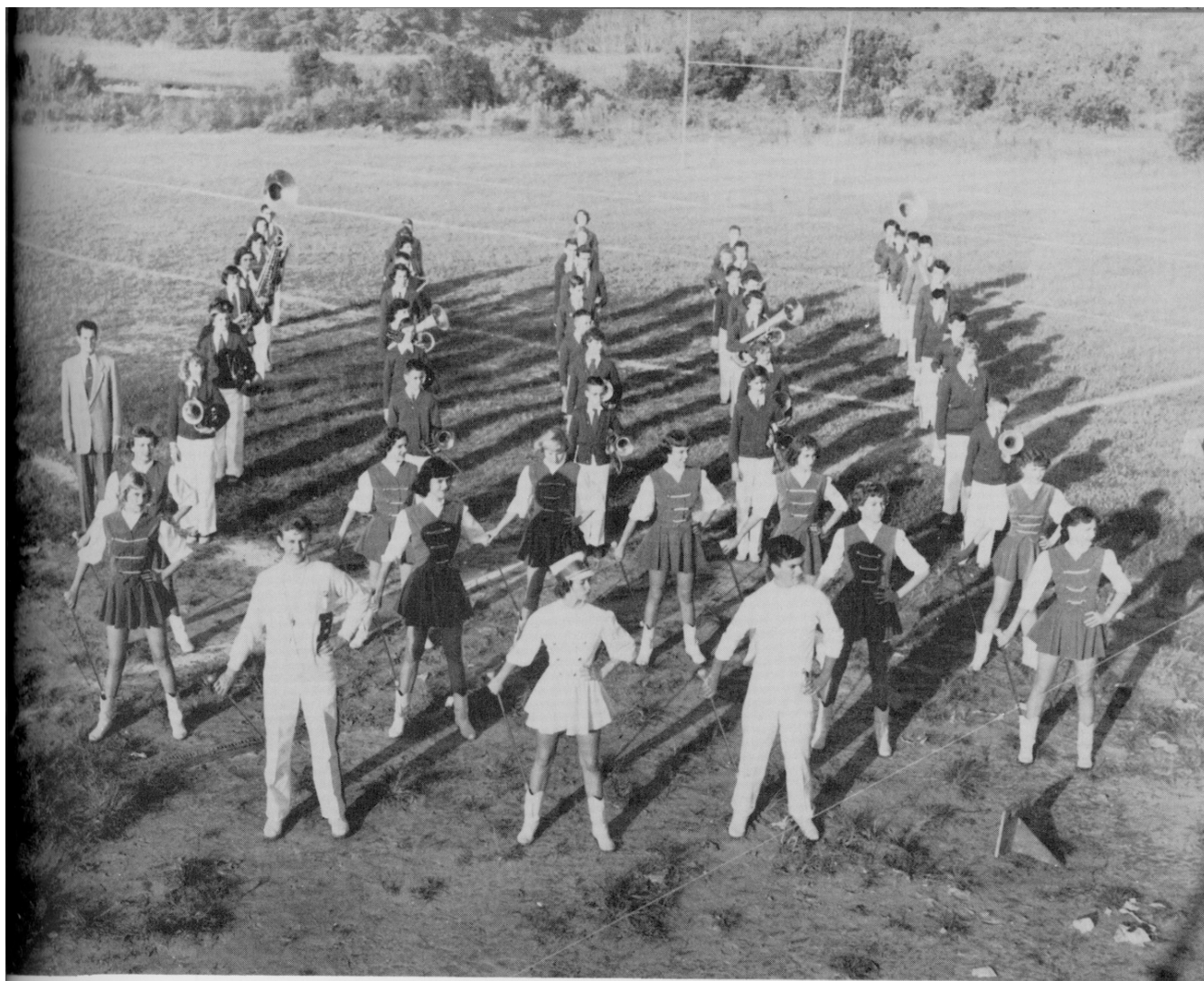




From left up: Pat Herring, Marie Robinson, Paula Jones, Barbara Piner, Virginia Davis, Audrey Garner, Sylvia Harrell, Patsy Sadler, Virginia Hassell, Joyce Chadwick, Head Majorette, Charlene Harrell.



Majorettes



Mr. Franklin Jones, Director, Ada Owens, Susan Lee, Nancy Mason, Janice Murphy, Jane Robinson, Jane Safrit, Ted Spivey, Charles Smith, Sara Jones, Ann Spivey, Johnise Hardesty, Ken Wetherington, Emma Perry, Judy Moore, David Chipman, Michel Noe, Annette Merrill, Harman Bennett, Joe Chipman, Edwin Becton, Jackie Chaplin, Ann Hill, Bitsy Brooks, Irma Cannon, Shirley Pittman, Winkey Willis, Phyllis Pake, Hugh Fulcher, Stephen Dudley, James Lewis, Don Lancaster, Mathew Dudley, Dawn Taylor, Sammy Merrill, Jimmy Murphy, Dot Serale, Alec Copeland, Walter Phillips, Calvin Jones, Dotty Pake, Linda Salter.

Band

OFFICERS

President - - - - - TED SPIVEY
 Vice-President - - - - - JANE ROBINSON
 Secretary and Treasurer - - - - - PHYLLIS PAKE
 Librarian - - - - - JIMMY MURPHY
 Manager - - - - - EDWIN BECTON





Lib Stallings, Ann Spivey, Phyllis Pake, Irma Connon, Verna Carraway, Inez Smith, Anita Copeland, Emma Perry, Audrey Garner, Sadie Harris, Janice Keller, Patsy Daniels, Lydia Blake, George Goodin, Jessie Wilkins, Gerald Taylor, James Taylor, Henry Eubanks.



OFFICERS

President - - - - -	SADIE HARRIS
Vice-President - - - - -	GERALD TAYLOR
Secretary - - - - -	GENEVA HARDESTY
Treasurer - - - - -	GENEVA HARDESTY
Reporter - - - - -	PATSY DANIELS



Jane Goodwin, Jessie Wilkins, Marie Avery, Irene Parker, Kay Prytherch, Agatha Gillikin, Audery Garner, Glenda Gillikin, Sylvia Harrell, Lois Connor, Mary Buttry, Ann Spivey, Aileen Smith, Sara Piver, Paula Jones, Sue Gibbs, Barbara Harris, Jane Robinson, Virginia Davis, Fay Mason, Barbara Davis, Irma Cannon, Ada Lewis, Johaise Hardesty, Shirley Piner, Peggy Williams, Shelba Loughton, Clyda Taylor, Jessie Dixon, Mary Gaskill, Joyce Chadwick, Mary Chadwick, Bonnie Brinson, Mary Congleton, Dot Jarman, Julia Congleton, Doris Avery, Mildred Johnson, Lib Stallings, Annette Merrill, Mrs. David Beveridge, Nina Fay Kirk.

F.H.A.



OFFICERS

President - - - - - FAY MASON
 Vice-President - - - - VIRGINIA DAVIS
 Secretary - - - - - GENEVA HARDESTY
 Treasurer - - - - - ETTA TAYLOR
 Reporter - - - - - MARY ANN CHADWICK



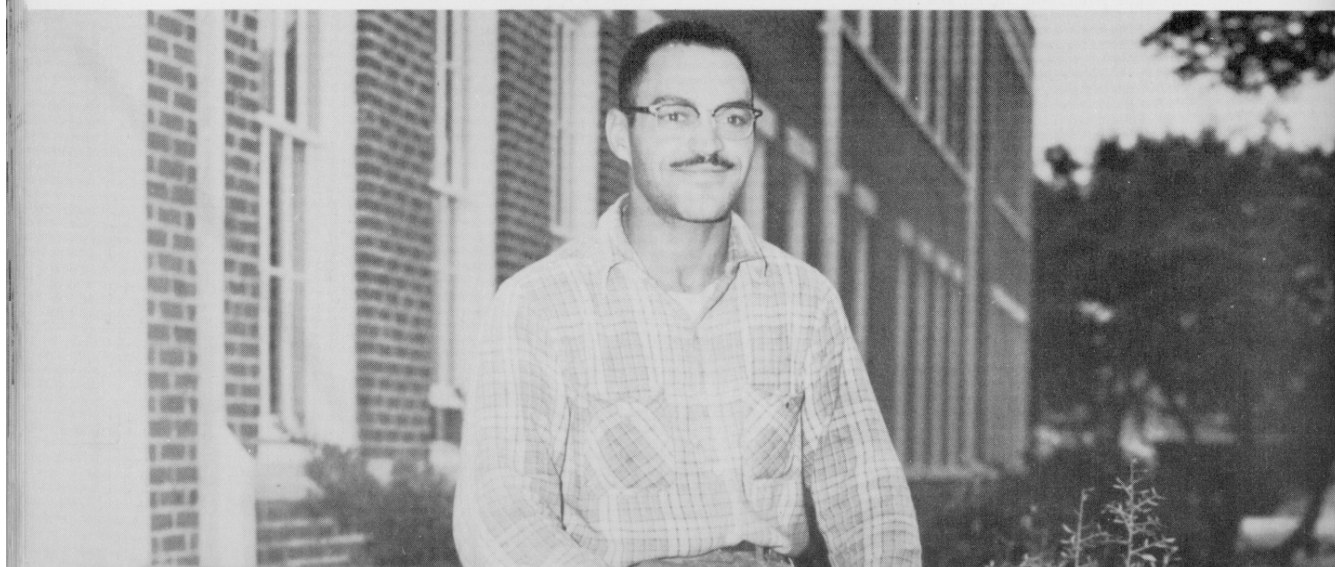


Ted Spivey, James Taylor, Fred Merrill, Malcolm Sabiston, Eliza Tosto, Earl Noe, Sadie Harris, Emma Perry, Doris Temple, Gerald Taylor, Tommy Gooding, Curtis Josey, Andy Mason, Johnny Olund, Wallace Connor.

Bus Drivers

In Appreciation

To ALBERT, our beloved janitor, we the Seniors of 1953 wish to express our sincere thanks for the wonderful and faithful service which you have rendered to Beaufort High.



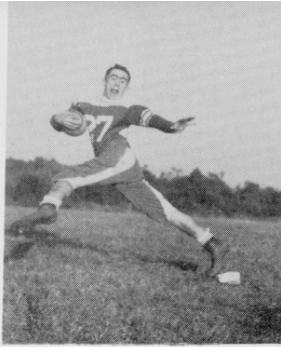




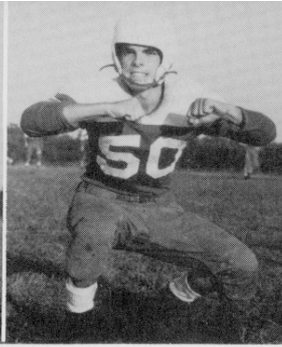
First row: Lewis Woodard, Ghermann Holland, Harold Willis, Johnny Olund, Billy Eudy, Wallace Connor, B. G. O'Neal, Jimmy Modlin, Donald Taylor, Andy Mason. Second row: Butch Hassell, Murphy Pittman, Ed Willis, Gordon Davis, Charles Pake, Jimmy Owens, James Holland, Jerry Willis, Jimmy Davis, Coach John Evans. Third row: William Longest, Manager, Andrew Searle, Robert Swain, Jimmy Potter, Larry Moore, Herbert Prytherch, Jamie Norris, Henry Safrit, Bobby Davis, Roy Clemmons, Manager.

Football

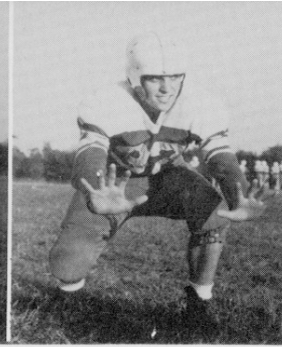
Beaufort	14	Manteo	20	Beaufort	13	Jones Central	6
Beaufort	13	Camp Lejeune	0	Beaufort	20	Pamlico	6
Beaufort	7	Hertford	27	Beaufort	20	Ayden	6
Beaufort	0	Morehead City	6	Beaufort	6	Elizabeth City	31
Beaufort	18	Swansboro	8	Beaufort	7	Morehead City	25



BILLY EUDY
Tail-Back
Co-Captain



ANDY MASON
Left-Guard



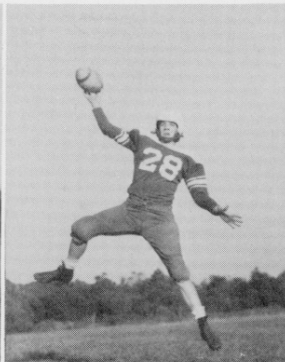
JIMMY MODLIN
Tackle



GUS FARLOW
Left-End



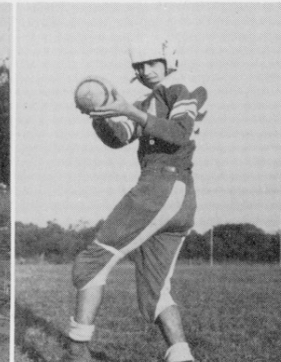
JOHNNY OLUND
Wing-Back



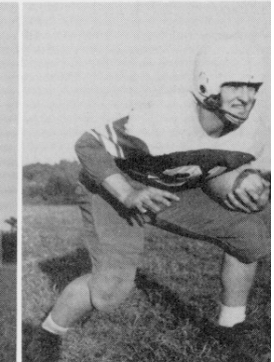
LEWIS WOODARD
Fullback



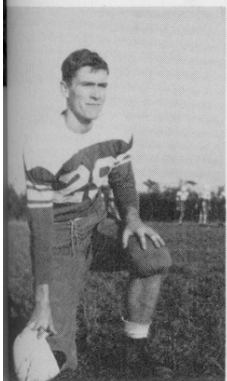
JOHN EVANS
Coach



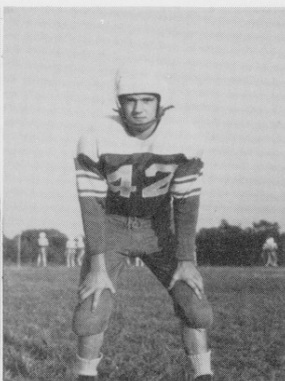
B. G. O'NEAL
Right-End



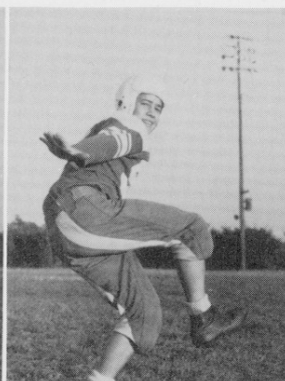
WALLACE CONNOR
Fullback
Co-Captain



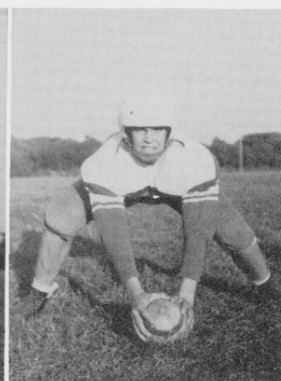
GORDON DAVIS
Right Guard



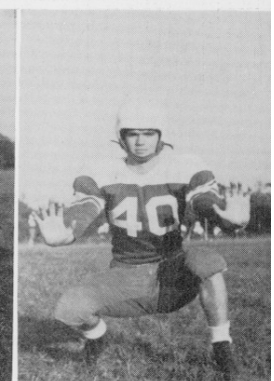
DONALD TAYLOR
Blocking Back



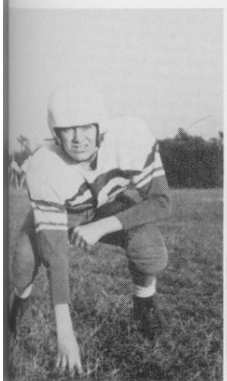
MURRAY PITTMAN
Wing-Back



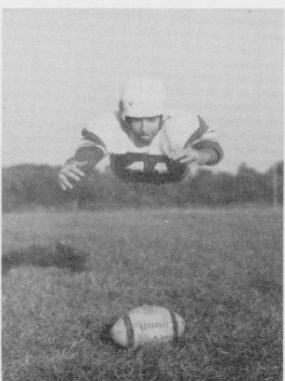
BOBBY DAVIS
Center



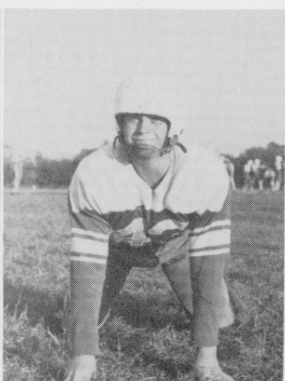
LARRY MOORE
Right End



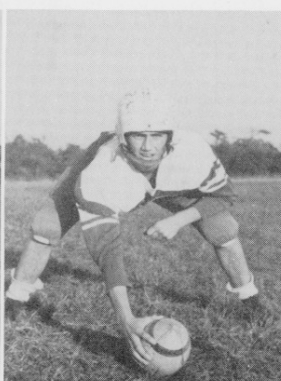
HENRY SAFRIT
Left-Guard



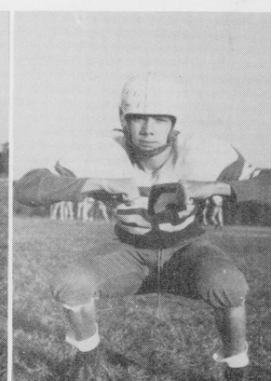
GEHRMANN HOLLAND
Left Tackle



ED WILLIS
Right Tackle



HAROLD WILLIS
Center



JIMMY OWENS
Right Guard

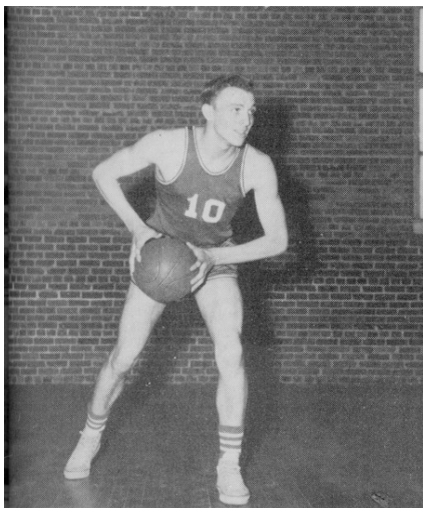


Lewis Woodard, Frank Gillikin, Billy Eudy, B. G. O'Neal, Jimmy Modlin, Bruce Edwards, James Holland, Murray Pittman, Gehrmann Holland, Mr. T. H. McQuaid, Coach.

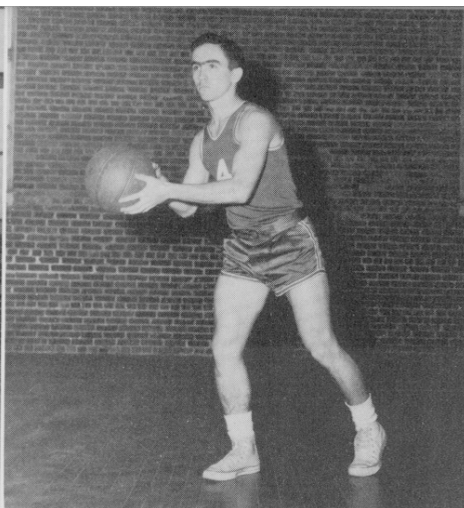
Boys' Basketball

RECORD

Beaufort	48	Camp Lejeune	26	Beaufort	67	Atlantic	50
Beaufort	39	Smyrna	43	Beaufort	62	Belhaven	25
Beaufort	36	Pamlico	41	Beaufort	50	Jones Central	48
Beaufort	31	Newport	46	Beaufort	76	Morehead	57
Beaufort	55	Swansboro	37	Beaufort	52	Smyrna	40
Beaufort	40	Atlantic	42	Beaufort	59	Camp Lejeune	47
Beaufort	69	Dixon	37	Beaufort	49	Pamlico	55
Beaufort	71	Belhaven	36	Beaufort	50	Morehead	33



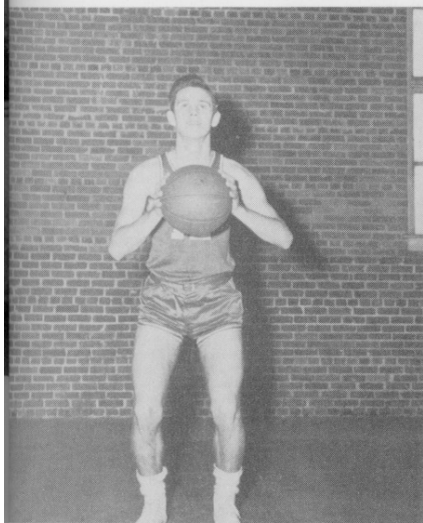
JIMMY MODLIN
Center



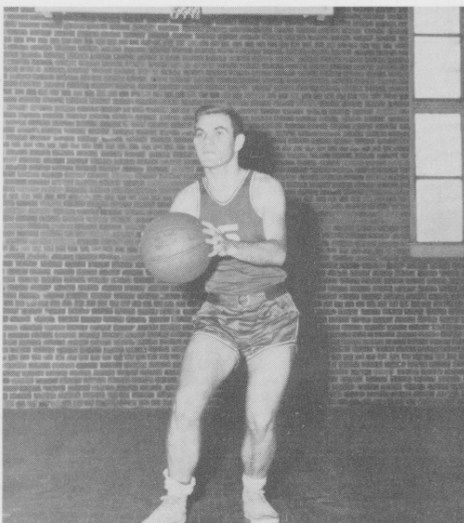
BILLY EUDY
Captain



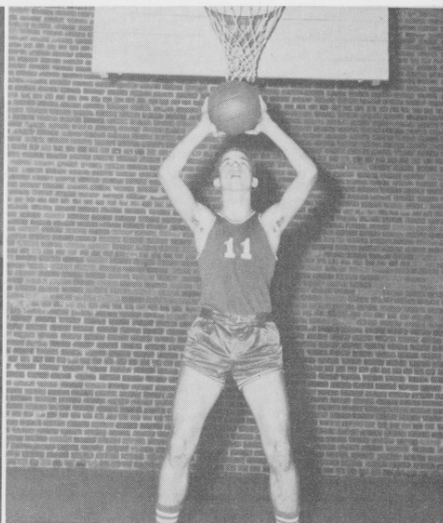
LEWIS WOODARD
Guard



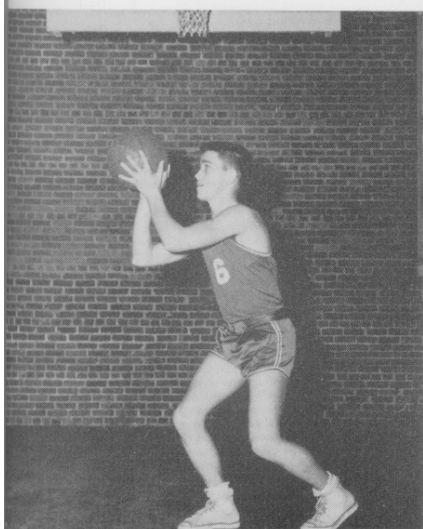
B. G. O'NEAL
Forward



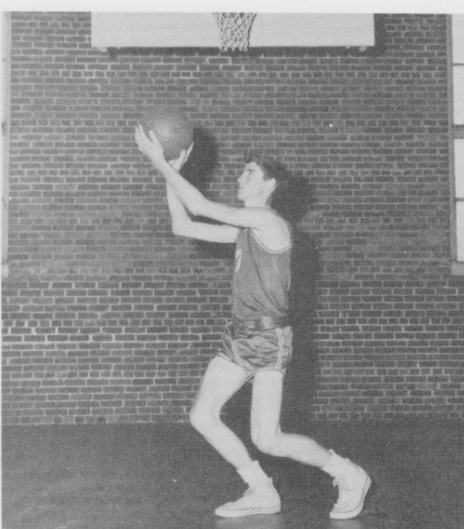
FRANK GILLIKIN
Guard



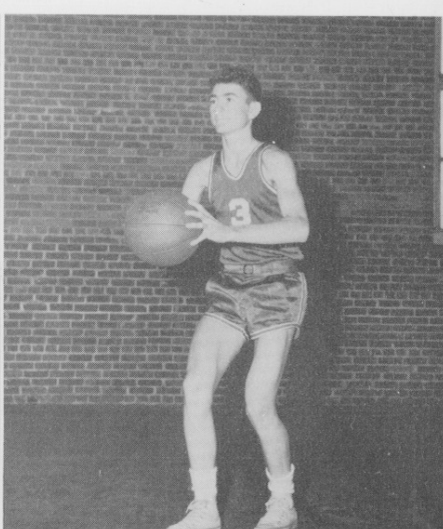
GEHRMANN HOLLAND
Guard



MURRAY PITTMAN
Forward



HERBERT MASON
Guard



JAMES HOLLAND
Forward

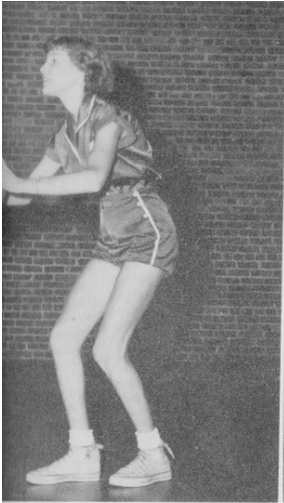


Leona Davis, Patsy Sadler, Jackie Dickinson, Minnie Pake, Carol Jones, Colleen Guthrie, Peggy Williams, Shirley Piner, Ann Owens, Bitsy Brooks, Vickie Taylor, Anita Copeland, Patty Lewis, Virginia Davis, Mr. John Evans, Coach, Bertha Dixon, Joyce Chadwick, Emma Perry, Ann Hill, Ada Lewis, Barbara Willis, Martha Gibbs, Mary Buttry.

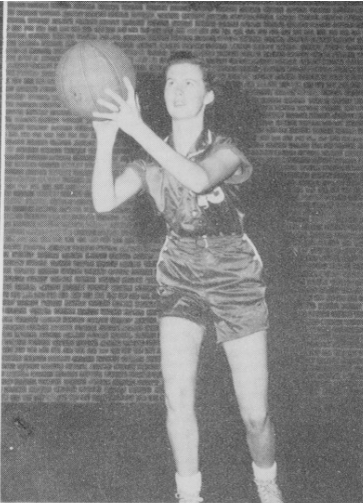
Girls' Basketball

RECORD

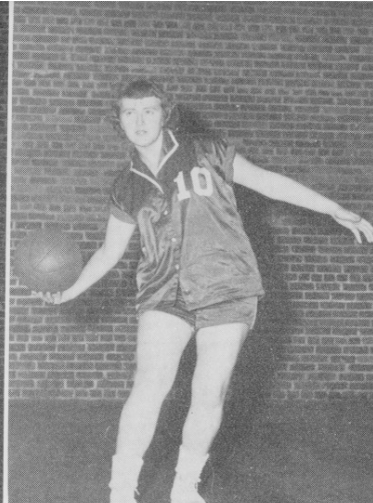
Beaufort	46	Camp Lejeune	11	Beaufort	56	Atlantic	32
Beaufort	46	Symrna	20	Beaufort	49	Belhaven	42
Beaufort	34	Pamlico	55	Beaufort	32	Jones Central	33
Beaufort	55	Newport	39	Beaufort	55	Morehead	46
Beaufort	45	Swansboro	66	Beaufort	59	Smyrna	50
Beaufort	58	Atlantic	38	Beaufort	46	Camp Lejeune	40
Beaufort	62	Dixon	35	Beaufort	46	Pamlico	71
Beaufort	75	Belhaven	53	Beaufort	63	Morehead	77



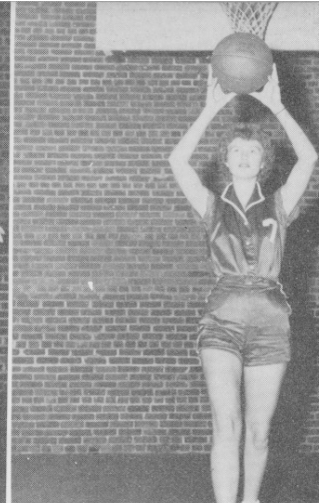
COLLEEN GUTHRIE-F



CAROL JONES-F
Co-Captain



MINNIE PAKE-G
Co-Captain



JACKIE DICKINSON-F



BITSY BROOKS-G



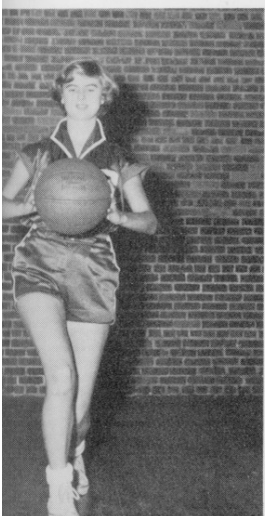
PEGGY WILLIAMS-F



LEONA DAVIS-G



PATSY SADLER-F



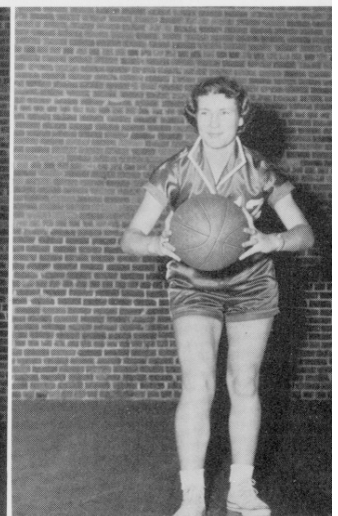
KAY LEWIS-G



SHIRLEY PINER-F



ANITA COPLAND-G



VICKIE TAYLOR-G



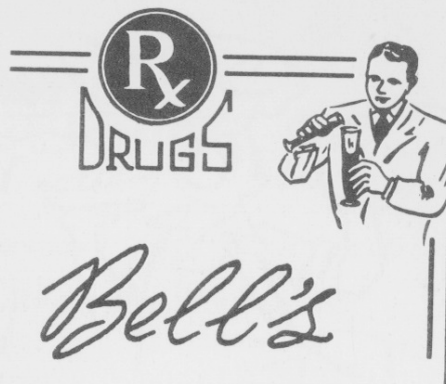
Compliments of
"UNCLE HARVEY" W. SMITH
FISHMEAL COMPANY

Beaufort, North Carolina



Compliments of

Guthrie & Jones
DRUG STORE



Bell's
DRUG STORE

"Appreciates Your Patronage"

Day Phone
2-323-1

Night Phone
2-397-1

Compliments of

Ball's
RECREATION CENTER

Bowling - Skating

Havelock, North Carolina




DOM'S LUNCH

The Little Place with the
Big Welcome.

Sandwiches, Soft Drinks, and
Milk Shakes of all Kinds.

Open 8:00 to 1:00 a.m.
Curb Service from 5 a.m.





Fresh
bread and pastries
by
Bamby
"Good Eating Day After Day"
ROYAL BAKING COMPANY
1 Raleigh, North Carolina

Good Food!
Captain Bill's

WATERFRONT CAFE

Morehead City,
North Carolina

Phone
6-4089

Paul
MOTOR CO
DEPENDABLE
SERVICE

Phone 2-4261
Beaufort, North Carolina

Real Car Values



"Service and
Quality"

Mobley Buick
CO.



Quality cleaning

"Wear Clean Clothes"
JOHNSON-SAUNDER'S,
Dry Cleaning Company

Phone
2-4471

Beaufort,
North Carolina

Compliments of
C. G. GASKILL and COMPANY



"Feeds and Seeds"



Compliments of
FELTON'S

Beaufort,
North Carolina

Shoes and
Men's Wear

Compliments to
the Seniors of '53

Clyde Jones
GAS CO.

Your Pyrofax Dealer

Tire
SERVICE CO.

Morehead City, North Carolina

Recapping, Retreading
of tires

J. J. Tom Potter

"The Man Who Serves
You with Sinclair"
Front Street,
Beaufort, North Carolina



Good Luck
Seniors of 1953

Merrill's
DRESS SHOP

"Everything for Madam"

Front Street
Beaufort, North Carolina



Sanitary
Restaurant

"Where the
People of
Carteret Eat"

Morehead City,
North Carolina



ANN STREET ESSO STATION

Corner Live Oak and Ann Streets

Sonny Lane
Manager

Phone
2-5371

Compliments of



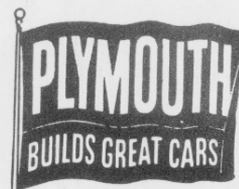
Whaler's
TEXACO STATION

Bridges Street
Morehead City,
North Carolina



Congratulations
Seniors

Parker
MOTORS



MAKE YOUR HOME COMPLETE

By Having Awnings and Blinds in Your Home

Compliments of

WHITEHURST AWNING
and
BLIND COMPANY

2½ Miles West of Morehead City



fine jewelry

Always

Compliments of

B.A. Bell
JEWELERS

PUT YOUR BEST FOOT FORWARD

Trade at

C.D. Jones
CO.

"We thank you for your
patronage."

Compliments to the Seniors
of '53



Joe House
DRUG
STORE

Beaufort,
North Carolina

Dial 3141
or 3151



Good Luck
Seniors of '53

Brady's

Beaufort,
North Carolina



Better Values

At Sound Appliance Company
Frigidiare Dealer for
Carteret County

Morehead City,
North Carolina





Quality
GROCERIES

CITY GROCERY
"Beaufort's Finest"
Front Street
Beaufort, North Carolina

Congratulations To The Seniors Of '53
MAOLA MILK AND ICE CREAM COMPANY



Enjoy
GOOD FOOD



WHITE'S MILK AND
ICE CREAM COMPANY
Morehead City, North Carolina



For Better Values
Phone 2-5566

Compliments of

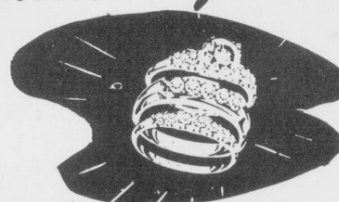
Beri's

BICYCLE AND STOVE SHOP

JARVIS HERRING JEWELERS

Watches By
Hamilton - Elgin - Bulova
Diamonds By
Keepsake - Crescent - Princess

Exquisite Jewelry





Compliments of

THE
Midzelle

NET AND TWINE COMPANY

Dealers In
Commercial Fish Nets and Fishery Supplies

Phones: 2-5991 or 2-5961
Lennoxville Road
Beaufort, North Carolina

Compliments of

MOREHEAD CITY
DRUG COMPANY

Quality Drugs Always

Morehead City, North Carolina

*This is Your
Invitation*

*The
Dairy
Queen*

Morehead City, North Carolina

Fine FURNITURE

At all Times

Hamilton
FURNITURE CO.

Beaufort, North Carolina

SERVICE!

Always

MACHINE and
SUPPLY COMPANY



W. D. FREEMAN

AND Wholesale Grocery
SAVE
AT

Morehead City, North Carolina

Carteret's

FOREMOST
HOLDEN'S
RESTAURANT



Beaufort, North Carolina

latest fashions

From Potter's
Dress Shop
Ladies Ready to Wear



Beaufort, North Carolina

GIVE US YOUR WASHDAY BLUES



Sunshine
LAUNDRY

Morehead City,
North Carolina



Flowers
For Every
Occasion

BEAUFORT
FLORIST

Beaufort,
North Carolina

Compliments of

Cannon
BOAT
WORKS

Boat Building and Repairing



Good Luck
To The
Seniors Of '53



Compliments To The
Seniors Of 1953

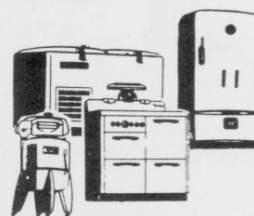
New Bern

OIL AND FERTILIZER
COMPANY

Gales

REFRIGERATION COMPANY

Electrical
Appliances



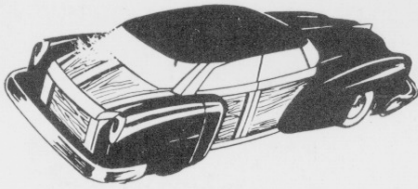
Fine Furniture
Always
Blake & James

Morehead City, North Carolina



Imperial
BARBER
SHOP

Beaufort's Newest
Beaufort, North Carolina



BOYD-MATHIS MOTORS

Your Mercury Dealer For
Eastern North Carolina

GOOD FOOD

Compliments of The

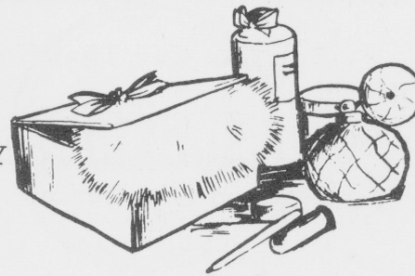
Airport Grille

Latest Fashions

DOWNUMS'

The Department Store For
The Whole Family

THE
BEAUTY
BAR



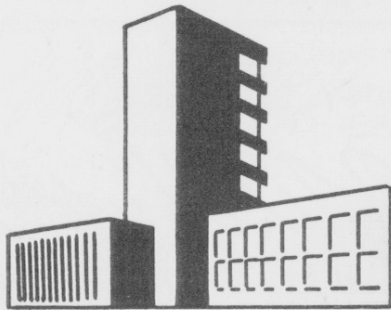
We Sell Revlon Products
Beaufort, North Carolina

Let Us Help You Build Your Home

Compliments of

Scarboro-Safrit

LUMBER COMPANY



Lumber Co.

Located On The Lenoxville Road
Beaufort, North Carolina



Robert L. Rose

For The Car That Goes

Leading Morehead City
Used Car Dealer

Morehead City, North Carolina

MOREHEAD CITY FLORIST
Morehead City, North Carolina

We Wire
Flowers
Everywhere

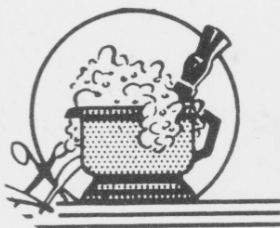


Best Wishes To The
Graduating Class Of 1953

Bells

FUNERAL HOME
Morehead City, North Carolina

Compliments To The Seniors



City
BARBER
SHOP

Beaufort, North Carolina



Plumbing
Contractors
(We Finance)
Household
Appliances
Fixtures

BEAUFORT PLUMBING
AND SUPPLY COMPANY
520 Front Street - Phone 2-4956
Beaufort, North Carolina



COMMUNITY BUILDERS

G. W. Hunley's

Everything For The Home Builder

Located At The Intersection
Of 101 and 70
Beaufort, North Carolina

Compliments To The
Graduating Class Of 1953

Carters Quick Freeze

Beaufort, North Carolina



Ladies Ready-To-Wear

Front Street
Beaufort, North Carolina



Front and Turner Street
Beaufort, North Carolina

Compliments To The



Merrill's



Everything
For The
Man

**WESTERN AUTO
ASSOCIATE STORE**

Front Street
Beaufort, North Carolina

Latest Fashions

Styron's

DEPARTMENT STORE

Morehead City, North Carolina

Jack & Gill
SHOP

Beaufort, North Carolina

Clothes
For The
Kiddies



YOUR

Appearance

IS OUR BUSINESS

Jeff's

BARBER SHOP

Beaufort, North Carolina



Shop and Save
At The

Ramsey

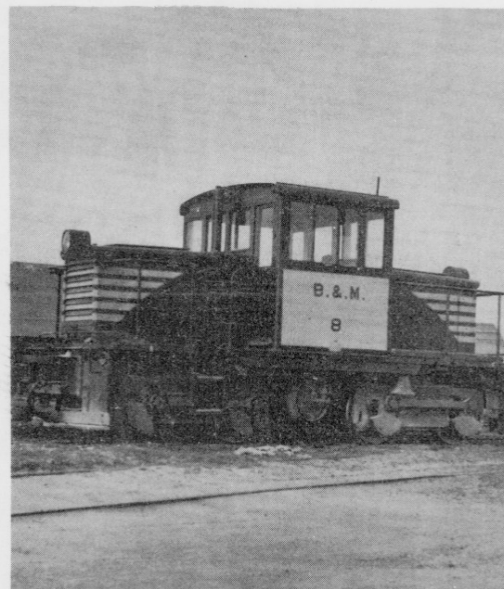
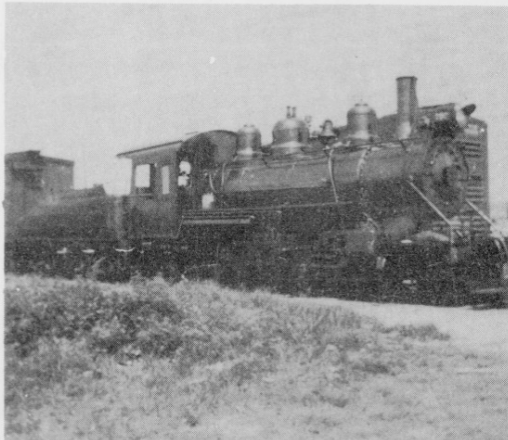
WHOLESALE GROCERY

Beaufort, North Carolina

BEAUFORT AND MOREHEAD
RAILROAD COMPANY

A. T. LEARY, Lessee
General Offices

Beaufort, North Carolina





Compliments To The
Seniors Of '53

Beebe
BLUEBERRY FARM

Hooper
ESSO STATION

Gas - Oil - Lubrication

Beaufort, North Carolina

Compliments To The
Seniors Of 1953

Sara's

DRESS SHOP

Front Street
Beaufort, North Carolina



Duchess
BEAUTY SHOP

Beauty Service For The Ladies

Revlon Products

Beaufort, North Carolina

The Griddle

Managed By MRS. GUY SPRINGLE

Home Cooked Meals

Open Daily 8 A.M. - 8 P.M.

Beaufort, North Carolina

Best Wishes To The
Senior Class Of '53

Dill's

FUNERAL HOME

Morehead City, North Carolina



Good Luck To The Seniors Of '53

The

Tri-Hi-Y



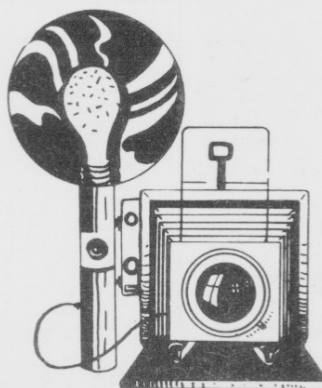
The Spot

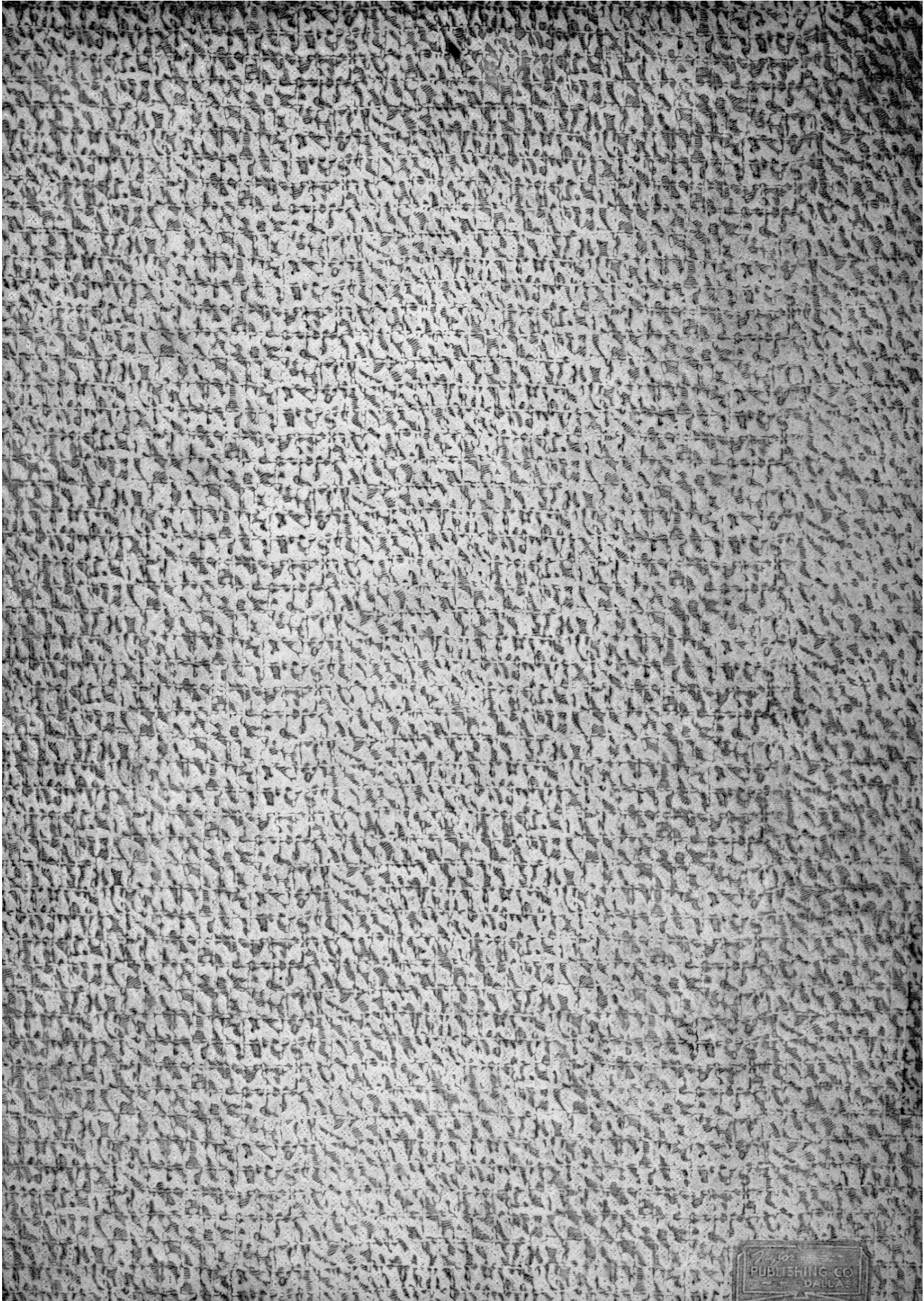
Beaufort, North Carolina

THE BEST
HAMBURGERS
IN TOWN

In Appreciation

The Senior Class of 1953 would like to express its most sincere thanks to MRS. KATHLEEN SADLER. Without her loyal help in time of our great trouble, it would have been impossible to have published THE MAINSAIL this year.





W. W.
PUBLISHING CO.
DALLAS