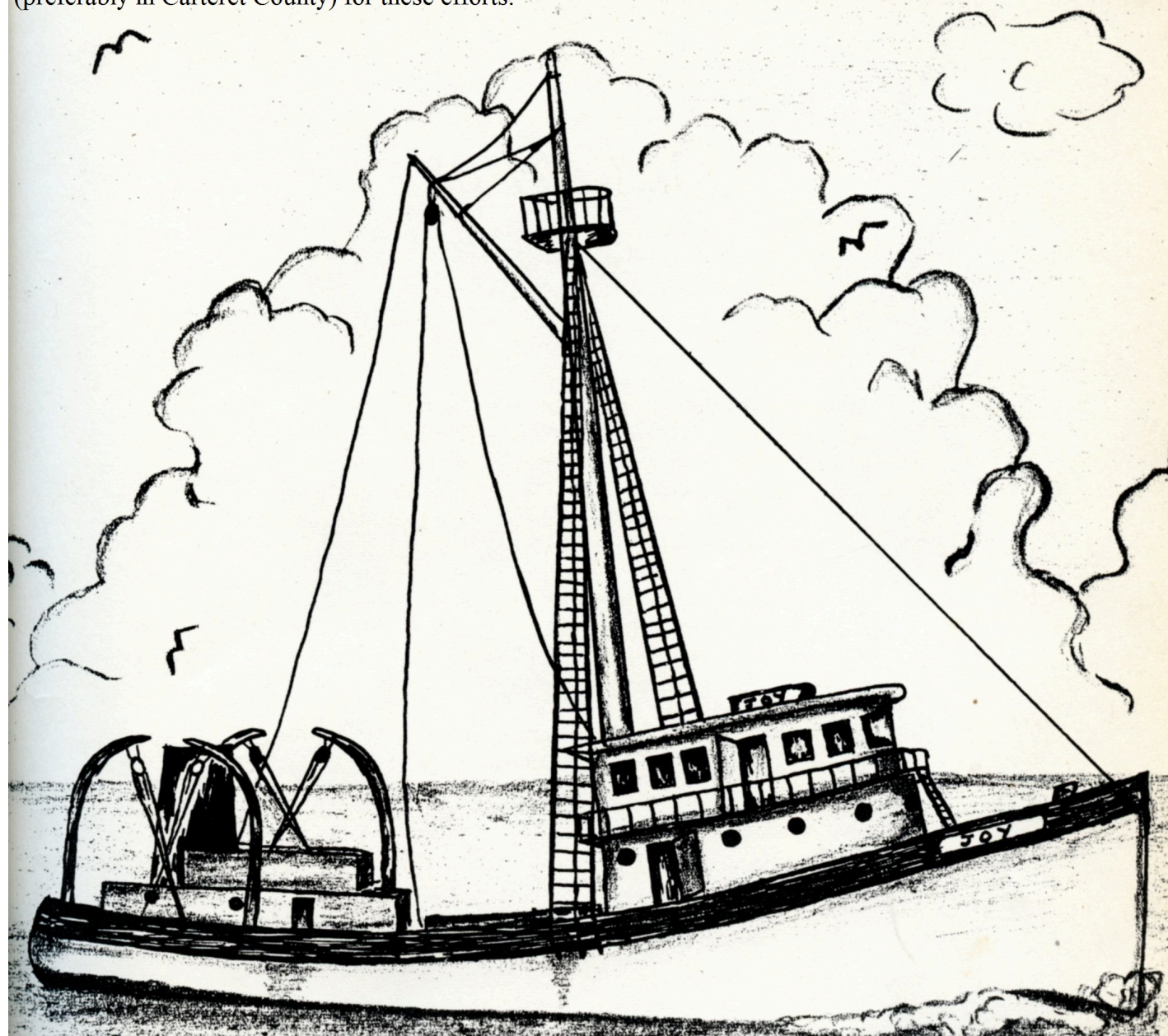




'52

The Mainsail

Prepared for display by Shannon Adams. Please consider donating to the Core Sound Waterfowl Museum, Carteret County Historical Society, Promise Land Society, Salter Path Heritage Association, or charity of your choice (preferably in Carteret County) for these efforts.



The Mainsail

THE SENIOR CLASS
of
1952

Dedication

At our first introduction, school at once became interesting. Some were at that age when they were ready to quit and seek new and exciting adventures. But with her help they continued to struggle through the few remaining years. Her smile seemed to drive away the clouds on a rainy day. We suddenly forgot our troubles and everything became brighter.

As our teacher for four years, she has come to understand us and we have grown to love her. To us, she is more than a teacher; she is a friend-one to whom we can tell our troubles and receive sympathy and solutions to our problems.

We, the Seniors of '52 dedicate this, our annual, to Mrs. Anne Salter, our teacher, counsellor, and friend.



3
52
113

373
Bea
1952



Glad you have been
pleasure to
Ann:

Jimmy I have great hopes for you. With your
determination I expect great things.
H. J. Leary



Principal's Message

I recall the year 1942 when this class of '52 came aboard the good ship Beaufort High and took its place with the other crew members for a twelve year voyage that took us into many ports. I recall, too, that the old ship was wrecked by fire February the fifth, nineteen forty-five and that it became necessary for us to be divided into groups and to be stationed at various points in the vicinity. Then the good people of this fine community decided to build us a bigger and better ship in order that we could continue our voyage. Many storms have crossed our course during this voyage, but you have stood them well. Your loyalty, co-operation and determination have been most helpful in this, your last voyage on this ship. I trust that you will re-enlist, will be assigned to a larger ship, will continue your voyage into the uncharted waters and will be able to say that the world has been made a little better by your having lived in it. When you have liberty you will be welcome to visit the old ship and point with pride to your new shipmates that your apprenticeship was on the good ship Beaufort High.

Faculty



MISS LENA N. DUNCAN



MISS GLADYS CHADWICK

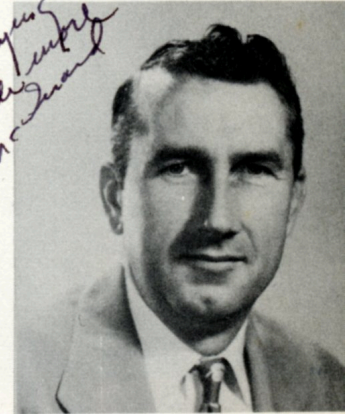


MRS. OLIVIA FLOYD

Jimmy, you're one sweet boy. We need your services again at M.Y.F. I'm looking forward to having you in my class some day. A little brilliant name suits R. Floyd

MR. T. H. MCQUAID

Good luck Jimmy. Hope you continue enjoying each other. I.H. McQuaid



MISS MARGARET THOMPSON

Jimmy, It's been a genuine pleasure having you as a student and knowing you in other capacities - Miss Thompson

MRS. MILDRED LAWRENCE

It has been sort of a "recapitulation" to be in school with another Whately after all these decades. I really enjoyed it. Mildred Lawrence



MRS. ANNE SALTER

MRS. GERALDINE BEVERIDGE

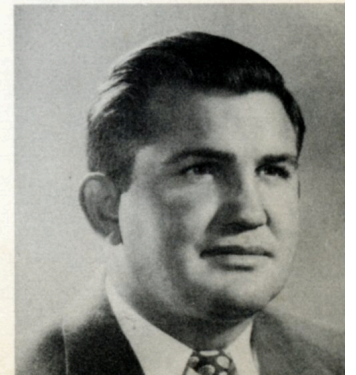


MR. DALE BROWDER

MISS MARY DICKENS

MR. JOHN EVANS

But Nick's Miss Dickens





Annual Staff

First row: Catherine Noe, Bobby Willis. Second row: Elizabeth House, Connie Lewis, Nancy Russell. Third row: Ann Hopkins, Mary Martin, Sheila Smith, Mary Haynes, Frances Taylor. Fourth row: Bobby Safrit, Shirley Springle, Bertha Davis, Edith Willis. Fifth row: Virginia Hassell, Andy Mason, Joan Chipman.

Editor-in-Chief - - - - -	CATHERINE NOE
Business Manager - - - - -	BOBBY WILLIS
Associate Editor - - - - -	CONNIE LEWIS
Associate Business Manager - - - - -	NANCY RUSSELL



Editor-in-Chief
CATHERINE NOE



Business Manager
BOBBY WILLIS

SENI



ORS

Senior Class Officers



President - - - - - GARY COPELAND
Vice President - - - - - EDITH ANN WILLIS
Secretary - - - - - -BERTHA DAVIS
Treasurer - - - - - -EDITH LEWIS

Class Flower - - - - - -Carnation

Class Colors - - - - - Green and White



Mascot

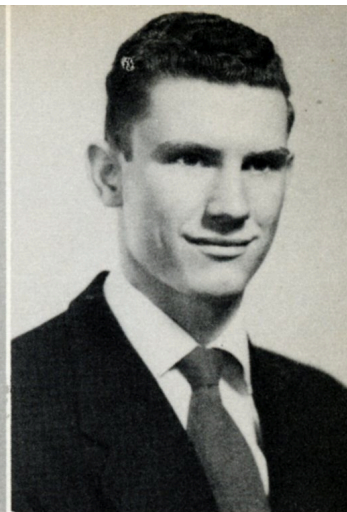
WILLIAM C. "BILL" WILLIS

NELLIE FLORENCE CANNON

FHA 1, 2; 4-H 1, 2, 3, 4, Secretary 4; Band 2.

GARY COPELAND

Beta Club 3, 4, Pres. 4; Newspaper Staff 2; Varsity Club 4; Football 2, 3, 4; Basketball 3, 4; Jr. Varsity 2; Marshall 1, 2, 3; Audubon Club 1; Boy's State 3; 4-H 1, 2; Student Council 1, 4; Class Pres. 3, 4; Vice President 1; Co-Captain Football 4; Senior Superlative; Patrolman 2, 3; Bus Driver 3, 4.



BERTHA DAVIS

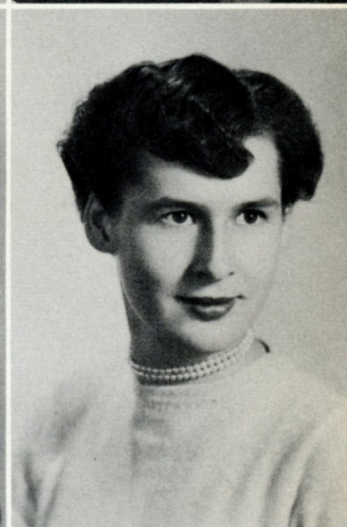
"Bert"

Glee Club 1, 2, 3, 4; Beta Club 3, 4; Tri-Hi-Y 2, 3, 4; Annual Staff 4; Student Council 2; Class Vice President 2; Class Secretary 4; Senior Superlatives.

JEAN DIXON

"Rabbitt"

FHA 1, 2; Beta Club 3, 4; Recreation Chairman 4; Tri-Hi-Y 3, 4; Vice Pres. 4; Newspaper Staff 3; Varsity Club 4; Secretary 4; Basketball 1, 2, 3, 4; Co-Captain 4; All Tournament 3; Band 1; Student Council 3; Senior Superlatives; Library Assistant 3, 4.



DONNIE DUDLEY

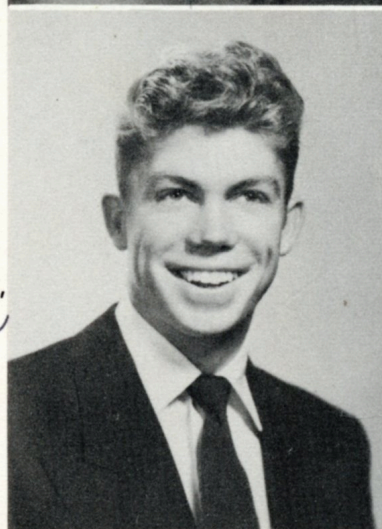
"Shiney"

Varsity Club 4; Beta Club 3, 4; Newspaper Staff 3; Baseball 1, 2, 3, 4; Band 3; Class Officer 3; Patrolman 1, 2, 3; Senior Superlatives.

IRIS MAE DUDLEY

"Irishmae"

FHA 1, 2; Glee Club 4; Band 1, 2, 3, 4; Secretary and Treasurer 3; Vice President 4; Class Poet 4.



LELA MAE FODRIE

"Dimples"

FHA 1, 2; Beta Club 3, 4; Annual Staff 4.

BETTY RUTH GARNER

"Penny"

4-H 1, 2; FHA 1, 2.



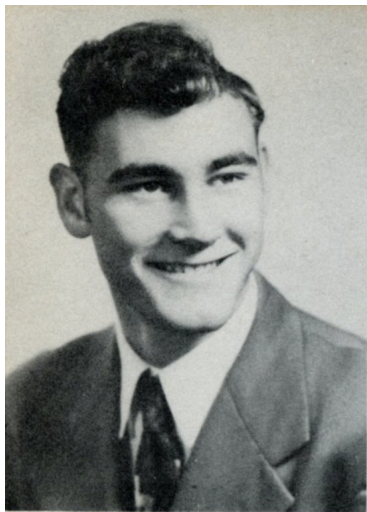
It's been swell knowing you. You're a sweet boy and have a blooming personality. Bertha.

You were real cute student mate - Love ya Jean

Sure will miss you! Old B. H. S. next year! Good Luck! Ammonia

Jimmy, may you have the best of luck ever and may the future hold much happiness for you. Lela

Lots of luck always Be good and stay as sweet as you are now.



WALLACE GARNER, JR.

"Junior"

Varsity Club 4; Baseball 4; Football 3, 4; 4-H 1, 2, 3, 4; Bus Driver 3, 4; Patrolman 1, 2, 3.



DOROTHEA GILLIKIN

"Squirt"

FHA 1, 2, 3, 4; Glee Club 4; Beta Club 3, 4; 4-H 1, 2, 3, 4; 4-H Award 2; Class Treasurer 1.



JANET GILLIKIN

"Jan"

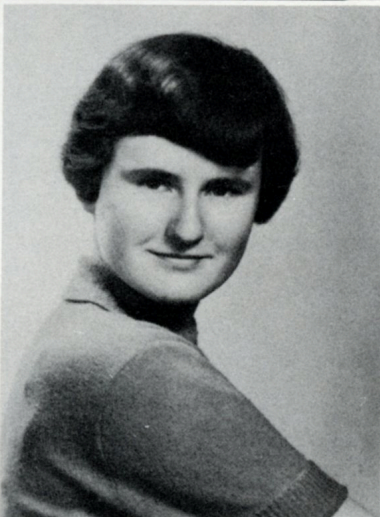
FHA 1, 2, 3, 4; 4-H 1, 2, 4; 4-H Award 1; Glee Club 4; Band 1.

Best of luck ever to a swell guy. Love ya Patsy

PATRICIA HARDESTY

"Patsy"

FHA 1, 2; Glee Club 4; Tri-Hi-Y 4; Varsity Club 4; Cheerleader 4; Senior Superlative; Class Grumbler 4.



MARY LILY HAYNES

"Mouth"

FHA 1, 2; Glee Club 1, 2, 3, 4; Glee Club Award 3; Newspaper Staff 4; Tri-Hi-Y 4; Reporter 4; Varsity Club 4; Beta Club 3, 4; Library 3, 4; Annual Staff 4; Cheerleader 4; Senior Superlative.

Take care of B.H.S. - I'll miss it. Your smile and cheerful face has made my days a little happier here.

BOBBIE JEAN HERRING

"Bobbie"

FHA 1, 2, 3, 4; Secretary 2; County Reporter 4; Beta Club 3, 4.

Best of luck. Bobbie



Best of Luck, Mary



ANN ELIZABETH HOPKINS

"Hop-Skittel"

Beta Club 3, 4; Treasurer 4; Newspaper Staff 3, 4; Audubon Society 1; Annual Staff 4; Student Council 4; Essay Award 3.

Jimmy best of luck to a swell guy. Love ya Baby

ELIZABETH HENDRICKS HOUSE

"Baby"

FHA 1, 2; Glee Club 1, 2, 3, 4; Beta Club 3, 4; Tri-Hi-Y 2, 3, 4; Vice President 3; Sergeant-At-Arms 4; Varsity Club 4; Senior Superlative; Student Council 1; Annual Staff 4; Basketball 1, 2, 3, 4; All County 3.



CONSTANCE KIRK LEWIS

"Connie"

FHA 1, 2; Parliamentarian 2; Glee Club 3, 4; Class Secretary 3; Tri-Hi-Y 3, 4; Program Chairman 4; Newspaper Staff 2, 3, 4; Editor 4; Marshall 3; Annual Staff 4; Band 1; Majorette 3, 4; Beta Club 3, 4; Secretary 4; Senior Superlatives.

Jimmy you won't have many worries if you've got what it takes and love - Connie



EDITH LEWIS

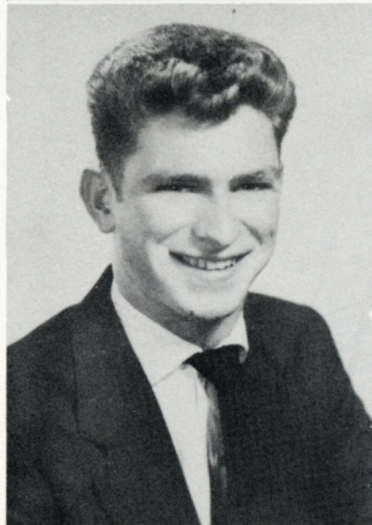
"Edie"

FHA 1, 2, 3, 4; County Vice President 3; County President 4; Local Parliamentarian; Glee Club 3, 4; Beta Club 3, 4; Student Council 4.

To one swell guy! Love, Edith

GENE F. LEWIS

Student Council 2; Newspaper Staff 2; Cheerleader 2; Beta Club 3, 4; Football 3, 4; Blocking Award 4; Varsity Club 4; Senior Superlative.

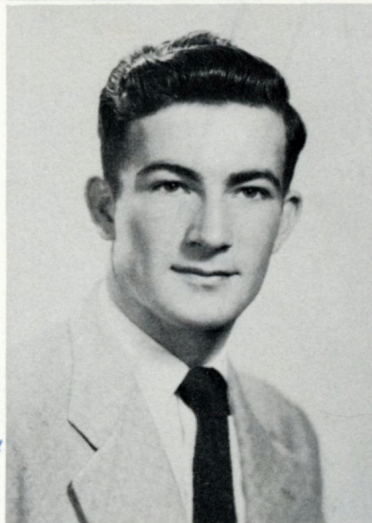


PATRICIA ANN LEWIS

"Snake-Eyes"

FHA 1, 2.

To Good Luck Jimmy Crickett from John Lynch



JOHN CHAPLAIN LYNCH

"Johnnie"

Glee Club 4; Reporter 4; Beta Club 3, 4; Newspaper Staff 2; Varsity Club 2, 3, 4; Vice President 3; Baseball 1, 2, 3, 4; Football 3, 4; Captain 3, 4; Outstanding Player Award 3, 4; All-Eastern Team 4; Basketball 1, 2, 3, 4; Co-Captain 3; Captain 4; Valuable Player Award 3; All County 3; Boy's State 3; Band 1, 2, 3, 4; Vice Pres. 3; Student Council 2, 3, 4; Sec. 2; Vice Pres. 3; Pres. 4; Best All-Round Boy Award 3; Patrolman 2, 3; Senior Superlatives.

MARY OLIVE MARTIN

"Slim"

4-H 1, 2, 3; Pres. 2; Song Leader 1; County 4-H Council Pres. 2; Danforth Foundation Award 4; FHA 1, 2, 3; Newspaper Staff 2, 3, 4; Student Council 2, 4; Glee Club 2, 3, 4; Annual Staff 4; Beta Club 3, 4; Class Testator; Senior Superlative.

Best wishes Mary Martin



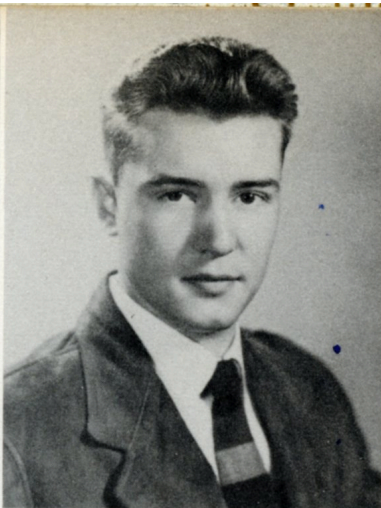
BARBARA MASON

FHA 1, 2; 4-H 1; Basketball 1, 2, 3.

JANE MASON

FHA 1, 2; Glee Club 1, 2, 4.

To a sweet guy with a charming personality. Barbara



gimmie, you will go far with all your intelligence.
 CATHERINE NOE
 "Mama" *Good luck & remember me*
 FHA 1, 2; Band 1, 2, 3, 4; Band Club Organizer 3; Pres. 3; Glee Club 4; Student Council 2, 4; Treasurer 4; Tri-Hi-Y 3, 4; Beta Club 3, 4; Vice Pres 4; Associate Editor Newspaper 3; Girl's State Representative 3; Senior Superlatives; Yearbook Staff Editor 4; Library Assistant 3, 4.

Marion Noel Jr.

MARION TOLAR NOE, JR.
 "Salt"
 Football 3; Audubon Club 1; Hall Patrolman 2, Senior Superlative; House and Grounds Committee 3.



ELIZABETH ANN NORCOM
 "Rags"
 FHA 1, 2, 3; Glee Club 4.

MARY ELLEN NORCOM
 "Muscles"
 FHA 1, 2, 3; Tri-Hi-Y 4; Basketball 1, 2; Majorette 4; Substitute 3; Student Council 3.



JOYCE LEE NORRIS
 FHA 1, 2, 4; Beta Club 3, 4; 4-H Club 1, 2, 3, 4; Band 1.

MARTHA MAE PAKE
 FHA 1, 2, 3; Beta Club 4; Band 4; 4-H Club 1, 2, 4; Library Assistant 4.



JAMES EDMUND PARKIN
 "Jimmie"
 Glee Club 1, 2, 3, 4; Newspaper Staff 2, 3; Sports Reporter; Assistant Business Manager 3; Varsity Club 2, 3, 4; President 4; Student Council 2; Prom 4; Basketball 2, 3, 4; Baseball 2, 3, 4; Football 3, 4; Hall Patrolman 1, 2, 3; Audubon Society 1; Class Treasurer 2.

MARILYN RUTH PELLETIER
 (Entered B. H. S. in 1951)

WARD TURNER POWELL

"Toot Woot"

ta Club 3, 4; Varsity Club, Vice President 4;

seball 2, 3, 4; Football 3, 4.

PANCY DUFFY RUSSELL

fA 1, 2; Glee Club 2, 3, 4, Accompanist 3, 4;

es. 4; Beta Club 3, 4; Program Chairman 4; Tri-

-Y 2, 3, 4; Sec. 3; Newspaper Staff 4; Business

anager; Varsity Club 4, Treasurer; Basketball

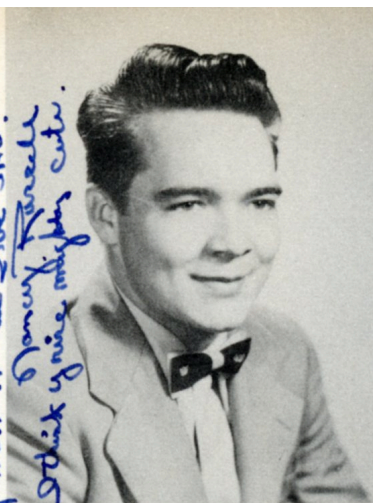
2, 3, 4; Co-Captain 4; Superlatives 4; Girls State

Class Sec. 1; Class Pres. 2; Activities Medal

Student Council Treasurer 3; Annual Staff 4;

brary Assistant 3, 4.

*Jimmy, we really had a lot of fun
at the Student Council. Didn't
get their hopes up, you have an award
from the Student Council.
Pancy Russell
I think you're a pretty cute.*



ROBERT W. SAFRIT III

"Bobby"

Varsity Club 4; Football 3, 4; Audubon Society 1;

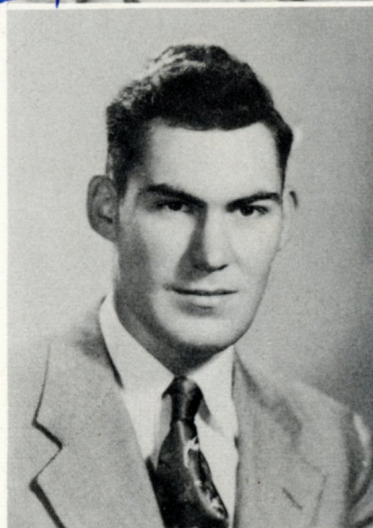
Annual Staff 4; Superlative 4; Student Council 1,

2, 3.

CYNTHIA SKARREN

"Cindy"

Majorette 4; FHA 1, 2, 3, 4.



JAMES GRADY SMITH

"Jim"

Varsity Club 4; Football 2, 3, 4; Audubon Society

2; 4-H Club 2; Patrol 3; Superlative 4; House and

Grounds Committee 3.

SHEILA KAY SMITH

FHA 1, 2; Glee Club 1, 2, 3, 4; Newspaper Staff 2,

3; Annual Staff 4; Marshall 1, 2, Chief 3; Class

Pres. 1; Superlative 4; Beta Club 3, 4.

*you're a good
boy Jimmy. Good luck*

Jim

*The best of luck to a swell
guy!*

Sheila



*Jimmy, you are a wonderful
boy and kids wishing you all
the luck in the world.*

SHIRLEY SPRINGLE

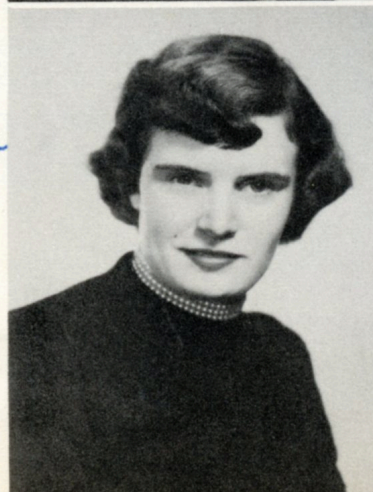
"Pat"

FHA 1, 2, 3; Pres. 2; Glee Club 4; Beta Club 3, 4;

Tri-Hi-Y 3, Pres. 4; Annual Staff 4; Student

Council 2, 4; Superlative 4; Class Giftorian 4.

*Love ya,
Shirley Springle*



FAYE ELLEN TAYLOR

Glee Club 4; Beta Club 3, 4; FHA 1, 2; 4-H Club

1, 2, 3; Bus Driver 3, 4; Student Council 1; News-

paper Reporter 1, 2, 3.



FRANCES LEE TAYLOR

Entered B.H.S. in 1950; Glee Club 4; Annual Staff 4.



HARRY TAYLOR

"Bucket"

4-H 1, 2, 3, 4; Bus Driver 3, 4; Patrolman 1, 2, 3



LORETTA TAYLOR

FHA 1, 2, 4; Band 1; 4-H 1, 2, 4; Library Assistant 4.



SHIRLEY TAYLOR

FHA 1, 2, 3; Glee Club 4; 4-H 1, 2, 4, Sec. 3; Newspaper Reporter 1.



EDITH ANN WILLIS

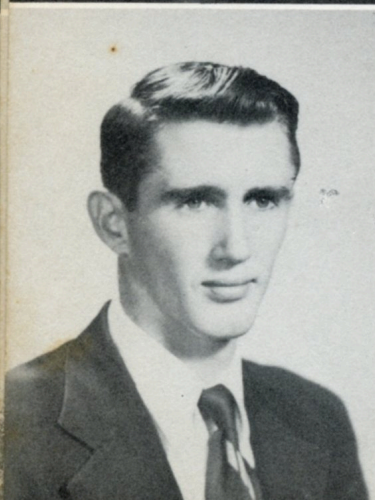
"Mildred"

FHA 1, 2; Glee Club 1, 2; Beta Club 3, 4; Newspaper Staff 4; Varsity Club 4; Annual Staff 4; Sec. 2; Treas. 3; Vice-pres. 4; Historian 4; Girl's Basketball Manager 4.



MARIE WEBB

FHA 1, 2; Glee Club 1, 2, 3, 4; Tri-Hi-Y 4; Student Council 3; Majorette 3, 4; Superlative.



*The best of wishes to a swell guy.
Barry*

MAX BARRY WILLIS

Student Council 4; Football 4; Entered B.H.S. in 1951; Harkers Island; Basketball 1, 2, 3; Baseball 1; Marshall 3; 4-H 1.



KATHRYN WILLIS

"Barefoot"

FHA 1; 4-H 2, 3, 4.

PIERSON WILLIS

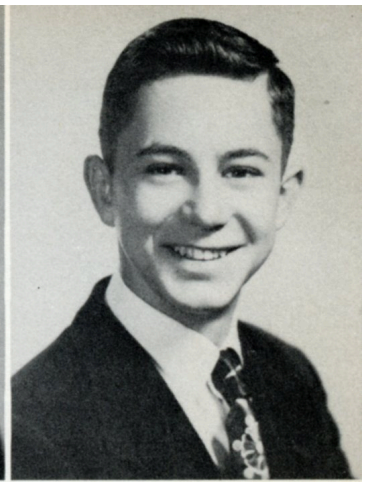
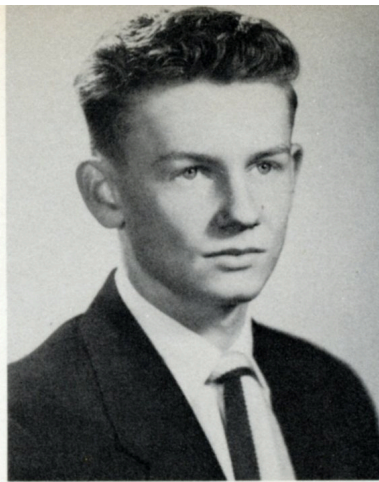
"Pier"

Basketball 3, 4; Junior Varsity 2; Baseball 2, 3, 4;
Football 3, 4; Varsity Club 4; Superlatives 4;
Patrolman 1.

ROBERT EUGENIS WILLIS

"Bobby"

Band 2, 3, 4; President 4; Student Council 1, 3;
Beta Club 3, 4; Annual Staff 4; Business Manager
4; Audubon Society 1; Bus Driver 4; Subt. 3;
Patrolman 2, 3.



"JOY"

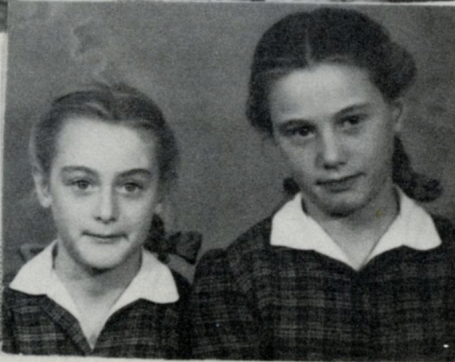
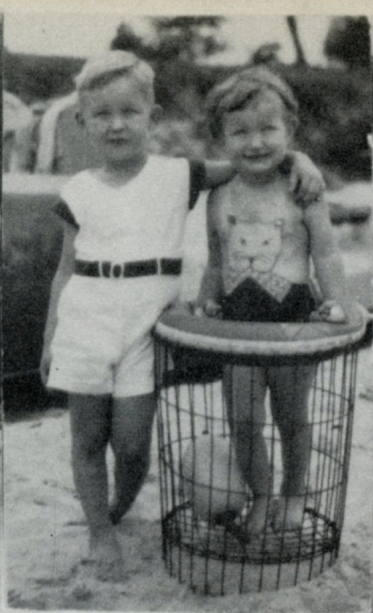
A ship! A ship!
Ahoy! Ahoy !
"52" has named it "Joy."
The mast arose, the anchor lifted,
The wind blew north and then it shifted
South! Ahoy! the band played on;
The class of "52" is born.

A big wide world we have to cross,
Many a hardship, many a loss,
To conquer the foes that lie ahead
Wrecking the future, we're to spread
Across the world, to wide open spaces;
To wipe the sorrow from terror stricken faces.

The sea of adventure--straight ahead!
By the hand of faith the ship was led.
Achievement we're to have with pleasure
To value through life, like a guarded treasure.

The wind breezed up and the storm gales blew,
The rough seas rocked but we came through''
Breathing a prayer for a mighty fort,
As we slowly, softly, drifted in port.

Iris Mae Dudley



Class History

The school year of '48-'49 started on a September morning that will be remembered for many years, for this was our first day in high school.

For the first week, we were busy trying to find our way around, because we silly, green freshmen had the strange idea that changing classes meant simply walking down the hall until we came to a room in which we would like to have a class. The upperclassmen had fun making sport of our ignorance until we realized our mistake and settled down to regular routine.

After becoming accustomed to being the "underclassmen of underclassmen" and enduring many initiations, we were prepared to take whatever might come along. Nothing that happened seemed strange in the life of a freshman.

From various parts of the county came several new members to join our class and to participate in our many activities and clubs. Most of the girls were kept busy by either Home Economics, FHA, or being waitresses at the Junior-Senior Banquet, while the boys were trying out basketball and band.

Under the guidance of Mrs. Salter, Mrs. Beveridge, and our class president, Sheila Smith, we gave the seniors a very successful trip on the "Hatteras" up the Inland Waterway.

Then came the tenth grade. It seemed that we were excluded from almost every activity, Although it was quite a disadvantage to be neither an "under nor upperclassman," we were allowed the privilege of "helping the new freshmen get on their feet." The playing of football for the first time in ten years was the big thrill of our sophomore year. We all rallied to its support.

Near the end of our second year in high school Miss Chadwick, Mr. Hawkins, and our president, Nancy Russell helped the class to entertain the seniors with a hayride and weiner roast on Atlantic Beach.

From the very first day of our junior year our thoughts all centered around the approaching banquet. We said it was to be the greatest yet, and it was. Mr. McQuaid, Mrs. Floyd, and our president, Gary Copeland toiled many nights in the gymnasium with the class decorating and preparing for this event. No onethere will ever forget entering through the dragon's mouth, seeing the beauty of the temple, the little red bridge, the lovely scenic paintings on the wall, and the rickshaw--a veritable rainbow land--our Oriental Garden!

After the banquet was over, our thoughts turned to the coming year when we would be seniors. On the last day of our junior year, we marched down through the balcony and out the front door. At long last, after eleven years of waiting, we were seniors!

But the glory of being seniors didn't really start until September sixth, 1951. Now conversation was about the annual, the rings we would soon get, selecting our invitations, and above all, the Washington trip. The first few days were exciting ones. Then we realized it was the beginning of the end for us. There was a mixture of emotions about this being our last year of school. Some were glad that they would not have to come back next year, while others were thrilled, yet sad. Thrilled to get back and be with their friends again; sad to think that before long, they would be leaving their Alma Mater.

This, our last year of school is proving to be not only our best, but our busiest. When we complete this work and go out to make our own fortunes, time will tell who will be a success and who will be a failure. But we must all keep in mind that "It isn't the gale, but the set of the sail that determines the way we go."

Last Will And Testament

We, the seniors of '51-'52, being of sane mind and sound body do hereby declare this to be our last will and testament. Before our final departure we wish to bestow our most cherished and most valuable possessions on our beloved faculty and under-classmen. These benevolences are bestowed upon the recipients without restriction, without prejudice, without coercion, and with the wholehearted affection of the said class.

ARTICLE I

To our faculty and principal, we leave the deep satisfaction of peace and tranquillity----at our departure this is bound to exist for them---. Since we have not expressed our love, appreciation, and gratitude for their constant thoughtfulness, guidance, and wholehearted co-operation throughout the past years---we do now bequeath them an undying place in each and every heart.

ARTICLE II

To the Juniors, we leave our well earned senior privileges and our places in the senior classrooms with two exceptionally wonderful advisors, Miss Lena Duncan and Miss Gladys Chadwick.

ARTICLE III

To ALL UNDER-CLASSMEN from this time forth, the senior class leaves its beloved school for them to love, cherish, and protect!

ARTICLE IV

Elizabeth House bequeaths her curly hair to Bobby Dennis; Connie Lewis her sophomore history book to Larry Moore. Jane Mason solemnly leaves Harry Truman's picture to Miss Duncan for her to cherish forevermore; John Lynch wills his executive ability to Virginia Hassell; Gene Lewis his "Mirror" to B.G. O'Neal.

To Johnny O'Lund, Nellie Cannon gives her love for English; Betty Garner bequeaths her flirting ability to Faye Mason; Lela Fodrie her "crew cut" to Virginia Davis. Jean Dixon generously bestows her basketball ability to Mary Low Owen; Iris Dudley wills her shapely figure to Patricia Willis; Patsy Hardesty her chewing gum to Miss Duncan.

Mary Haynes bequeaths her cheering ability to Inez Woodard; Edith Lewis her tallness to Jackie Dickinson. Bobbie Jean Herring reluctantly leaves Edwin Becton to the mercy of the B. H. S. girls. Jimmy Parkin regretfully must leave his ability to get his work done at the last minute to Lewis Woodard.

To his brother, Henry Safrit, Bobby gives his football uniform. Shirley Taylor willingly gives her love for writing English themes to Clyde Bell; Wilma Cummings is given Marie Webb's disarming smile; Martha Pake bequeaths her shapely legs to Colleen Kuthrie. Dathryn Willis gives her unique ability to chew gum to Sally Taylor.

Nancy Russell bequeaths her spare time to anyone who wants it; Pierson Willis leaves his reckless driving to anyone who wants to die young. To Ted Spivey, Bobby Willis leaves his love for arguing; Ann Norcom her long blond hair to Phyllis Pake. Joyce Norris wills her typing ability to Verna Carraway; Marilyn Pellitier her "many dates" to Nancy Whitehurst. Edward Powell bequeaths his ability to reach classes on "time" to Hugh Mason; Cynthia Skarren her Majorette uniform to Vicky Taylor.

Faye Taylor leaves "Susie," bus fourteen, to Doris Temple; Harry Taylor his bus license to James Taylor. Berry Willis leaves his "nose guard" to Ronnie Quidley. Wallace Garner his beard to Johnny Betts; Janet Gillikin bequeaths her quiet manner to Danny Bates; Bertha Davis her charming personality to Leona Davis. To Donald Noe, Gary Copeland leaves his curly hair; Dorothea Gillikin her "Bettie" brogue to Janice Keller. Donnie Dudley's record as a speed demon is given to Barbara Goodwin; Patricia Lewis her long golden locks to Ann Owen. To Billy Eudy, Marion Noe leaves his pretty brown eyes; Ann Hopkins leaves Patricia Daniels the privilege of using the balcony when she becomes a senior. To Miss Dickens, Barbara Mason leaves her wit.

Loretta Taylor leaves her height to Virginia Hill; Edith Ann Willis her delightful grin to Jeanne Jenkins; Ellen Norcom's "twirling" ability to Molly Hopkins. Jim Smith wills his weight and football ability to Herby Prytherch; To Anita Copeland, Frances Taylor bequeaths her ambition to go to Carolina; Catherine Noe her winning personality to Bitsy Brooks. To Joan Chipman, Sheila Smith wills her sincerity and intelligence; Shirley Springle her neatness of attire to Sue Gibbs. To Miss Chadwick, Mary Martin gives her solemn promise not to interrupt English Classes next year.

To our efficient and co-operative friend and janitor, Albert, we leave the fond affection and the hope that the incoming seniors will keep cleaner classrooms and will give better co-operation. We also leave our sincere appreciation for his many favors during our high school days.

We do hereby appoint Brady, our beloved smoking room custodian, to be our executor and see that our wishes are carried out in the spirit as well as the letter of the law.

In Witness where of. I, the testator, do hereunto set my hand and seal the 29th day of May, 1952.

Signed, sealed, published and declared by said class in the presence of Mr. Leary to be its last will and testament.

Witness: Gary Copeland - - - - - President

Edith Willis - - - - - Vice President

Bertha Davis - - - - - Secretary

Edith Lewis - - - - - Treasurer

Marv Martin - - - - - Testator

Satire

NELLIE CANNON on her hand, Wears a diamond
(lucky man!)

GARY COPELAND, with brilliant mind, Another like
him would be hard to find.

BERTHA DAVIS has a diamond too. She's an angel on
earth and just as true.

JEAN DIXON known as "Rabbitt," or "Bean," Is the
liveliest gal we've ever seen.

DONNIE DUDLEY, best-dressed boy, Is a certain
someone's pride and joy.

IRIS DUDLEY aspires to be A band director-soon
we'll see.

LELA FODRIE, shy and demure, Can "bowl, 'em"
over you may be sure.

BETTY GARNER is expert as everyone knows, When
it comes to making her own pretty clothes.

WALLACE GARNER has vigor and vim. "Uncle Sam"
can sure use him.

DOROTHEA GILLIKIN is really cute, And believe us,
she sho ain't mute!

JANET GILLIKIN is such a sweet gal, If you're friendly
to her, then she's your pal.

PATSY HARDESTY, cute and petite, Makes any gar-
ment look trim and neat.

Of MARY L. HAYNES you need not be afraid. She is
always willing to come to your aid.

BOBBIE J. HERRING is a "slick chick." Tell us, Bobbie
what's the trick?

ANN HOPKINS plans a nurse to be, A good one she'll
make we all agree.

ELIZABETH HOUSE, better known as "Baby", Is a good
sport and we don't mean maybe.

MARY MARTIN (Mrs. Kirkman now), Is our contest
winner. She has "know how".

CONNIE LEWIS, a superb majorette, Is a high-stepping
prancer you may bet.

EDITH LEWIS is a gem of a girl. If we were all oysters,
then she'd be the pearl.

GENE LEWIS (that marvelous physique), Is a lady
killer any day of the week.

PATRICIA LEWIS' long brown hair Reminds us of
some princess fair.

JOHNNY LYNCH, best-all-around, Is the most popu-
lar boy in town.

BARBARA "BABS" MASON has a sweet personality, And
she's always full of vim and vitality.

JANE MASON (she's a honey), Would be happy even
without money.

CATHERINE NOE, the dependable, works with zest.
And does all she undertakes her best.

MARION NOE's beautiful brown eyes, Have caused
girls to break forth with sighs.

ANN NORCOM is so pleasant and kind, That she rates
a high score in anyone's mind.

ELLEN NORCOM, Whose twin sister is Ann, With her
sweet personality can win any man.

JOYCE NORRIS' dimples so cute, Have caused other
hearts to become her heart's loot.

MARTHA PAKE is very vivacious, And as a hostess
she's also gracious.

JIMMIE PARKIN, The great Lover, is another B. M.
O. C. He might let you read his letters for an infinitesi-
mal fee.

MARILYN PELLETIER joined us late, Yet she is the girl
that will always rate.

EDWARD POWELL is usually late, But when he comes
in you can watch out, mate!

NANCY RUSSELL's first love is music, She has loads
of talent and knows how to use it.

BOBBY SAFRIT is the class politician. He may become
president while we're still wishin'.

CYNTHIA SKARREN may be a big flirt, But she's a
pal whether you wear a skirt or a shirt.

SHIRLEY SPRINGLE was voted best dressed, She's also
a good sport and does her best.

JIM SMITH is our senior class clown, He'll make you
laugh til you roll on the ground.

SHELIA SMITH--the intelligent kind, Who in any-
one's language is hard to find.

FAYE TAYLOR has such a graceful gait, And pleasing
way, she's sure "date bait."

FRANCES TAYLOR's ambition is to be a nurse, To
make people well and keep them from getting worse.

HARRY TAYLOR, the future farmer lad, Will, no
doubt, be prosperous and we'll be glad.

LORETTA TAYLOR, tall and fair, Just let her know and
she'll be there.

SHIRLEY TAYLOR should be a good writer, 'Cause her
letters to her guy don't get lighter.

MARIE WEBB has such a beautiful voice, A singing
career should be her choice.

BARRY WILLIS is an easy-going guy, If he doesn't
succeed, we won't know why.

BOBBY WILLIS is a born business man, He will make
good if any one can.

EDITH ANN WILLIS, the class wit, Is always willing
to do her bit.

KATHRYN WILLIS" witty ways, Will endear her to us
all our days.

PIERSON WILLIS will surely shout, He will be so glad
when school is out.



Best Personality
Best All-Round



Most Talkative



Prettiest Hair



Prettiest Eyes



Cutest



Most Talented



Best Physique
Best Figure



Most Bashful



Most Likely to Succeed



Most Popular
Most Athletic



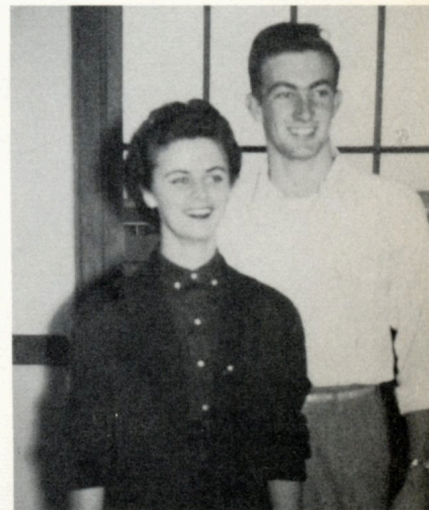
Biggest Eaters



Wittiest



Neatest
Best Dressed



Prettiest
Best Looking



Best Sports

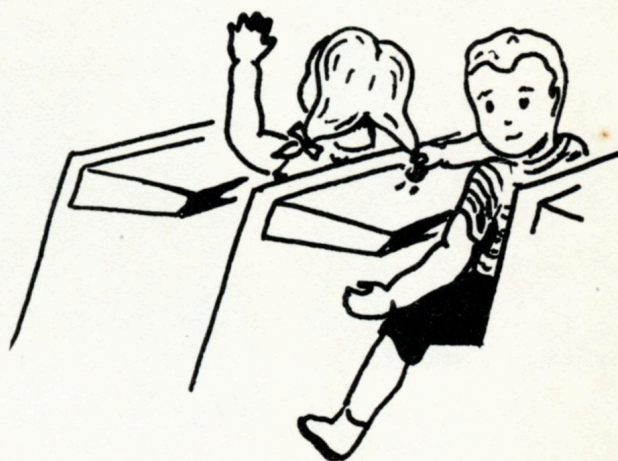


Most-in-Love

Not Shown
Most Studious-GARY COPE-
LAND, SHELIA
Friendliest-JEAN DIXON,
JIMMY PARKIN
Best Citizens-CATHERINE
NOE, GARY COPELAND
Most Dependable-CATHERINE
NOE GARY COPELAND
Most Outstanding-CONNIE
LEWIS, GARY COPELAND
Best Dancers-MARIE WEBB,
JOHN LYNCH
Biggest Flirts-CONNIE
LEWIS, PIERSON WILLIS



UNDERCLASSEMEN



President
GORDON DAVIS

Vice President
BARBARA GOODWIN

Secretary
CORRINNE SCUR-
LOCK

Treasurer
BEULAH EUBANKS



Junior Class Officers

A JUNIOR SPEAKS

At last we have reached the year in high school that is topped only by the senior year. We are working hard to make a success of this year, and, above all, a success of the most important event of our high school lives the Junior-Senior Banquet.

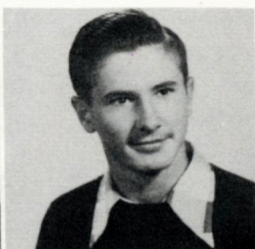
We are working hard too, at all of the many extracurricular activities so that we will be able to stand up before the greatest test of all--our Senior Year. We've always looked up to Seniors, but now we regard them as close friends because we are so near being seniors ourselves. We look to them for guidance and leadership, and we sincerely hope that we, the future seniors of 1952-53, will be as successful as this year's senior class has been.



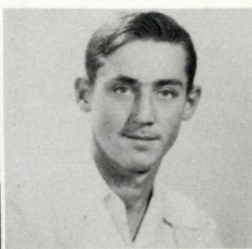
EDWIN
BECTON.



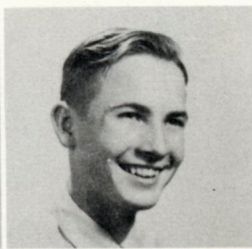
PATSY
BECTON



CARL
BELL



CLYDE
BELL



JOHNNY
BETTS



BITSY
BROOKS



MARGARET
BRYANT



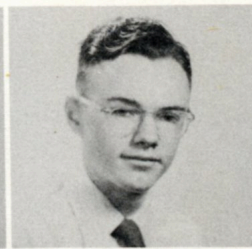
VERNA
CARRAWAY



LOUISE
CHADWICK



JOAN
CHIPMAN



ROY
CLEMMONS



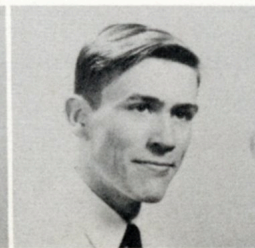
WALLACE
CONNER



WILMA
CUMMINGS



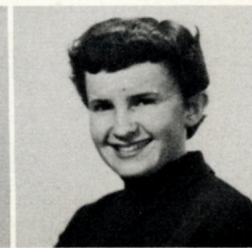
THELMA
DARLING



GORDON
DAVIS



JACKIE
DICKINSON



PEGGY
DIXON



CHRISTINE
DUNN



BILLY
EUDY



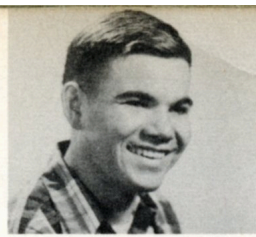
BEULAH
EUBANKS



GUS
FARLOW



JOAN
GARNER



FRANK
GILLIKIN



BARBARA
GOODWIN



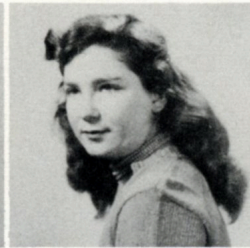
VIRGINIA
HILL



MOLLY
HOPKINS



CAROL
JONES



JULIA
KELLY



KAY
LEWIS



WILLIAM
LONGEST



ANDY
MASON



FAY
MERRELL



JOYCE
MERRILL



JIMMY
MODLIN



ANN
NOE



JOHNNY
OLUND



B.G.
O'NEAL



ANN
OWEN



MINNIE
PAKE



PHYLLIS
PINER



LOLA
PRATT



RONNIE
QUIDLEY



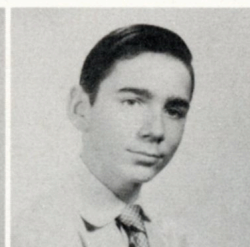
CORRINNE
SCURLOCK



JACKIE
SIMPSON



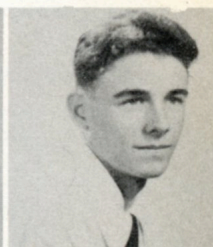
BOBBY
SMITH



TED
SPIVEY



DONALD
TAYLOR



JAMES
TAYLOR



JEAN
TAYLOR



VICKIE
TAYLOR



NELLIE
WARD



ERLENE
WILLIS



ELIZABETH
WOODARD



LEWIS
WOODARD JR.

President
Buddy Smith

Vice President
Street Whetherington
(Not Shown)

Secretary
Grace Whitehurst

Treasurer
Hugh Mason



A SOPHOMORE SPEAKS

Our lowly days were over, and with a "know-it all" attitude and a superior air, the Sophs gaily took a delight in chiding and teasing the Freshmen. After the trials and troubles of our Freshman year, we were ready to settle down to a more systematic schedule. Now we began to study.

It wasn't "all work and no play" though. We attended the football games, dances, basketball games, and other school activities. The Sophomores shone this year by having leaders in practically all activities. Our class of sixty-six students boasts twenty-one glee club members, nine 4-H members, nine band members, as well as those members in many other organizations. In thinking of our Sophomore Year a number of activities high-light our memories; money-raising parties, our blood and thunder chapel programs, and spring plans in honor of the seniors.

Although it may not seem to others as an exciting and eventful year, to us it has certainly been a necessary year. Because--if we hadn't been Sophomores how could we be Juniors?

*To the tall, dark,
handsome, lover
of high school I
wish the very best
luck. "Love ya"
Doris*



Donald
Austin



Fay
Basden



Lydia
Blake



Carol
Cole



Anita
Copeland



Patricia
Daniels



Swanna
Darling



Bobby
Davis



Shirley
Dudley

Jackson
Edwards

Vonda
Emory

Donald
Fulcher

Frances
Fulcher

Sue
Gibbs

Horace
Gillikin

Sara
Goodwin



Evelyn
Graham

Coleen
Guthrie

Barbara
Harris

Sadie
Harris

Billy
Hudgins

Curtis
Josey

Janice
Keller

Wayne
King



Iva
Lawrence

Marie
Lawrence

Helen
Lee

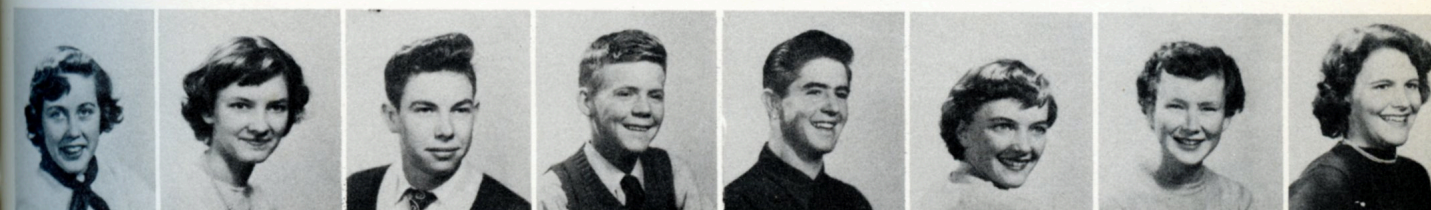
George
Lewis

Kerry
Lewis

Bobby
Martin

Hugh
Mason

Judy
Mason



Lou Ann
Mason

Darlene
Matthews

Fred
Merrill

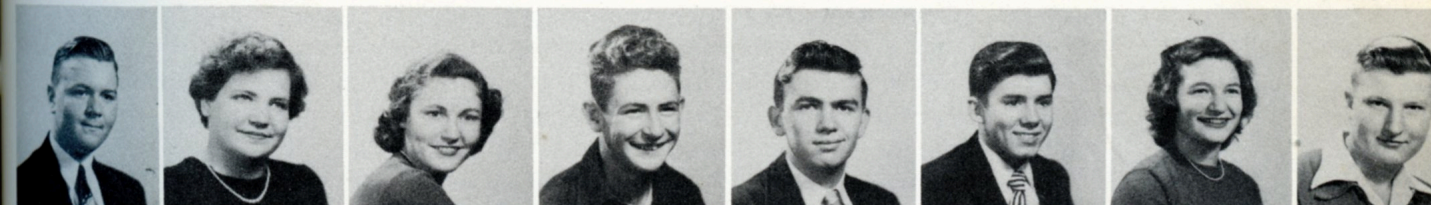
Walker
Moore

Earl Mack
Noe

Mary Lou
Owen

Phyllis
Pake

Emma
Perry



Herbert
Prytherch

Jane
Robinson

Marie
Robinson

Connie
Sabistan

Malcolm
Sabistan

Allen
Smith

Inez
Smith

Gerald
Taylor



Sallie
Taylor

Doris
Temple

Jerry
Thomas

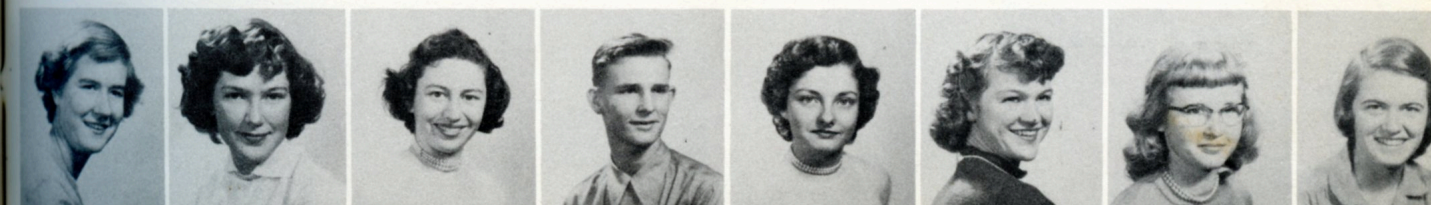
Elzie
Tosto

Street
Wetherington

Grace
Whitehurst

Nancy
Whitehurst

Ruth
Whitehurst



Lora Lee
Wiggins

Jessie
Wilkins

Annie Louise
Willis

Jimmy
Willis

Joyce
Willis

Kay
Willis

Patricia
Willis

Inez
Woodard

Freshmen

President

Gehrmann Holland

Vice President

Faye Mason

Secretary-Treasurer

Barbara Piner



*Jimmy,
You little
ole thing you. It's
sure been nice having
you in all my classes. and
I hope I can continue the next
three years.
I wish
you lots of
luck in anything
you undertake.*

A FRESHMAN SPEAKS

As we begin our journey through high school we are trying to establish ourselves in the minds of the upper-classmen and teachers as one of the finest ninth grade classes ever.

We may be a small class, with only twenty seven girls and thirty three boys, but in past years this has proved a help rather than a drawback. This year, because of our many talents, we have mobbed the activities. We boast fifteen band members, ten glee club members, twenty three members of the F. H. A., four newspaper reporters, and twenty athletes. We are very proud of a few of our boys who made the football squad.

Mrs. Beveridge and Mrs. Salter are our understanding home room teachers and our class officers are Gehrmann Holland, President; Faye Mason, Vice President; Barbara Piner, Secretary-Treasurer; Jeanne Jenkins, Reporter.

We are looking forward to our future years in high school with the hope that they will be as full of thrills and enjoyment as our first year has been.

Love you lots'

XXX's

Leona "Lee"

(It ain't hard)

*Jimmy,
I wish you the
best of luck
James "Harvey"
"Pop"*

*To a good friend
lots of luck.
Luan Ladwin*



James
Alligood

Doris
Avery

Harmon
Bennett

Graham
Bradshaw

Christine
Bratcher

Mary
Buttry

Joel
Cannon

Mary
Chadwick



Julia
Congleton

Jerry
Conway

Ted
Conway

George
Courtney

Leona "Dee"
Leona
Davis

Virginia
Davis

Barbara
Dennis

Jessie
Dixon



Stephen
Dudley

Bruce
Edwards

Gerald
Gaskill

Martha
Gibbs

James
Gillikin

Norvie
Gillikin

Thomas
Gooding

Ivan
Goodwin



Bobbie
Guthrie

Geneva
Hardesty

Charlene
Harrell

Virginia
Hassell

James
James
Harvey

Patricia
Herring

Ann
Hill

Gehrmann
Holland



James
Holland

Marie
Hunnings

Jeanne
Jeanne
Jenkins

Ada (me)
Ada Mae
Lewis

Billie Jean
Lewis

Patty Jean
Lewis

Faye
Mason

Herbert
Mason



Mildred
Mason

Larry
Moore

J.
Murphy

Charles
Pake

Dorothy
Pake

Barbara
Piner

Murry
Pittman

Clarence
Rhue



Henry
Safrit

Andrew
Searle

Avery
Smith

Etta
Taylor

Jimmy
Wheatley

Wayne
Whitehurst

Archie
Willis

Harold
Willis



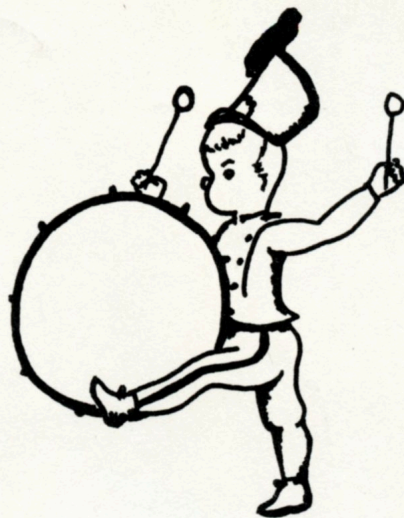
First row: Roger Bell, Jerry Willis, Sylvia Harrell, George Martin, Jr., Sterling Chadwick, Pee Wee Par-kin, Lois Stallings, Kenneth Swain, Jan Goodwin, Jimmy Davis, Lurea Smith, Henry Eubanks, David Bell. Second row: Nick Smith, Peggy Williams, Bobby White, Sara Piner, John Miller, Agatha Gillikin, Donald Small, Lois Cannon, Mildred Johnson, Elizabeth Leary, Lewis Iverson. Third row: Terry Nance, Nina Kirk, Flynn Golston, Robert Potter, Audrey Garner, Elisha Sanderson, Shirley Piner, James Graham, Bonnie Brin-son, Mr. John Evans.

Eighth Grades

First row: Roy Thomas Carraway, Mary Lou Gaskill, Jamie Norris, Ann Spivey, Jimmy Murphy, Dorothy Jarman, Johnny Simpson, Shelba Jean Laughton, Richard Lewis, Bertha Dixon, Terry Equals. Second row: Johnise Hardesty, Bobby Griffin, Annette Merrill, Jimmy Potter, Clyda Ruth Taylor, George Gooding, Alene Smith, Bruce Congleton, Kay P. Prytherch, Marvin Small, Glenda Gillikin, Mrs. Evans. Third row: John Basden, Joyce Chadwick, Ralph Eubanks, Paula Jones, Mary Congleton, Richard Merrill, Jean Pittman, Tommy Willis, Irma Cannon, Robert Swain, Margie Lee, Edward Willis, Jimmy Owens.



A
C
T
I
V
I
T
I
E
S





Student Council

First row: Gordon Davis, John Lynch, Catherine Noe, Inez Woodard. Second row: Elizabeth Woodard, Ada Mae Lewis, Sue Gibbs, Jane Robinson, Barbara Harris, Ann Hopkins, Mary Martin, Martha Chadwick, Shirley Springle, Miss Chadwick. Third row: Johnnie Olund, Andy Mason, Gerald Taylor, Barry Willis, Gary Copeland, Larry Moore, Bobby Davis, Billy Eudy, Jimmy Wheatley.

STUDENT COUNCIL OFFICERS

President - - - - -	JOHN LYNCH
Vice President - - - - -	GORDON DAVIS
Secretary - - - - -	INEZ WOODARD
Treasurer - - - - -	CATHERINE NOE



Paper Staff

First row: Nancy Russell, Connie Lewis. Second row: Margaret Bryant, Wilma Cummings, Evelyn Graham. Third row: Phyllis Pake, Corrinne Scurlock, Jimmy Wheatley, Elizabeth Woodard, Joan Chipman. Fourth row: Grace Whitehurst, Edith Willis, Janice Murphy, Janice Keller, Patsy Becton. Fifth row: Virginia Hassell, Jean Taylor, Mary Martin, Mary Haynes, Bitsy Brooks, Beulah Eubanks, Patsy Daniels. Sixth row: Ann Hopkins, Gerald Taylor, Andy Mason, Jane Robinson, Gordan Davis, Bruce Edwards, Ted Spivey.

Editor-in-Chief - - - - - CONNIE LEWIS
Business Manager - - - - - NANCY RUSSELL



Beta Club

Best of luck always.
Thanks for being in our
Banquet. You were cute!
Always - Jean
Taylor

First row: Ann Hopkins, Gary Copeland, Mrs. Floyd, Connie Lewis, Catherine Noe.
Second row: Ted Spivey, Johnnie Olund, Billy Eudy, Lela Fodrie, Corrinne Scurlock,
Wilma Cummings, Margaret Bryant, Joyce Norris, Edith Lewis. Third row: Bobby Willis,
Ann Noe, Bertha Davis, Shirley Pat Springle, Martha Pake, Patsy Becton, Elizabeth Wood-
ard, Beulah Eubanks, Phyllis Piner, Mary Lily Haynes, Faye Merrill. Fourth row: Andy
Mason, Elizabeth House, Bitsy Brooks, Barbara Goodwin, Joan Chipman, Edith Ann Wil-
lis, Louis Woodard, Bobby Smith, Jean Taylor, John Lynch. Fifth row: Edward Powell,
Sheila Smith, Faye Taylor, Gene Lewis, Mary Martin, Dorothea Gillikin, Donald Tay-
lor, Bobbie Jean Herring, Edwin Becton, Frank Gillikin, Gordon Davis, Nancy Russell,
Jean Dixon.

President	-----	-GARY COPELAND
Vice President	-----	- CATHERINE NOE
Secretary	-----	- CONNIE LEWIS
Treasurer	-----	- ANN HOPKINS



Tri - Hi - Y

First row: Shirley Springle, Jean Dixon, Ann Noe, Phyllis Piner, Elizabeth House. Second row: Mary Lily Haynes, Mary Lou Owen, Patsy Hardesty, Molly Hopkins, Vickie Taylor, Evelyn Graham, Minnie Pake, Bitsy Brooks, Anita Copeland, Connie Lewis. Third row: Miss Duncan, Catherine Noe, Bertha Davis, Nancy Russell, Ellen Norcom, Marie Webb, Barbara Goodwin, Faye Merrill, Carol Jones, Sue Gibbs.

TRI-HI-Y OFFICERS

President - - - - -	SHIRLEY SPRINGLE
Vice President - - - - -	JEAN DIXON
Secretary - - - - -	ANN NOE
Treasurer - - - - -	PHYLLIS PINER
Critic - - - - -	ELIZABETH HOUSE



4-H Club

First row: Sadie Harris, Phyllis Pake, Kathryn Willis, Emma Perry, Inez Smith, Dorothy Wilson, Janet Gillikin. Second row: Joyce Norris, Nellie Cannon, Jean Taylor, Anita Copeland, Dorothea Gillikin, Patricia Daniels, Jessie Pearl Wilkins, Verna Carraway, Shirley Taylor. Third row: Wallace Garner, Gerald Taylor, Tommy Gooding, Harry Taylor, James Taylor.



F.H.A.

First row: Phyllis Pake, Mary Lou Owen, Billie Jean Lewis, Nancy Whitehurst, Cynthia Skarren. Second row: Ruth Whitehurst, Virginia Hassell, Janet Gillikin, Doris Temple, Joyce Norris. Third row: Dorothy Wilson, Mary Robinson, Jane Robinson, Sadie Harris, Geneva Hardesty, Frances Fulcher, Faye Basden, Mrs. Beveridge, Edith Lewis, Julia Congleton. Fourth row: Jessie Dixon, Evelyn Graham, Etta Taylor, Ada Mae Lewis, Darlene Matthews. Fifth row: Dottie Pake, Mary Ann Chadwick, Sarah Goodwin, Helen Lee, Kaye Willis. Sixth row: Charlene Harrell, Doris Avery, Jeanne Jenkins, Virginia Davis, Bobbie Jean Herring. Seventh row: Barbara Piner, Sue Gibbs, Patricia Willis, Mary Buttry, Loretta Taylor. Eighth row: Vonda Emory, Colleen Guthrie, Jessie Wilkins, Hilda Styron, Swanna Darling, Bobbie Dennis, Barbara Harris.

President - - - - -	JANE ROBINSON
Vice President - - - - -	-SADIE HARRIS
Secretary - - - - -	MARY HUNNINGS
Treasurer - - - - -	FAYE MASON
Reporter - - - - -	FRANCES JANE FULCHER
Historian - - - - -	-MARIE ROBINSON
Parliamentarian - - - - -	EDITH LEWIS
Song Leader - - - - -	NANCY WHITEHURST



*Jimmy I hope you have a
happy future and the best
of luck*

Duck

Band

*Jimmy you are a very
good friend to have in
High School.*

A Classmate

Dottie Pake

First row: Mr. D. G. Browder, Cynthia Skarren, Ellen Norcom, Sterling Chadwick, Patricia Herring, Connie Lewis, Molly Hopkins, Marie Webb. Second row: Harman Bennett, Johnise Hardesty, Murray Pittman, Bitsy Brooks, Alex Copeland, Virginia Hassell, Stephen Dudley, Jane Robinson, Ann Owen, Kenneth Swain, Mary Lou Owen, Jimmy Owen, Charles Pake, Henry Safrit, Phyllis Pake, Jimmy Murphy. Third row: Iris Dudley, Virginia Davis, Ada Sue Owen, Annette Merrill, Anita Copeland, James Taylor, Andy Mason, Judy Mason, Charlene Harrell, Bobbie Dennis, Barbara Piner, Jerry Pake. Fourth row: Martha Pake, Dottie Pake, Catherine Noe, Ghermann Holland, Edwin Becton, Larry Moore, Bruce Congleton, Bobby Willis, Ted Spivey, Donald Fulcher, James Alligood, Jimmy Potter, Norvie Gillikin, Dorothy Searle, Winky Willis, Bobbie Russell, Billy Hudgins.

BAND OFFICERS

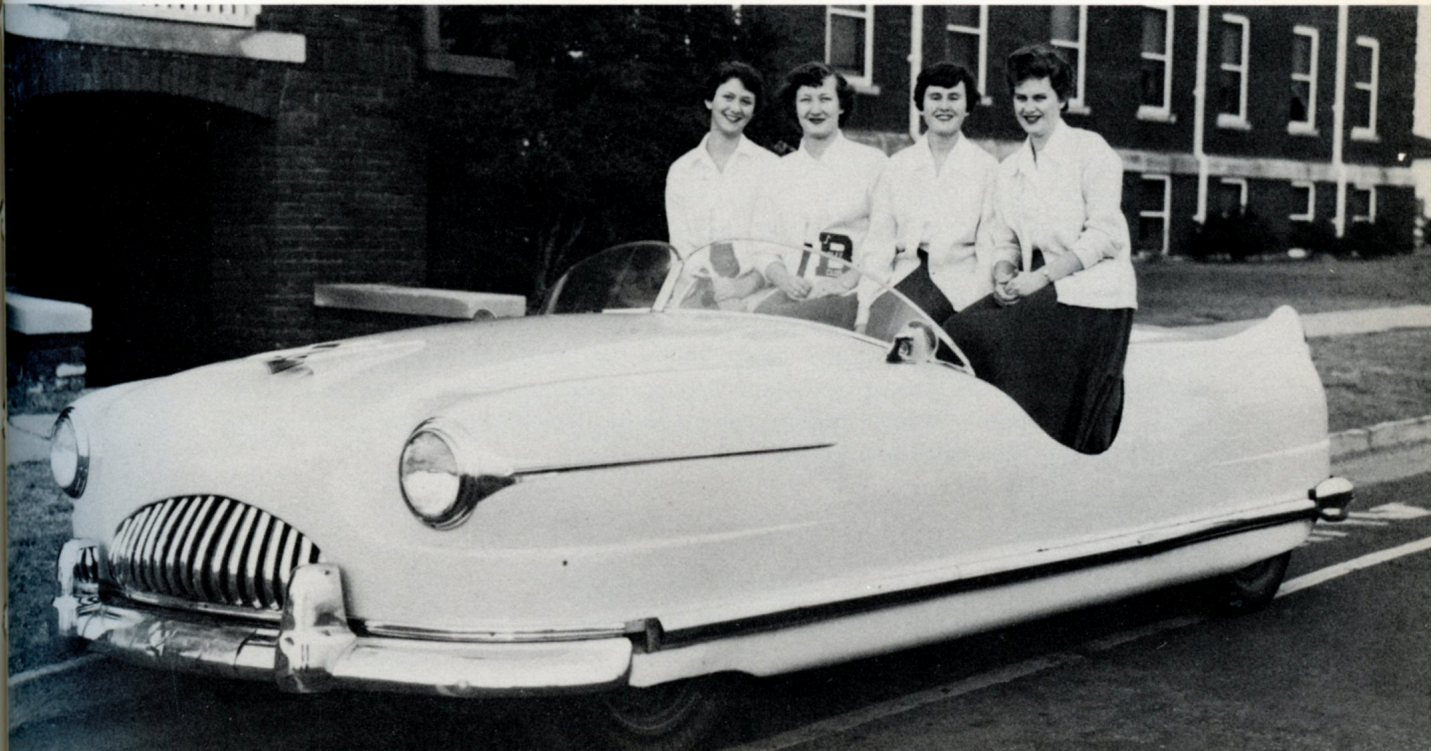
President - - - - -	BOBBY WILLIS
Vice President - - - - -	IRIS DUDLEY
Secretary - - - - -	MARY LOU OWEN
Treasurer - - - - -	BITSY BROOKS
Reporter - - - - -	VIRGINIA HASSELL
Librarian - - - - -	EDWIN BECTON

Majorettes



Left to right: Molly Hopkins, Connie Lewis, Marie Webb, Ellen Norcom , Cynthia Skarren.

Cheer Leaders



Left to right: Fay Merrell, Mary Lily Haynes, Patsy Hardesty, Ann Noe.



Varsity Club

First row: Mr. Evans, Jean Dixon, Nancy Russell, Mrs. Floyd, Elizabeth House, Carol Jones, Mr. McQuaid. Second row: Bobby Safrit, Jim Smith, Gene Lewis, John Lynch, Gary Copeland, Louis Woodard, Wallace Conner, Wallace Garner, Bobby Martin, Billy Eudy, Edward Powell, Jimmie Parkin, Johnny Olund. Not Shown: Mary Lily Haynes, Patsy Hardesty, and Edith Ann Willis.

VARSITY CLUB OFFICERS

President - - - - -	JIMMIE PARKIN
Vice President - - - - -	EDWARD POWELL
Secretary - - - - -	JEAN DIXON
Treasurer - - - - -	NANCY RUSSELL



Glee Club

Nancy Russell-(Accompanist) First row: Sheila Smith, Iris Dudley, Connie Lewis, Wilma Cummings, Mary Lou Owen, Janice Murphy, Janice Keller, Patricia Daniels, Dorothea Gillikin, Barbara Harris, Marie Webb, Mary Martin, Jane Mason, Faye Taylor, Sadie Harris, Frances Taylor, Corrinne Scurlock, Ruth Whitehurst, Nancy Whitehurst, Patsy Hardesty, Annie Louise Willis, Edith Lewis. Second row: Jane Robinson, Anita Copeland, Erlene Willis, Shirley Taylor, Joan Chipman, Frances Fulcher, Ann Noe, Sue Gibbs, Judy Mason, Elizabeth House, Mary Lily Haynes, Ann Norcom, Shirley Pat Springle, Bertha Davis, Virginia Hassell, Janet Gillikin, Julia Kelly, Molly Hopkins, Mr. Dale Browder. Third row: Jimmy Wheatley, Bobby Guthrie, Hugh Mason, Fred Merrill, Wayne Whitehurst, Archie Willis, Bobby Smith, Gerald Taylor, Billy Hudgins, Andrew Searle, Thomas Gooding, Ghermann Holland, John Lynch, Jimmy Parkin, Malcolm Sabistan, Edwin Becton, Bobby Davis, Gerald Gaskill, Johnnie O'lund.

GLEE CLUB OFFICERS

President - - - - -	NANCY RUSSELL
Vice President - - - - -	JIMMY PARKINS
Secretary - - - - -	CORRINNE SCURLOCK
Treasurer - - - - -	JANICE MURPHY
Reporter - - - - -	JOHN LYNCH
Librarians - - - - -	BOBBY GUTHRIE
	JANE ROBINSON



Bus Drivers

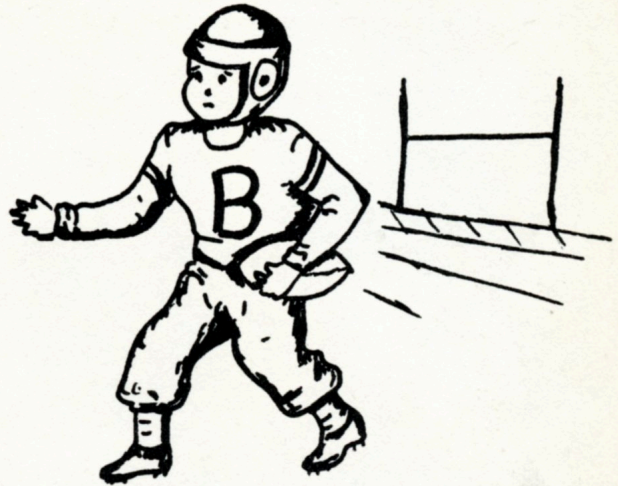
Left to right: Wallace Garner, Bobby Willis, James Taylor, Gary Gopeland, Andy Mason, Faye Taylor, Fred Merrill, Johnny Olund, Wallace Conner, Harry Taylor, Thomas Gooding, Jackson Edwards.

In Appreciation

To Mr. Jerry Schumacher, whose efforts have made these photographs possible, we, the annual staff of Beaufort High, '51-'52, unanimously voice our appreciation.



S
P



O

R

T



S



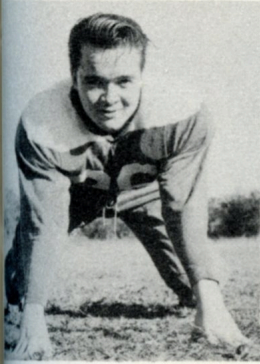
Football

First row: Pierson Willis, Jimmy Parkin, Wallace Conner, B.G. O'Neil, John Lynch, Gary Copeland, Billy Eudy, Gordon Davis, Lewis Woodard, Jim Smith. Second row: Johnny Betts (Manager), Gus Farlow, Herbie Prytherch, Ronnie Oucley, Johnny O'Lund, Edward Powell, Harold Willis, Henry Safrit, Larry Moore, Bobby Davis, Johnny Miller (water-boy), Third row: William Bryan Longest, (Ass't. Manager), Gene Lewis, Wallace Garner, Walker Moore, Bobby Safrit, Andy Mason, Gerhmann, Donald Taylor, Coach John Evans.

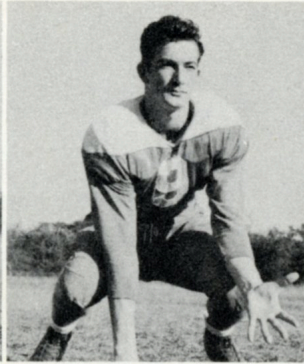
*Jim, I don't know you too well,
but what I know is all right,
I want you to keep up the "Jimmie"
reputation, and be a girl-chaser.
Best of luck
Jimmie*

Beaufort	62	Vanceboro	0	Beaufort	32	Swansboro	7
Beaufort	7	Camp Lejeune	7	Beaufort	0	Manteo	0
Beaufort	25	Beaulaville	7	Beaufort	19	Warsaw	6
Beaufort	0	Hertford	7	Beaufort	19	Ayden	6
Beaufort	21	Morehead	0	Beaufort	6	Elizabeth City	29
		Beaufort	6	Morehead City	0		

Lettermen



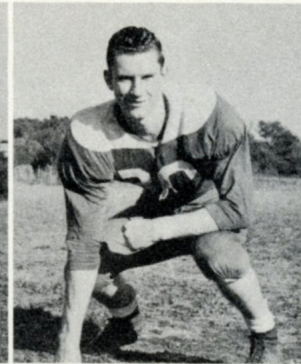
EDWARD POWELL
Guard



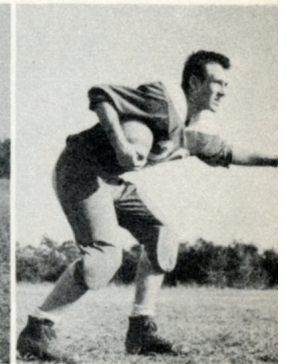
JOHN LYNCH-Capt.
Fullback



JOHN EVANS
Coach



GARY COPELAND-Capt.
Tackle



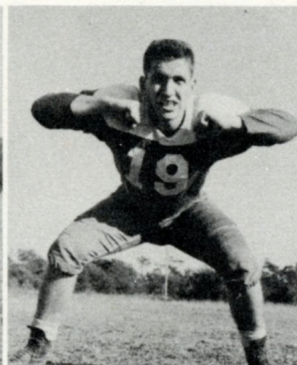
JIMMIE PARKIN
Half-back



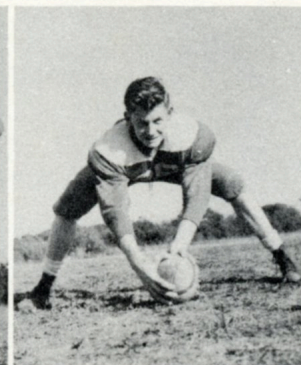
BOBBY SAFRIT
Tackle



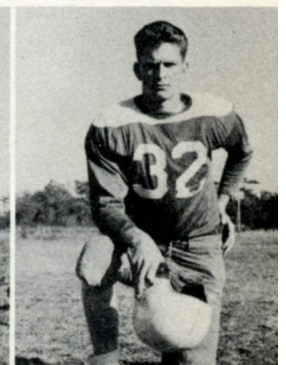
WALLACE GARNER
Half-back



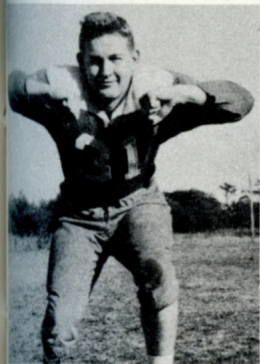
JIM SMITH
Tackle



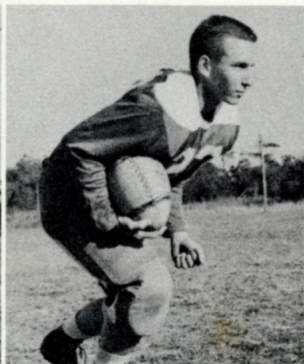
PIERSON WILLIS
Center



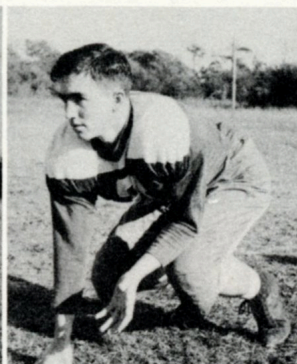
GENE LEWIS
Guard



WALLACE CONNER
Quarter-back



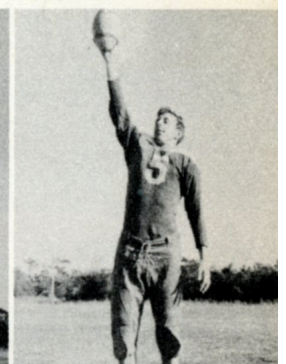
JOHNNY OLUND
Half-back



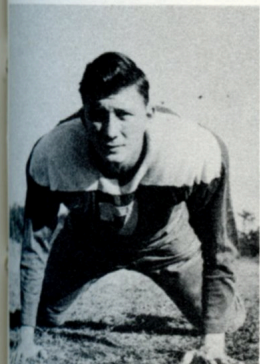
BILLY EUDY
Half-back



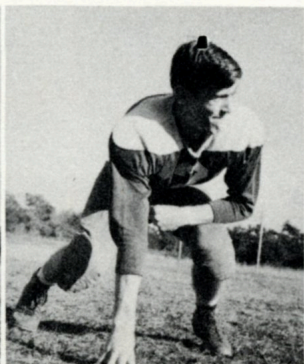
LEWIS WOODARD
Half-back



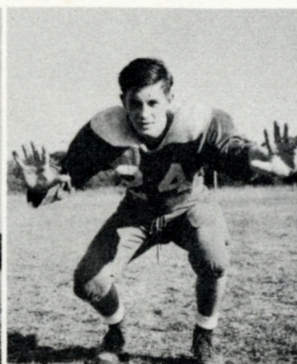
GUS FARLOW
End



RONNIE QUIDLEY
Guard



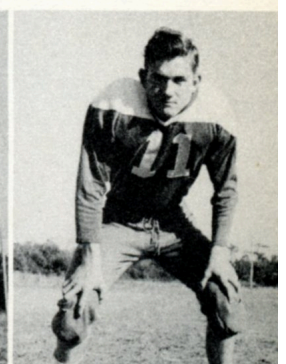
GORDON DAVIS
Guard



B.G. O'NEIL
End



LARRY MOORE
End



DONALD TAYLOR
Half-back

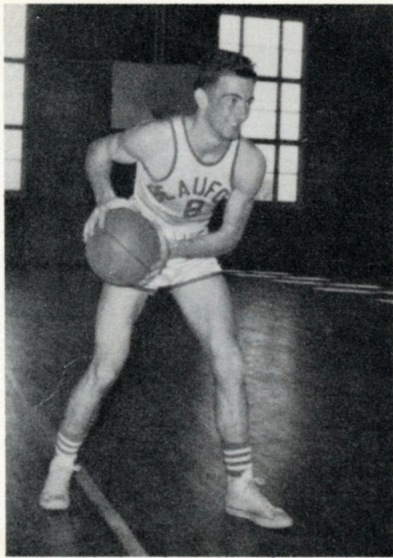
Good Luck Wheat



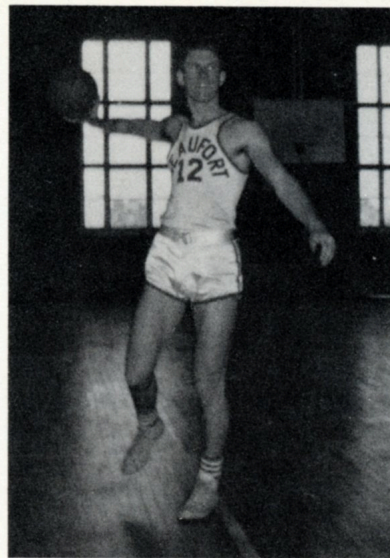
*Jimmy
all I can say
is "my best wishes"
Ben.*

Boys' Basketball

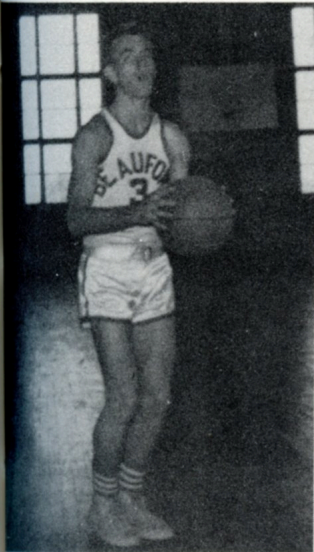
Front row: B. G. O'Neal, Jimmie Parkin, John Lynch, Captain; Gary Copeland, Pierson Willis. Back row: Johnny Betts, Manager; Frank Gillikin, Gehrmann Holland, Bobbie Martin, Jimmie Modlin, Mr. T. H. McQuaid, Coach.



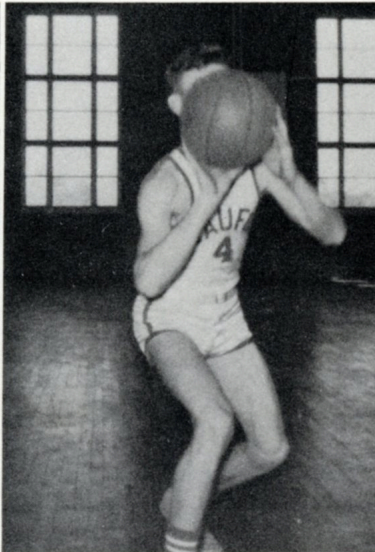
JOHN LYNCH, Captain, G



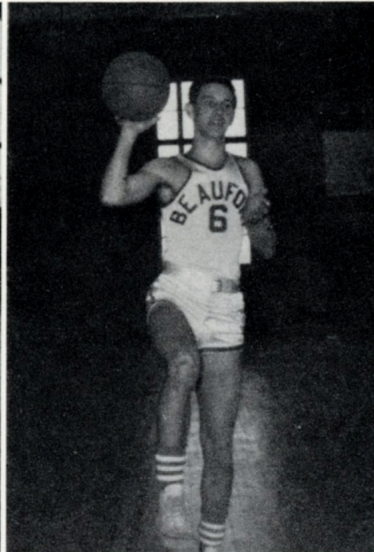
GARY COPELAND, G



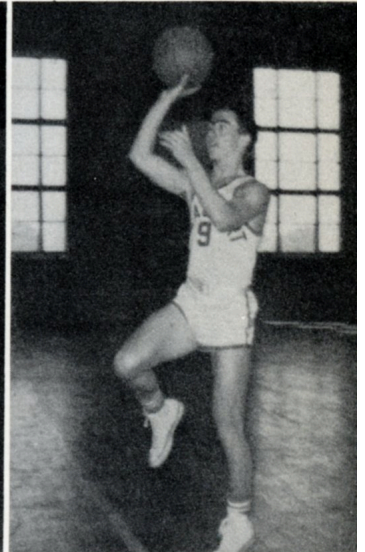
JIMMY PARKIN, G



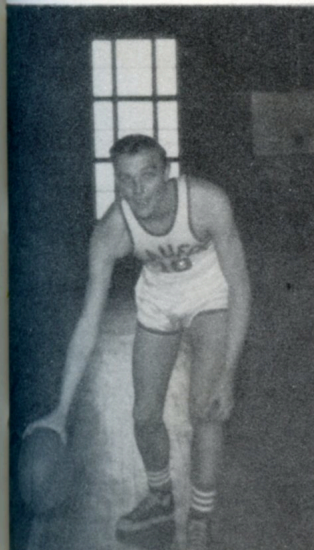
PIERSON WILLIS, F



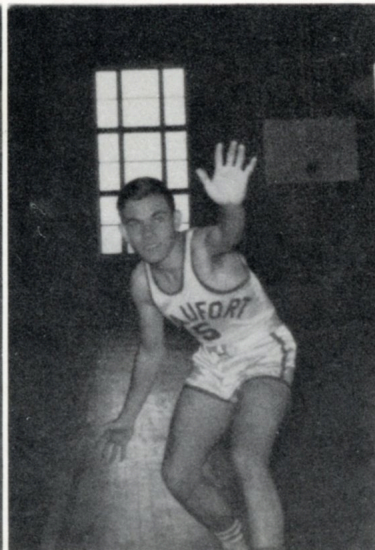
B.G. O'NEAL, F



BILLY EUDY, F



JIMMY MODLIN, C

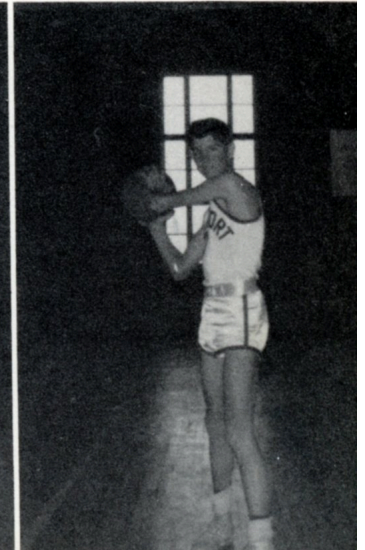


FRANK GILLIKIN, F



*Germain Holland
captain
team
Beaufort
1934-35*

GERMAIN HOLLAND, G



HERBERT MASON, F



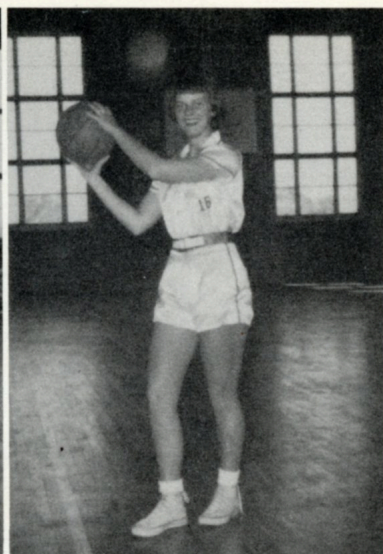
Girls' Basketball

Front row: Nancy Russell, Co-Captain; Elizabeth House. Second row: Colleen Guthrie, Leona Davis, Minnie Pake, Mary Low Owen, Phyllis Piner, Jackie Dickinson, Peggy Dixon. Back row: Mrs. Dan Floyd, Coach; Kay Lewis, Vickie Taylor, Ann Owens, Emma Perry, Bitsy Brooks, Carol Jones, Edith Ann Willis, Manager. (Not shown) Jean Dixon, Co-Captain.





JEAN DIXON, Co-Captain, G



ELIZABETH HOUSE, G



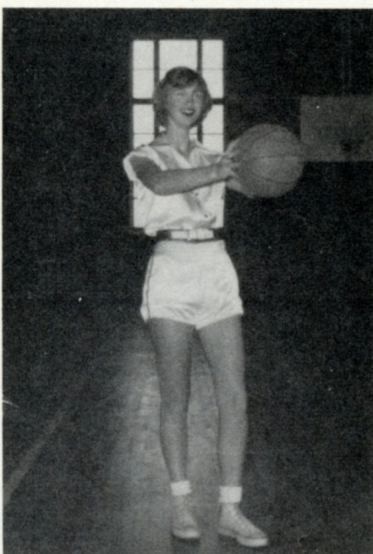
MINNIE PAKE, G



MARY LOU OWEN, G



NANCY RUSSELL, Co-Captain, F



JACKIE DICKINSON, F



CAROL JONES, F



COLLEEN GUTHRIE, F



PHYLLIS PINER, F



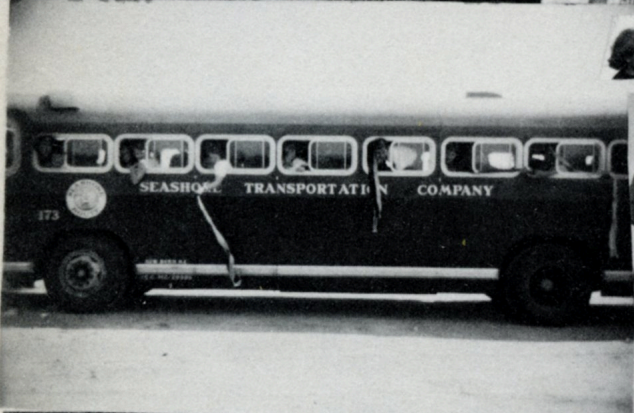
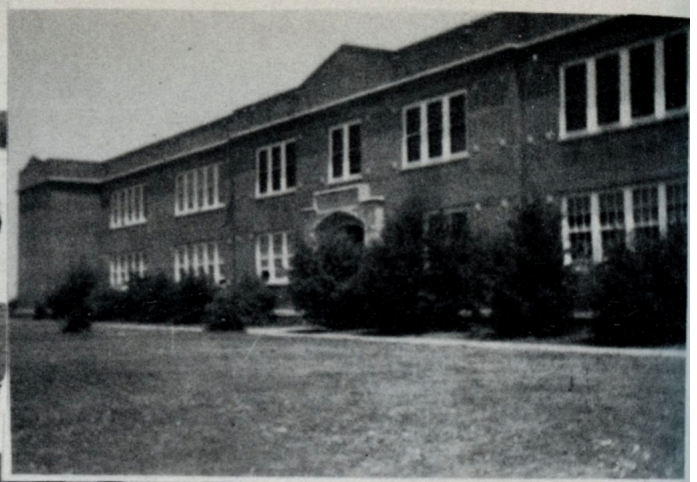
PEGGY DIXON, F



BITSY BROOKS, G



LEONA DAVIS, G



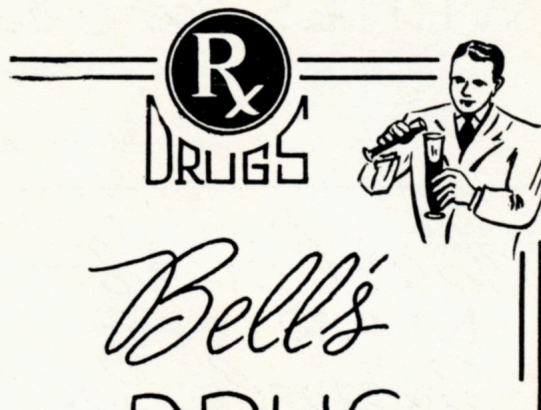
First Citizens BANK & TRUST Co.

ESTABLISHED 1898



Beaufort North Carolina

Complete Banking Service
Member Federal Deposit
Insurance Corporation



Bell's DRUG STORE

"Appreciates Your Patronage"

Day Phone
2-323-1

Night Phone
2-397-1

Congratulations
to
Seniors of '52



Beta CLUB

LOFTIN Motor Co.

SALES



SERVICE

"Your Friendly Ford Dealer"

Phone 2-3711
Beaufort, N. C.



WHITE'S Ice Cream & Milk CO.

Milk Cream Buttermilk Hostess Ice Cream

Phone 6-3014 Morehead City, N. C.

Barbour's
MARINE
Supply Co.
Marine Engines Outboard Motors

Nordberg Johnson

Phone 2-3311

CITY
Appliance
AND
Furniture Co.
Electrical Appliances

Phone 2-325-1

Beaufort, N. C.

B. A. Bell

Your Jeweler Since 1910

Diamonds - Watches - Jewelry - Silver - China - Crystal

Phone 2-445-1

Beaufort, N. C.

L. & L. COAL CO. INC.

Coal delivered to all parts of the country!

Compliments of
E. W. Downum

Department Store

Ready To Wear And Dry Goods

Phone 2-571-6 Beaufort, N. C.

Hamilton
FURNITURE
Co.

Phone 2-720-1

505 Live Oak Street

Beaufort, N. C.

Ramsey **GROCERY CO.**

Wholesale Groceries

Coco Cola Fountain Syrup Fountain Supplies

You Can See What's Cooking
From 8 A. M. - 12 P. M.

THE At
Griddle

Hooper's
ESSO STA.

Gas - Oil - Lubrication
Washing - Polishing - Greasing

Front & Turner Sts.
Beaufort, N. C.

Compliments of

Felton's



Compliments of

W. ROY WILLIS
Grocery

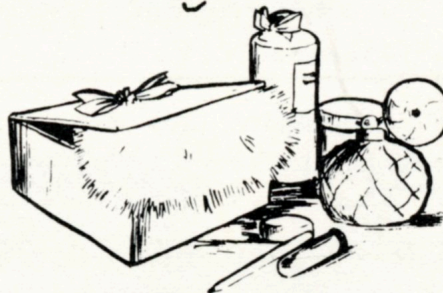
Highland Park

Beaufort, N. C.

C. G. Gaskill

Seeds - Feeds - Fertilizers

Beauty Bar
Phone 2-8206



Compliments of

Belk's
DEPT. STORE

"The Home of Better Values"

Morehead City, N. C.

Quality **cleaning**
Johnson-Saunders

DRY CLEANING CO.
"Wear Clean Clothes"
Dial 2-447-1
Beaufort, N. C.

Congratulations to the
SENIORS OF 1952
 MACHINE & SUPPLY CO. INC.

Potter's
STORE

Established 1904

Fancy Groceries - Tobacco - Cigars

Fruits & Vegetables of All Kinds
 Grade A Meat Market
 Beaufort, N. C.



BEAUFORT
Florist

Gifts & Flowers

For
 All Occasions.

Telephone 3371
 Beaufort, N. C.

Flowers
by Wire

Compliments of

Parker
MOTORS

Chrysler - Plymouth

R. B. Parker, Owner

Phone 6-3332
 Morehead City, N. C.

Compliments of

Pender's



Compliments of

PAUL Motor Co.



Home owned and operated
 by

C.M. Jones

**Western
 Auto
 Associate
 Store**

Potter's **DRESS SHOP**

Ladies' & Children's Ready To Wear

Dry Goods & Notions

Phone 2-571-1

Beaufort, N. C.

Eastman FURNITURE CO.

Carteret County's Oldest & Largest

Beaufort, N. C.

Morehead City, N. C.

COME
AND
GET IT!

Holden's
RESTAURANT

Turner St.
Beaufort, N. C.



Compliments of

Scarboro-Sarfit
LUMBER CO.

Located on the Lenoxville Road
Beaufort, N. C.

LAST MINUTE *News*

WMBL

740 On Your Dial

"Where Beaufort and
Morehead Link"

JOE
HOUSE
*Your
Favorite
Druggist*



Compliments

of

Bigg's
SHOE
SHOP



Compliments

Of

R.H.
Hill

Maola MILK & ICE CREAM CO.

Dial 6-3434

Branch Plant North 18th St., Morehead City, N. C.

Compliments
of

Clyde Jones
Gas Co., Inc.



Compliments
of

Lipman's
Department
Store

"Don't Cuss - Call Us"

Ann St.
ESSO STA.

Washing Greasing & Tire Repairing

Phone 2-537-1
Beaufort, N. C.

Russell's
GLASS Shop

"Everything In Glass"

Phone 6-3408 905 Shepard St.

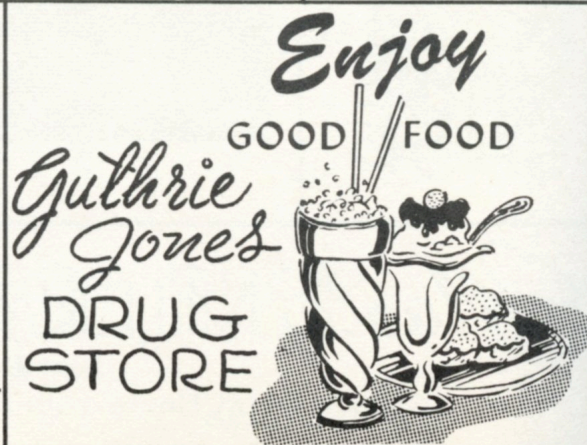
Compliments
of

Herring's
Beaufort, N. C.

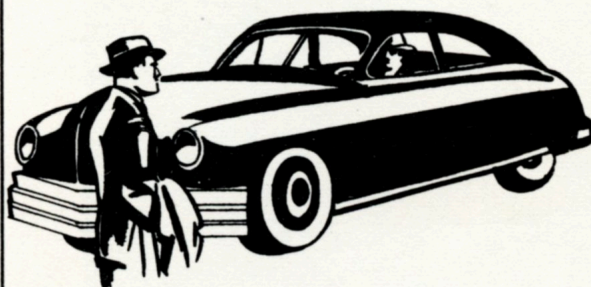


Compliments
of

Sarah's
Dress Shop



Real Car Values



Gordon Hardesty, Manager

Robert L. Rose
USED CAR LOT

"Robert L. Rose For

The Car That Goes"

Morehead City, N. C.

Meet Your Friends

At

THE
Spot

Best Hamburgers In
Town

Thick Milk Shakes
Soft Drinks - Sandwiches

Phone 2-4597

Beaufort
QUICK
FREEZING
CO., INC.

Packers and Distributors

Quick Frozen Sea Foods
And Farm Products

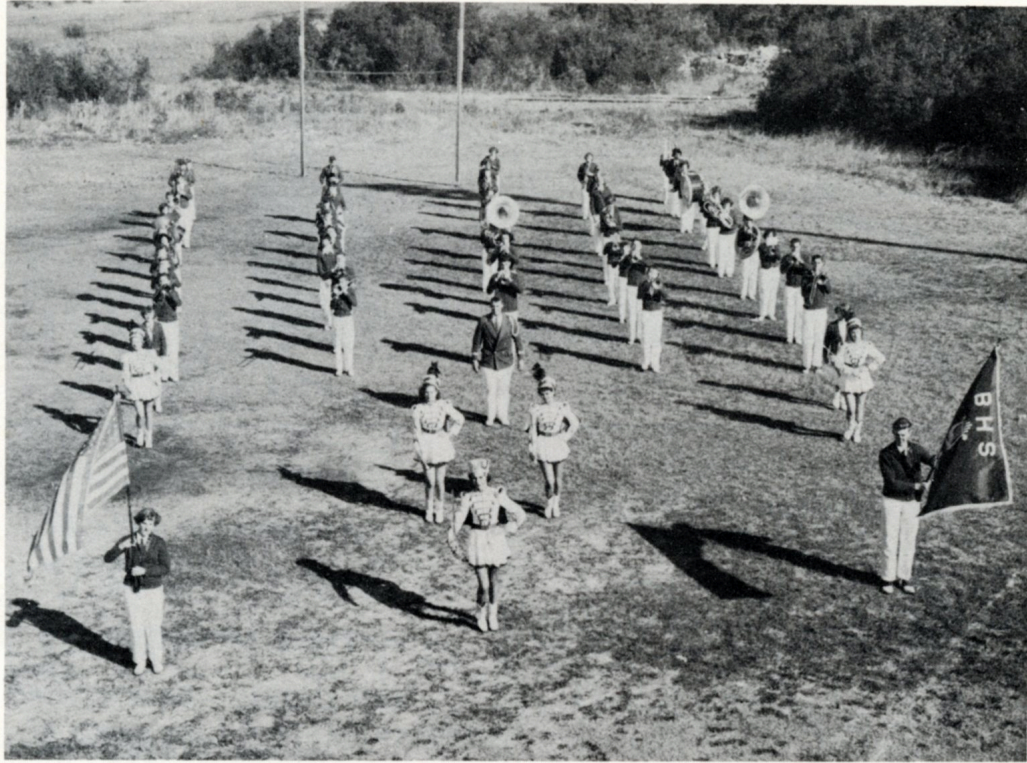
Beaufort, N. C.

C. D. Jones
COMPANY

Everything to Eat

Dial 314-1 or 315-1

Beaufort, N. C.



Compliments of
"Uncle" Harvey W. Smith
Fish Meal Company
Beaufort, N.C.



Compliments of

THE
Blue Ribbon
CLUB

Highway 70
Morehead City, N. C.

Callie's

BEAUTY SHOP

Craven Street

Beaufort, N. C.

AAA
STORAGE CO.

502 Live Oak Street

Beaufort, N. C.

S. A. Chalk Jr.

Mutual Insurance

"Savings For Preferred Risks"

First Citizen Bank

Morehead City, N. C.



Compliments of

Beaufort - Morehead
RAILROAD

"The Menhaden Line"

Dom's LUNCH

"The Little Place With
The Big Welcome"

Sandwiches of all Kinds

Morehead City, N. C.

Gulf SERVICE STATION



Automotive & Marine Service

Front and Turner Street
Beaufort, N. C.

Compliments of

F. H. A.



Compliments of

TRI
Hi-Y

Compliments

Royal
BAKING Co.

Bakers Of Bamby
Good Eating Day After Day

Good Luck To The Seniors Of '52.

City
GROCERY

PUT YOUR BEST FOOT
FORWARD

Trade at
G.W. Huntley's

Intersection of 101 and 70

Beaufort, N. C.



Congratulations

To The Seniors Of '52

*Student
Council*

Compliments of

Ivey Eubank's

Service Station and Garage

FOR GOOD FOOD



Try
CAPT.
BILL'S

Waterfront Cafe
Morehead City, N. C.



TO SUIT

YOUR

TASTE

Sanitary
RESTAURANT

Morehead City, N. C.

CITY
Bakery

Pies - Cakes - Pastries

Morehead City, N. C.

